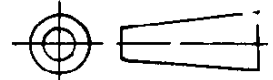


DO NOT SCALE

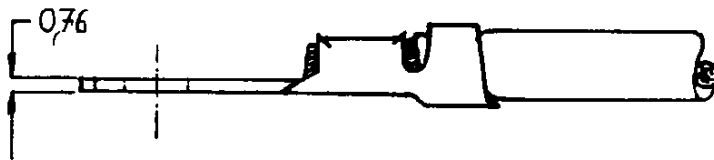
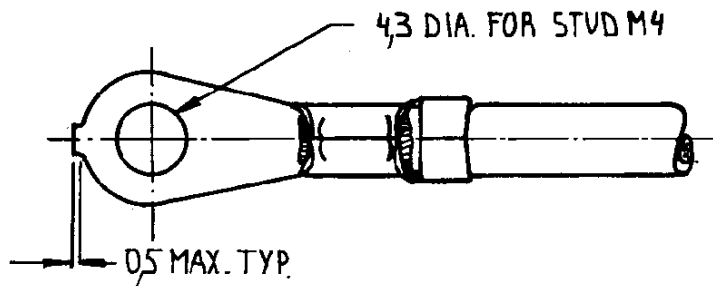
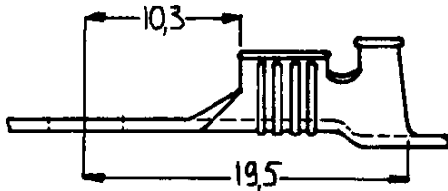
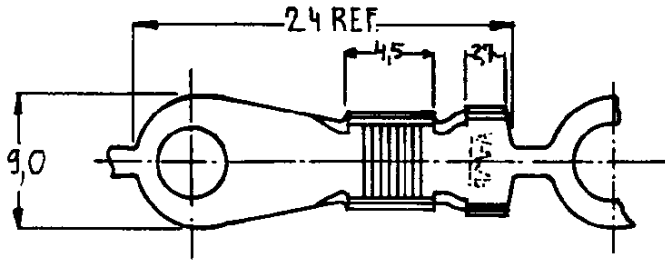
DIMENSIONS IN mm

METRIC

THIRD ANGLE PROJECTION



LTR.	REVISION RECORD	DR.	CHK.	DATE
C1	ECO-09-026346	KK	AEG	28NOV09



5 OBSOLETE PARTS: OBSOLETE CIS STREAMLINING PER D.RENAUD/D.SINISI

DOC. CENTRE
03 NOV. 1994

- NOTES: **1** FOR USE ON STANDARD AND MINIATURE APPLICATORS.
2 FOR USE ON MINIATURE APPLICATORS. (AMP-O-MATOR APPLICATION)
3 REELED WITH PAPER
4 REELED WITH PAPER AND PAPERCOVER

NOTES	FINISH	MATERIAL	PART NUMBER
5 OBSOLETE	1/3 UNPLATED	PHOSPHOR BRONZE	160163-5
5 OBSOLETE	1/3 UNPLATED	BRASS	160163-4
5 OBSOLETE	1 UNPLATED	PHOSPHOR BRONZE	160163-3
	1/2 TINPLATED	BRASS	160163-2
	1/4 UNPLATED	BRASS	160163-1

CUSTOMER DRAWING

AMP

AMP-HOLLAND B.V.
's-Hertogenbosch, The Netherlands

FOR REFERENCE ONLY
WILL NOT BE UPDATED

THIS DRAWING IS UNPUBLISHED

~~RELEASED FOR PUBLICATION~~

19

© COPYRIGHT 19 BY AMP-HOLLAND B.V.
ALL INTERNATIONAL RIGHTS RESERVED.
AMP PRODUCTS MAY BE COVERED BY U.S. AND FOREIGN PATENTS AND/OR PATENTS PENDING.

DR. *[Signature]* 21/4/83

WIRE RANGE
3,1 - 5,3 mm²

NAME

RINGTONGUE WITH INSULATION SUPPORT

REV. DATE
D M Y

CHK. *[Signature]* 28/4/83

INSUL. RANGE
3,8 - 5,3 DIA.

26 11 09

APP. *[Signature]* 28.4.83

SIZE
A4

SHEET
1 OF 1

DRAWING NO

C-160163

REV. LTR.
C1

RF