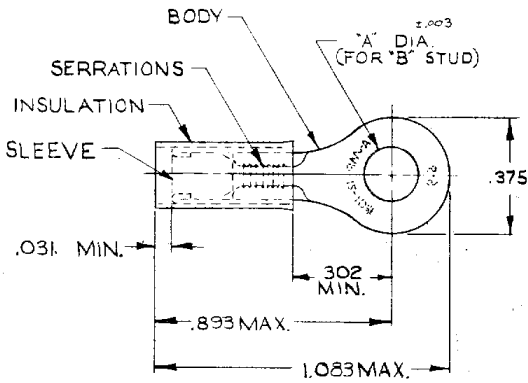


DRAWING MADE IN AMERICAN PROJECTION

4 3 2 1

REVISIONS				
ZONE	LTR	DESCRIPTION	DATE	APPROVED
	J2	REVISED PER ECO-11-005027	6APR11	HMR



FOR 102 TO 214 WIRE INSULATION DIA.
TONGUE MATERIAL THK. = .039 ±.002

TABLE I

WIRE TERMINAL	SEE TABLE II	BODY: COPPER (ASTM B152) NICKEL PLATE (QQ-N-290) .0003 AVG. EXT. THK.	
		SLEEVE: COPPER (ASTM B152) NICKEL PL (QQ-N-290). 00003 AVG. EXT. THK.	
		INSULATION: TEFLON (ASTM D3295) COLOR: BLACK	
QTY	DESCRIPTION	PART NO.	MATERIAL & FINISH
UNLESS OTHERWISE SPECIFIED DIMENSIONS ARE IN INCHES. TOLERANCES ON: DECIMALS: ±.008 ANGLES: ± 5°		CONTRACT NO. 4	STE TE Connectivity
MATERIAL		SEE TABLE I	NAME: WIRE TERMINAL PIDG - STRATO-THERM - RING TONGUE WIRE SIZE: 12-10
DR: [Signature] 7-29-69 CHK: [Signature] 7-30-69 APPD: [Signature] 8-6-69 REL: [Signature] 8-6-69 DSGN APPD: OTHER APPD:		SIZE	CODE IDENT NO. NUMBER B 00779 50845
		SCALE	NTS SHEET 1 OF 1

TABLE II

50845-2	.197	*10	50845-5	OBSOLETE
50845-1	.171	*8	50845-4	
50845	.145	*6	50845-3	
PART NO.	"A"	"B"	PART NO. ON TAPE	

4 3 2 1 CUSTOMER DRAWING