

4

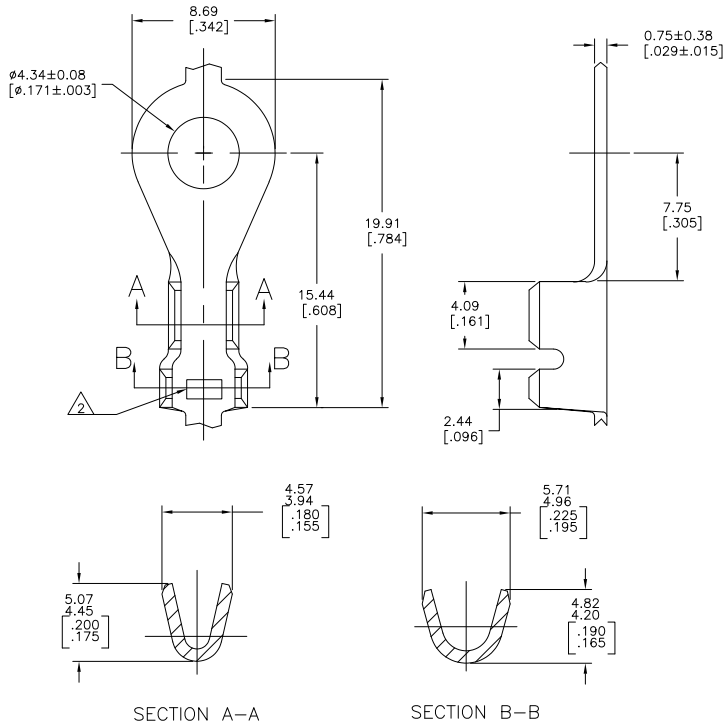
3

2

1

THIS DRAWING IS UNPUBLISHED. RELEASED FOR PUBLICATION. ALL RIGHTS RESERVED.

LOC	DIST	REVISIONS			
F	LNK	DESCRIPTION	DATE	BY	APPD
AF	50	AC1	REVISED PER ECO-11-004917	11MAR11	RK HMR



- 1 CONTINUOUS STRIP ON REELS.
- 2 AMP STAMP.
- 3 TIN PLATING
- 4 TIN PLATING OVER COPPER UNDERPLATE.
- 5 REDUCED PACKAGE QUANTITY.
- 6 PRELIMINARY - NOT FOR PRODUCTION.

SECTION A-A

SECTION B-B

5	3	0.8-2.0mm ² [18-14] AWG	2.54-3.56 [.100-.140] DIA	40724-2
	4			40724-1
	3	FINISH	INSULATION RANGE	40724

THIS DRAWING IS A CONTROLLED DOCUMENT.		DM MICHAEL S. FEHR 27EB2001	TE Connectivity	
DIMENSIONS: mm [INCHES]		CHK DONALD DECKER 04MR2001	M4 - #8 STUD, TERMINAL, TONGUE, RING	
TOLERANCES UNLESS OTHERWISE SPECIFIED:		APP DONALD DECKER 04MR2001	SIZE	00779C=40724
0 PLG ±	1 PLG ±	PRODUCT SPEC	WEIGHT	RESTRICTED TO
2 PLG ±	3 PLG ±	APPLICATION SPEC	SCALE	1:1
4 PLG ±	ANGLES ± °	FINISH	SHEET	1 of 1
MATERIAL 0R2 BRASS	SEE TABLE	CUSTOMER DRAWING	REV	AC1