

4

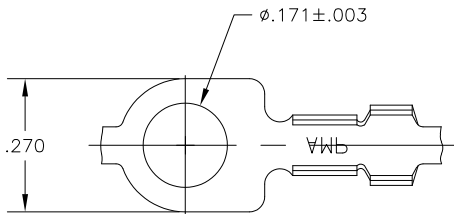
3

2

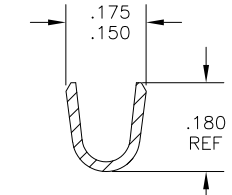
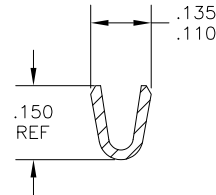
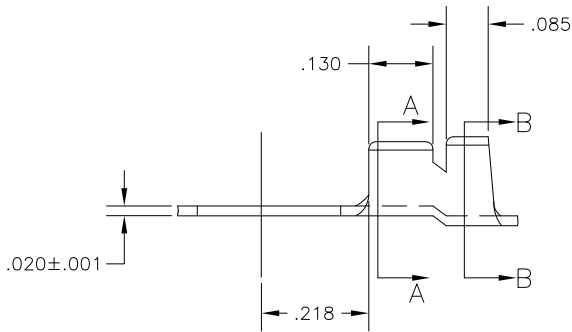
1

THIS DRAWING IS UNPUBLISHED. RELEASED FOR PUBLICATION
 © COPYRIGHT - BY TYCO ELECTRONICS CORPORATION. ALL RIGHTS RESERVED.

LOC		DIST		REVISIONS			
P	LTR	DESCRIPTION		DATE	DWN	APVD	
	B	REVISED PER ECR-10-006099		07JUL10	HMR	PD	



1. CONTINUOUS STRIP ON REELS
2. WIRE SIZE IS #20-#16 AWG
3. INSULATION RANGE IS .075-.120 DIA



SECTION A-A

SECTION B-B

40888

PART NO

THIS DRAWING IS A CONTROLLED DOCUMENT.		DWN jr_ruth 10MAR06	Tyco Electronics Corporation Harrisburg, PA 17105-3608																								
DIMENSIONS: INCHES		CHK D DECKER 10MAR06	NAME																								
TOLERANCES UNLESS OTHERWISE SPECIFIED:		APVD D DECKER 10MAR06	PRODUCT SPEC																								
<table border="1"> <tr><td>0</td><td>PLC</td><td>±</td><td>-</td></tr> <tr><td>1</td><td>PLC</td><td>±</td><td>-</td></tr> <tr><td>2</td><td>PLC</td><td>±</td><td>-</td></tr> <tr><td>3</td><td>PLC</td><td>±</td><td>.010</td></tr> <tr><td>4</td><td>PLC</td><td>±</td><td>-</td></tr> <tr><td colspan="2">ANGLES</td><td>±</td><td>5°</td></tr> </table>		0	PLC	±	-	1	PLC	±	-	2	PLC	±	-	3	PLC	±	.010	4	PLC	±	-	ANGLES		±	5°	APPLICATION SPEC	
0	PLC	±	-																								
1	PLC	±	-																								
2	PLC	±	-																								
3	PLC	±	.010																								
4	PLC	±	-																								
ANGLES		±	5°																								
MATERIAL 082 BRASS	FINISH TIN	WEIGHT	SIZE A3	CAGE CODE 00779																							
		DRAWING NO C-40888	RESTRICTED TO																								
CUSTOMER DRAWING		SCALE 5:1	SHEET 1 OF 1	REV B																							