

4

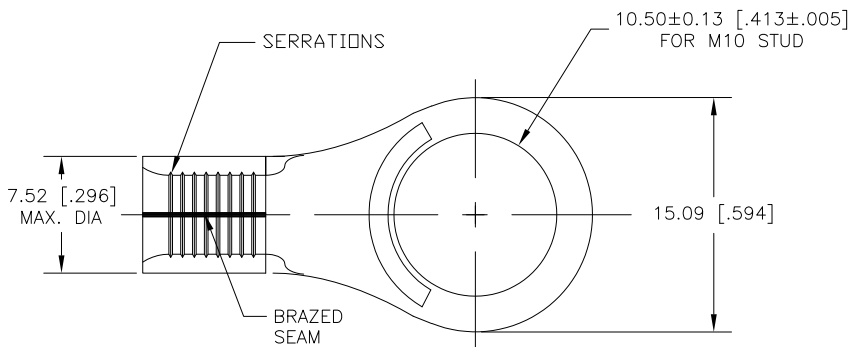
3

2

1

THIS DRAWING IS UNPUBLISHED. RELEASED FOR PUBLICATION
 © COPYRIGHT - BY TYCO ELECTRONICS CORPORATION. ALL INTERNATIONAL RIGHTS RESERVED.

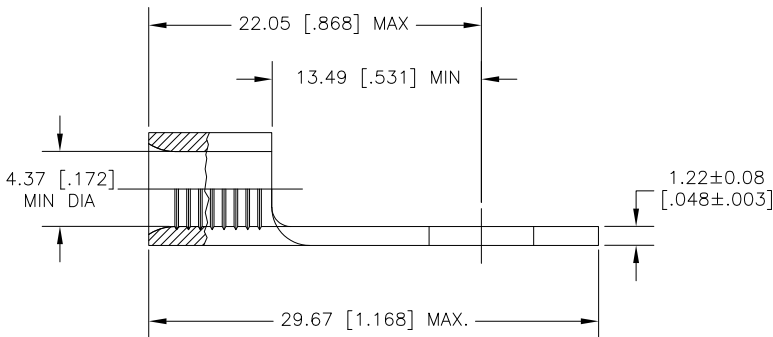
| LOC | DIST | REVISIONS | | | |
|-----|------|-------------|-----------------------|---------|----------|
| P | LTR | DESCRIPTION | DATE | DWN | APVD |
| G | 86 | B | REV PER ECR 09-017276 | 03AUG09 | JR TM |



AMP
WIRE RANGE

8 AWG
SOLID OR STRANDED

- 1 STAMP "AMP 8*", APPROX AS SHOWN
- 2 MATERIAL: COPPER PER ASTN B-152 ANNEALED
- 3 FINISH: TIN PLATE 0.00254 [.000100] MIN THK PER ASTM B-545



| | | |
|-----|-------------|----------|
| 500 | LOOSE PIECE | 160056 |
| QTY | PART NO. | PART NO. |

| | | | | | | | | | | | | | | | | | | | | | | | | | |
|--|--|---|---|--|--------------------------|---|--------------------|-------|------------------------|---------------|---|-----|-----|---|-----|---------------|---|-----|-----|--------|--|-----|--------------------------------|----------------------------------|--|
| CUSTOMER SERVICE SYSTEMS | | MAX RECOMMENDED OPERATING TEMPERATURE: 170°C MAX | THIS DRAWING IS A CONTROLLED DOCUMENT. | | DWN JR RUTH 10MAR06 | Tyco Electronics Corporation Harrisburg, PA 17105-3608 | | | | | | | | | | | | | | | | | | | |
| FOR ADDITIONAL PRODUCT INFORMATION OR COPIES OF DRAWINGS AND TECHNICAL DOCUMENTS | PRODUCT INFORMATION CENTER 1-800-522-6752 | VOLTAGE RATING: N/A | DIMENSIONS: INCHES [INCHES] | TOLERANCES UNLESS OTHERWISE SPECIFIED: | CHK JEFF RUTH 10MAR06 | NAME T. MICHIELUTTI | | | | | | | | | | | | | | | | | | | |
| FOR APPLICATION | TOOLING ASSISTANCE CENTER 1-800-722-1111 | CIRCULAR MIL AREA: 6.64-10.5mm² [13,100-20,800] SOLID OR STRANDED | <table border="1"> <tr><td>0</td><td>PLC</td><td>± -</td></tr> <tr><td>1</td><td>PLC</td><td>± -</td></tr> <tr><td>2</td><td>PLC</td><td>± -</td></tr> <tr><td>3</td><td>PLC</td><td>± 0.20 [.008]</td></tr> <tr><td>4</td><td>PLC</td><td>± -</td></tr> <tr><td>ANGLES</td><td></td><td>± -</td></tr> </table> | | 0 | PLC | ± - | 1 | PLC | ± - | 2 | PLC | ± - | 3 | PLC | ± 0.20 [.008] | 4 | PLC | ± - | ANGLES | | ± - | APVD T. MICHIELUTTI 10MAR06 | PRODUCT SPEC APPLICATION SPEC | |
| 0 | PLC | ± - | | | | | | | | | | | | | | | | | | | | | | | |
| 1 | PLC | ± - | | | | | | | | | | | | | | | | | | | | | | | |
| 2 | PLC | ± - | | | | | | | | | | | | | | | | | | | | | | | |
| 3 | PLC | ± 0.20 [.008] | | | | | | | | | | | | | | | | | | | | | | | |
| 4 | PLC | ± - | | | | | | | | | | | | | | | | | | | | | | | |
| ANGLES | | ± - | | | | | | | | | | | | | | | | | | | | | | | |
| TOOLING INFORMATION | | | MATERIAL | FINISH | WEIGHT | SIZE A3 | CAGE CODE 00779 | | | | | | | | | | | | | | | | | | |
| FOR ORDER ENTRY | 1-800-526-5142 | THIS DRAWING IS A CONTROLLED DOCUMENT FOR AMP INCORPORATED. IT IS SUBJECT TO CHANGE AND THE CONTROLLING ENGINEERING ORGANIZATION SHOULD BE CONTACTED FOR THE LATEST REVISION. | <table border="1"> <tr> <td>MATERIAL</td> <td>FINISH</td> </tr> <tr> <td>- [2]</td> <td>- [3]</td> </tr> </table> | | MATERIAL | FINISH | - [2] | - [3] | DRAWING NO C-160056 | RESTRICTED TO | | | | | | | | | | | | | | | |
| MATERIAL | FINISH | | | | | | | | | | | | | | | | | | | | | | | | |
| - [2] | - [3] | | | | | | | | | | | | | | | | | | | | | | | | |
| CUSTOMER DRAWING | | | | | SCALE 4:1 | SHEET 1 OF 1 | REV B | | | | | | | | | | | | | | | | | | |

1470-19 (1/08)