

4

3

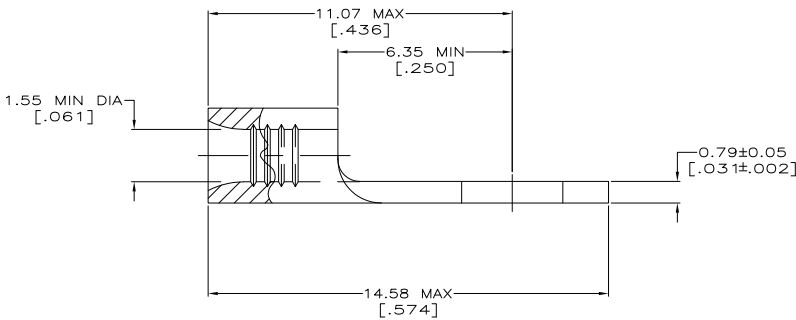
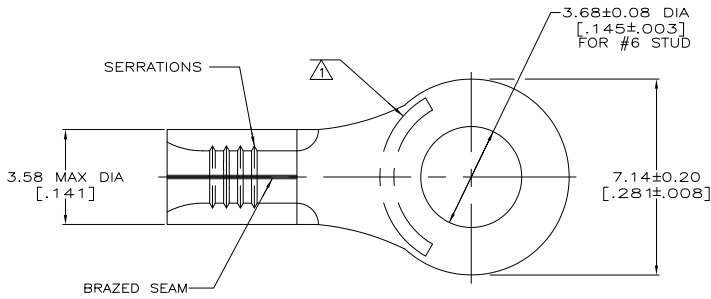
2

1

THIS DRAWING IS UNPUBLISHED. RELEASED FOR PUBLICATION. ALL RIGHTS RESERVED.

LOC	DIST	REVISIONS			
P	LR	DESCRIPTION	DATE	BY	APPD
G	14	E2	REVISED PER ECO-11-004820	11MAR11	RK HMR

<b>AMP</b> WIRE RANGE	Listed FILE E13288
22-16 AWG SOLID OR STRANDED	22-18 AWG SOLID OR STRANDED
<b>LR7189</b> Certified	MILITARY P/N AND CLASS
22-16 AWG SOLID OR STRANDED	N/A



- 1 STAMP AMP 22-18\* APPROX AS SHOWN 22-16 TERMINALS ARE STAMPED 22-18 IN ACCORDANCE WITH MILITARY SPEC MIL-T-7928 COMMERCIAL WIRE RANGE IS 22-16
- 2 0.00254 [.000100] MIN TIN PER ASTM B-545
- 3 GOLD PLATE 0.00127 [.000050] MIN THK PER MIL-G-45204 OVER NICKEL PLATE 0.00076 [.000030] MIN THK PER QQ-N-290
- 4 CLEANED, UNPLATED
- 5 COPPER PER ASTM B-152, ANNEALED

100	LOOSE PIECE, BOX	2	8-34107-1
5000	ON TAPE	2	2-34107-2
-	LOOSE PIECE	4	34107-2
-	LOOSE PIECE	3	34107-1
-	LOOSE PIECE	2	34107
QTY	PACKAGE TYPE	FINISH	PART NO.

CUSTOMER SERVICE SYSTEMS		MAX RECOMMENDED OPERATING TEMPERATURE: 170°C
FOR ADDITIONAL PRODUCT INFORMATION OR COPIES OF DRAWINGS AND TECHNICAL DOCUMENTS	PRODUCT INFORMATION CENTER 1-800-522-6752	VOLTAGE RATING: N/A
FOR APPLICATION	TOOLING ASSISTANCE CENTER	CIRCULAR MIL AREA: 0.26-1.65mm <sup>2</sup> [509-3260] SOLID OR STRANDED
TOOLING INFORMATION	1-800-722-1111	
FOR ORDER ENTRY	1-800-526-5142	THIS DRAWING IS A CONTROLLED DOCUMENT FOR AMP INCORPORATED. ANY CHANGES TO THIS DRAWING MUST BE APPROVED BY THE CONTROLLING ENGINEERING ORGANIZATION. SHOULD BE CONTACTED FOR THE LATEST REVISION.

THIS DRAWING IS A CONTROLLED DOCUMENT.		DR: TA BRINKMAN 3-10-93	TE Connectivity	
DIMENSIONS: MM [ INCHES ]		CR: DA PATTERSON 2-10-93	TERMINAL, RING TONGUE, SOLISTRAND	
OTHER DIMENSIONS: PLC 1 - - PLC 2 - - PLC 3 - - PLC 4 - - ANGLES - -		APR: JIL MECKLEY 3-10-93	SIZE CASE CODE DRAWING NO. RESTRICTED TO	
MATERIAL: - 5		FINISH: SEE TABLE	A2 00779 C=34107	
			CUSTOMER DRAWING SCALE: 10:1 SHEET: 1 of 1 REV: E2	

1471-9 (3/11)

34107

A