

4

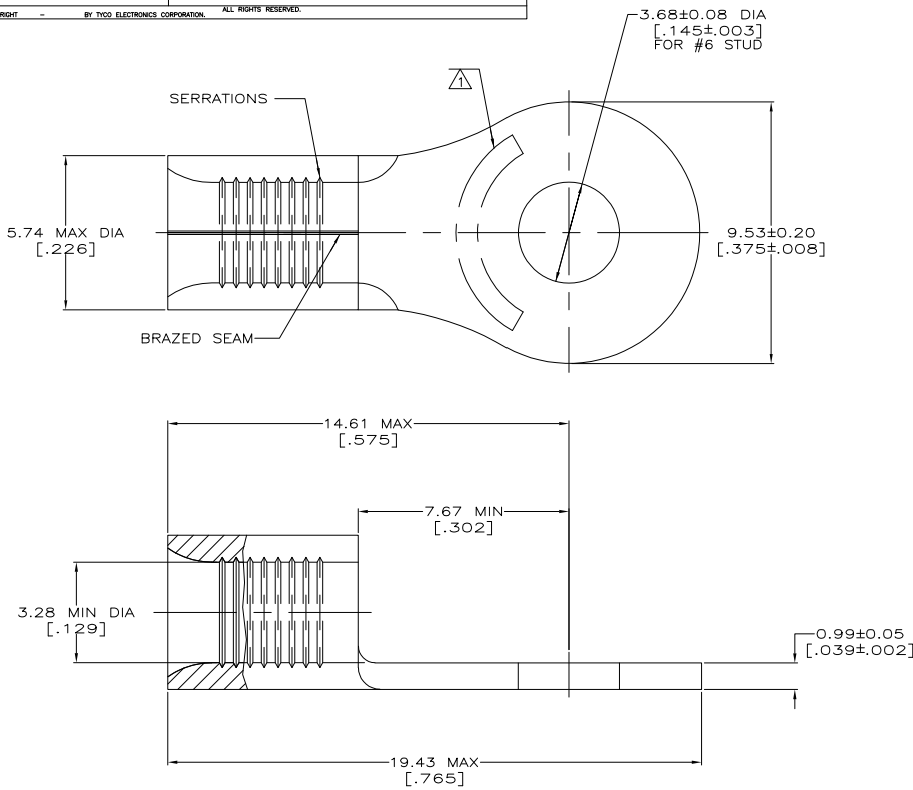
3

2

1

THIS DRAWING IS UNPUBLISHED. RELEASED FOR PUBLICATION
 © COPYRIGHT BY TYCO ELECTRONICS CORPORATION. ALL RIGHTS RESERVED.

| LOC | | DIST | | REVISIONS | | | |
|-----|-----|-------------|-----------------------|-----------|------|----|--|
| P | LTR | DESCRIPTION | DATE | MIN | APVD | | |
| G | 14 | D1 | REV PER EDR 06-027811 | 30NOV06 | JR | TM | |



| | | |
|--------------------------------|-----------------------|--------------------------------|
| AMP WIRE RANGE | Listed FILE E13288 | LR7189 Certified |
| 12-10 AWG SOLID OR STRANDED | 12-10 AWG STRANDED | 12-10 AWG SOLID OR STRANDED |

- 1 STAMP AMP 12-10* APPROX AS SHOWN
- 2 TIN PLATE 0.00254 [.000100] MIN THK PER ASTM B-545
- 3 CLEANED, UNPLATED.
- 4 GOLD PLATE 0.00127 [.000050] MIN THK PER MIL-G-45204 OVER NICKEL PLATE 0.00076 [.000030] MIN THK PER QQ-N-290.
- 5 TIN/LEAD (93.7) PLATE PER ASTM-B545 (3% MIN LEAD CONTENT).
- 6 COPPER PER ASTM B-152, ANNEALED
- 7 PRELIMINARY - NOT FOR PRODUCTION

| QTY | FINISH | PACKAGING TYPE | PART NO. |
|------|--------|----------------|-----------|
| 500 | 1 | LOOSE PIECE | 33456-5 |
| 500 | 1 | LOOSE PIECE | 33456-4 |
| 2500 | 1 | ON TAPE | 2-33456-1 |
| 500 | 1 | LOOSE PIECE | 33456-1 |
| 500 | 1 | LOOSE PIECE | 33456 |

| | | |
|--|--|---|
| AMP INCORPORATED CUSTOMER SERVICE SYSTEMS | | MAX RECOMMENDED OPERATING TEMPERATURE: 170°C |
| FOR ADDITIONAL PRODUCT INFORMATION OR COPIES OF DRAWINGS AND TECHNICAL DOCUMENTS | PRODUCT INFORMATION CENTER 1-800-522-6752 | VOLTAGE RATING: N/A |
| FOR APPLICATION | TOOLING ASSISTANCE CENTER 1-800-722-1111 | CIRCULAR MIL AREA: 2.62-6.64mm² [5,180-13,100] SOLID OR STRANDED |
| FOR ORDER ENTRY | 1-800-526-5142 | THIS DRAWING IS A CONTROLLED DOCUMENT FOR AMP INCORPORATED. IT IS SUBJECT TO CHANGE AND THE CONTROLLING ENGINEERING ORGANIZATION SHOULD BE CONTACTED FOR THE LATEST REVISION. |

| | | | | |
|--|--|--------------------------|---|---------------------|
| THIS DRAWING IS A CONTROLLED DOCUMENT. | | DR: TA BRINKMAN 3-17-93 | Tyco Electronics Corporation Harrisburg, PA 17105-3608 | |
| DIMENSIONS: INCHES | | CR: DA PATTERSON 2-17-93 | DA PATTERSON | |
| OTHER FINISHES: 0 PLC # - 1 PLC # - 2 PLC # - 3 PLC # - 4 PLC # - ANGLES # - | | APP: JL MECKLEY 3-17-93 | NAME | |
| MATERIAL | | APPLICATION SPEC | SIZE | QTY CODE DRAWING NO |
| FINISH | | HEIGHT | A2 | 00779 C=33456 |
| SEE NOTES | | RESTRICTED TO | CUSTOMER DRAWING | |
| | | SCALE | 10:1 | SHEET 1 of 1 REV D1 |

AMP 1471-9 REV 31MM2000

33456

A

D

C

B

A

1

2

3

4

5

6

7

8

9

10

11

12

13

14

15

16

17

18

19

20