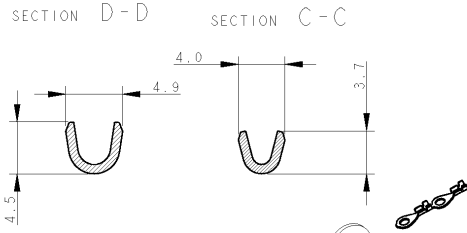
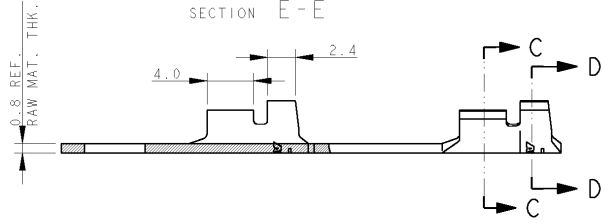
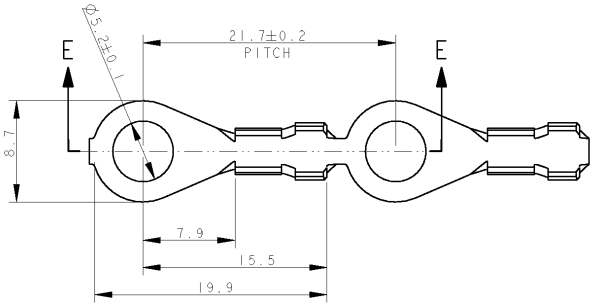


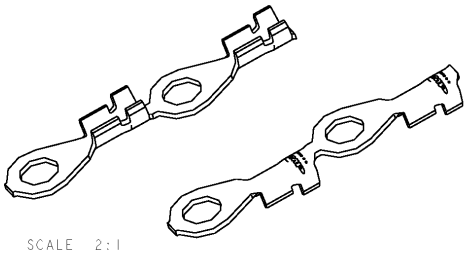
THIS DRAWING IS UNPUBLISHED. RELEASED FOR PUBLICATION 2003  
 © COPYRIGHT 2003 BY TYCO ELECTRONICS CORPORATION. ALL RIGHTS RESERVED.

LOC	DIST	REVISIONS			
P	LTR	DESCRIPTION	DATE	DWN	APVD
H		REDRAWN	12DEC2007	HY	GT
HI		UPDATED	20DEC2007	HY	GT



- 1) DIRECTION OFF TOP OF REEL
- 2) REELED ON 12" DIA CARTON REEL Q.TY 5000 PC.s  
Q.TY / BOX 15000 PC.s
- 3) WIRE RANGE 20-16 AWG  
INSULATION RANGE 2.5-3.5 MM DIA.

	PLAIN	BRASS	0-140525-0	H
NOTE	FINISH	MATERIAL	TE P/N	REV



SCALE 2:1

<small>THIS DRAWING IS A CONTROLLED DOCUMENT FOR TYCO ELECTRONICS CORPORATION                  IT IS SUBJECT TO CHANGE AND THE CONTROLLING ENGINEERING ORGANIZATION                  SHOULD BE CONTACTED FOR THE LATEST REVISION.</small>		DWN 12DEC2007 CHK H. YAALI H. YAALI APVD G. TURCO NAME PRODUCT SPEC APPLICATION SPEC WEIGHT CUSTOMER DRAWING	tyco Electronics AMP Italia S.p.A. C.so F.lli Cervi, 15 COLLEGNO (TO)
DIMENSIONS: mm 	TOLERANCES UNLESS OTHERWISE SPECIFIED: 0 PLC ± 1 PLC ±0.4 2 PLC ± 3 PLC ± 4 PLC ± ANGLES ±	SIZE A3 CAGE CODE 00779 DRAWING NO C-140525	RESTRICTED TO SCALE 3:1 SHEET 1 OF 1 REV HI
MATERIAL	FINISH	RING TONGUE	
SEE TABLE	SEE TABLE		

AMP 1470-19 REV 31MAR2000

PRO/ENGINEER DRAWING