

4

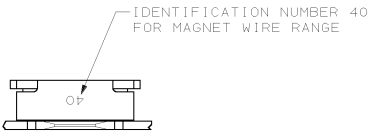
3

2

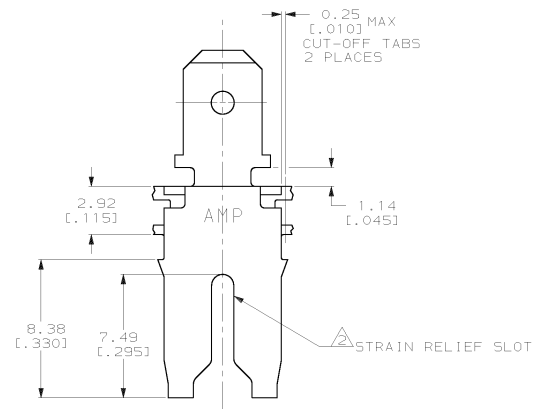
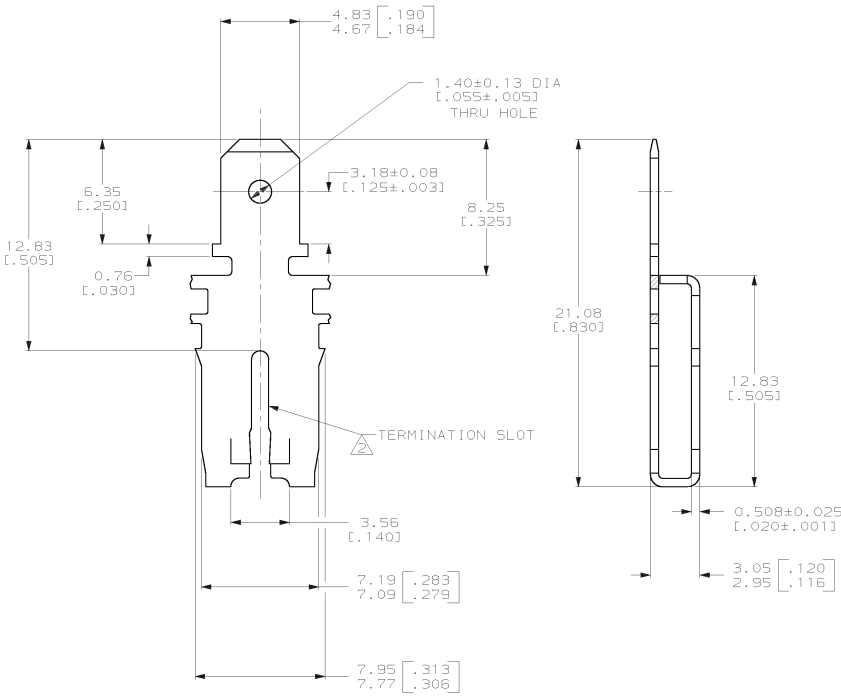
1

THIS DRAWING IS UNPUBLISHED.
 © COPYRIGHT 19 BY AMP INCORPORATED. ALL RIGHTS RESERVED.

REV. NO.		REVISIONS		DATE	BY	APP'D
AF	50	F	LTR			
		A	REV PER	0110-0368-97	8/29/97	JR NN



- 1 CONTINUOUS STRIP ON REELS WITH TERMINALS LOCATED ON 8.38±0.08 [1.330±.003] CENTERS.
- 2 SLOT TERMINATES EITHER A SINGLE OR DOUBLE MAGNET WIRE OF THE SAME SIZE AND TYPE. COPPER RANGE: 1.29-1.45mm [#16-#15] AWG.
- 3 AFTER INSERTION INTO PLASTIC HOLDER, TAB PORTION MUST BE BENT OVER 45° TO 90° OR POTTED-IN TO PREVENT PULL-OUT WHEN MATING RECEPTACLE IS DISCONNECTED.



63996-1
PART NUMBER

PROPOSED DESIGN
NOT RELEASED FOR
PRODUCTION

THIS DRAWING IS A CONTROLLED DOCUMENT.		DWG: MICHAEL S. FEJERS 12/20/97		AMP		AMP Incorporated Harrisburg, PA 17105-3608	
DIMENSIONS: mm (INCHES)		CHK: RICHARD GRZYBOWSKI 10/22/97		APP: JAMES R. NEFF 10/22/97		TAB, 4.75 [1.87] FASTON™ MAG-MATE™	
TOLERANCES UNLESS SPECIFIED:		MFG: 108-2053		MFG: 114-2066		NOT THE LATEST REVISION	
DIMENSIONS UNLESS SPECIFIED:		PLC: ±.25 (.010)		PLC: ±.14 (.005)		A2 00779 C-63996	
MATERIAL: 4M BRASS		FINISH: 0.002032 [0.00080]		MFG TIN PER MIL-T-10727		CUSTOMER DRAWING	
MATERIAL: 4M BRASS		FINISH: 0.002032 [0.00080]		MFG TIN PER MIL-T-10727		SHEET 6 OF 1	

63996

A

A