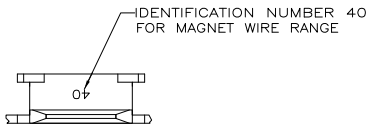
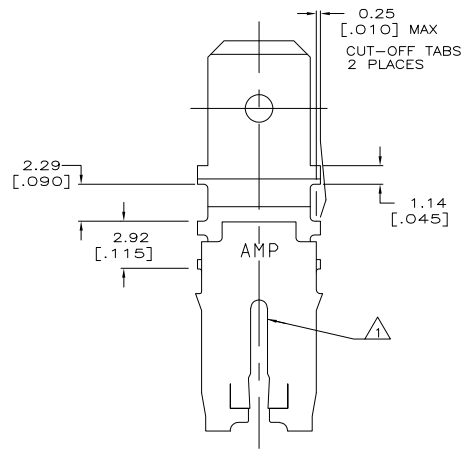
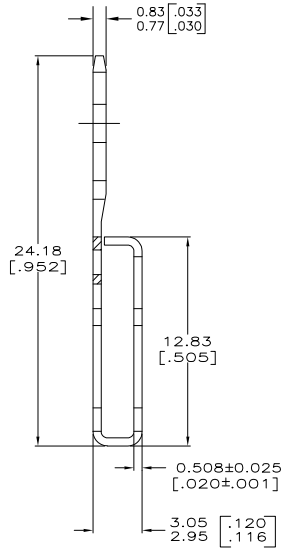
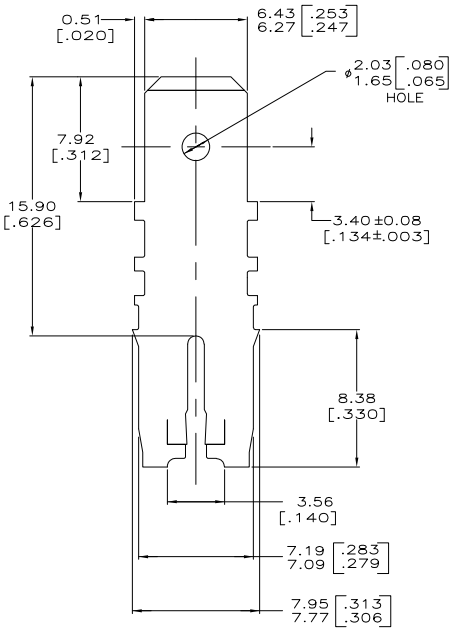


THE DRAWING IS UNPUBLISHED. RELEASED FOR PUBLICATION  
 © COPYRIGHT BY TYCO ELECTRONICS CORPORATION. ALL RIGHTS RESERVED.

LOC	QST	REVISIONS				
AF	50	TR	LR	DATE	DRN	APP
		C		REVISED PER ECR-06-010515	28AUG06	HMR KR



- 1 SLOT ACCEPTS EITHER A SINGLE OR DOUBLE MAGNET WIRE OF THE SAME SIZE AND TYPE. COPPER RANGE: 1.29-1.45mm [#16-#15] AWG
- 2 AFTER INSERTION INTO PLASTIC HOLDER MAG-MATE MUST BE POTTED-IN TO PREVENT PULL-OUT WHEN MATING RECEPTACLE IS DISCONNECTED.



63881-1  
 PART NO

THIS DRAWING IS A CONTROLLED DOCUMENT.		DRN R.GRZYBOWSKI	18/05/93	Tyco Electronics Corporation Harrisburg, PA 17105-3608
DIMENSIONS: mm [INCHES]		DRN M.S.FEHER	18/05/93	
TOLERANCES UNLESS OTHERWISE SPECIFIED:		APPRO N.S.NEUF	18/05/93	TAB, LOOSE PIECE, 6.35 [.250] FASTON, MAG-MATE™
		PRODUCT SPEC 108-2053		SIZE A2
MATERIAL 4M PRE-MILLED BRASS		APPLICATION SPEC 114-2066	WEIGHT -	CAGE CODE 00779
FINISH 0.002032 [.000080] MIN TIN PER MIL-1-17/27		CUSTOMER DRAWING	SCALE 6:1	DRAWING NO 63881
				RESTRICTED TO -
				SHEET 1 of 1
				REV C

AMP 1471-B REV 31MMR2000

63881

A