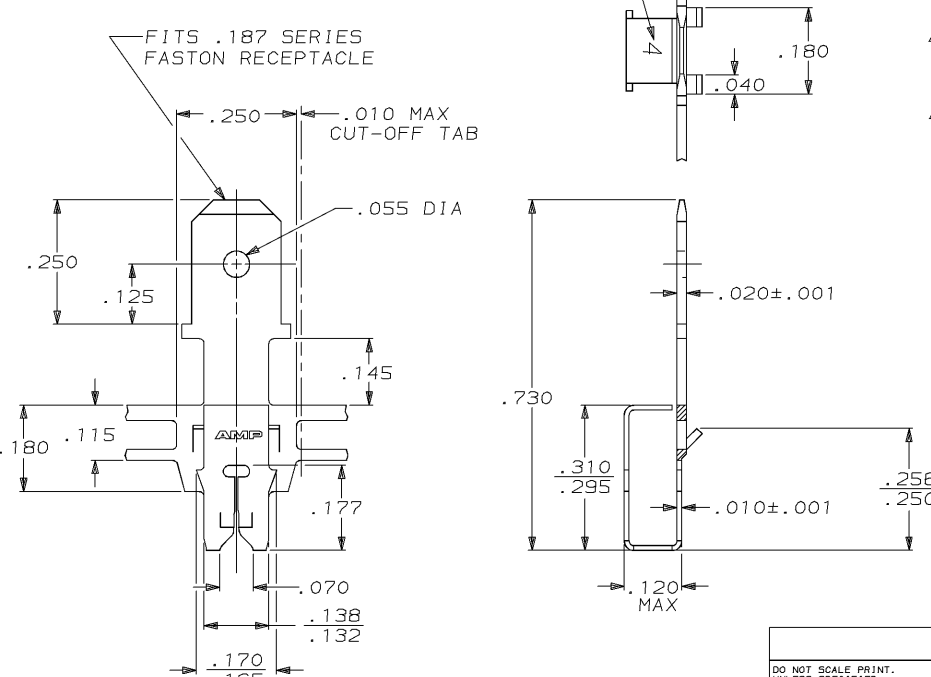


DRAWING MADE IN THIRD ANGLE PROJECTION

THIS DRAWING IS UNPUBLISHED. RELEASED FOR PUBLICATION, 19 .
 © COPYRIGHT 19 BY AMP INCORPORATED. ALL INTERNATIONAL RIGHTS RESERVED.

LOC	DIST	REVISIONS				DATE	APPD
P	F	ZONE	LTR	DESCRIPTION			
AF	50			E	REVISED PER 0710-0455-94	14/JAN/94	MF/NN

IDENTIFICATION NUMBER FOR MAGNET WIRE RANGE



- 1 MAG-MATE CAVITY SPECIFICATION.
- 2 CONTINUOUS STRIP ON REELS WITH TERMINALS LOCATED ON .330±.003 CENTERS.
- 3 SLOT TERMINATES EITHER SINGLE OR DOUBLE MAGNET WIRES OF THE SAME TYPE AND SIZE, COPPER RANGE IS #33-#31 AWG.

63505-1
PART NO

DO NOT SCALE PRINT. UNLESS SPECIFIED DIMENSIONS IN INCHES TOLERANCES ON: 2 PLC DEC ± .010 ANGLES ± -		DR 7/6/88 MS FEHER	AMP INCORPORATED Harrisburg, Pa. 17105
MATERIAL #4M HARD PRE-MILLED BRASS		CHK 7/12/88 JR RUTH	
FINISH .000080 MIN TIN		APPD 7/12/88 N NEFF	NAME TAB, 187 FASTON,™ MAG-MATE™
		APPD 7/12/88 C ATHERTON	SIZE B FSCM NO 00779 DRAWING NO 63505
		PRODUCT SPEC 108-2012	SCALE 5:1 SHEET 1 OF 1
		APPLICATION SPEC 114-2094	
		WEIGHT -	

AMP 1470-15 REV 3-87
 14-JAN-95 10:38:34 amp02644 /files/dept2127/dwg2127/u.mag-mate/u.300

CUSTOMER DRAWING