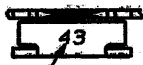


DRAWING MADE IN THIRD ANGLE PROJECTION

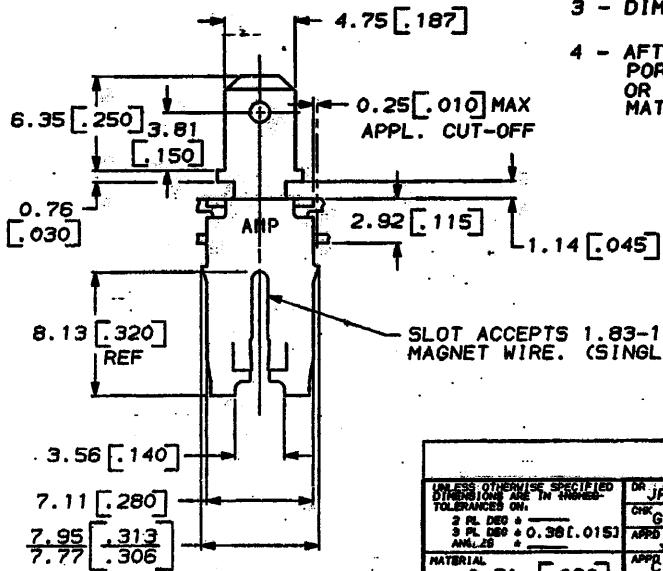
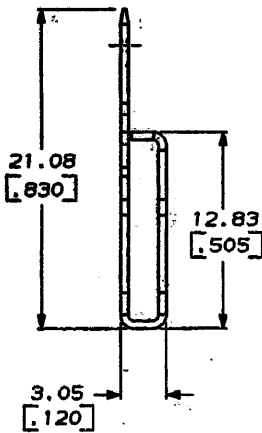
THIS DRAWING IS UNPUBLISHED. RELEASED FOR PUBLICATION, 19
 © COPYRIGHT IS BY AMP INCORPORATED, HARRISBURG, PA. ALL INTERNATIONAL RIGHTS
 RESERVED. AMP PRODUCTS MAY BE COVERED BY U.S. AND FOREIGN PATENTS AND/OR PATENTS PENDING.

LOC	DIST	ZONE	LTR	DESCRIPTION	DATE	APPROVED
AF	50			REACTIVATED PER AF-5811	8/12/88	NSF



IDENTIFICATION NO.
FOR MAGNET WIRE RANGE

- 1 - FOR MAG-MATE CAVITY SPECIFICATION REFER TO APPLICATION SPEC #114-2066.
- 2 - CONTINUOUS STRIP ON REELS WITH TERMINALS LOCATED ON 8.38 [0.330] CENTERS.
- 3 - DIMENSIONS IN BRACKETS ARE IN INCHES.
- 4 - AFTER INSERTION INTO PLASTIC HOLDER TAB PORTION MUST BE BENT OVER 45° TO 90° OR POTTED-IN TO PREVENT PULL-OUT WHEN MATING RECEPTACLE IS DISCONNECTED.



SLOT ACCEPTS 1.83-1.54^{DIA} [0.13-0.14.5] COPPER MAGNET WIRE. (SINGLE WIRE ONLY)

METRIC

UNLESS OTHERWISE SPECIFIED DIMENSIONS ARE IN INCHES TOLERANCES ON: 2 PL DEC + 3 PL DEC + 0.38 [0.015] ANL. 20		DR JR RUTH 2-12-88 CHK G YETTER 2-12-88 APPD J SWARTZ 2-12-88 APPR C. ATHERTON 2-12-88	AMP INCORPORATED Harrisburg, Pa. 17105	
MATERIAL 0.51 [0.020] BRASS	FINISH TIN	NAME MAG-MATE .187 FASTON TAB	SIZE B	FROM NO 00779
		APPLICATION SPEC	SCALE NTS	DRAWING NO 63428
				SHEET 1 OF 1

63428-1
PART NO

CUSTOMER DRAWING

AMP-1470-15 REV 10-84