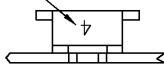


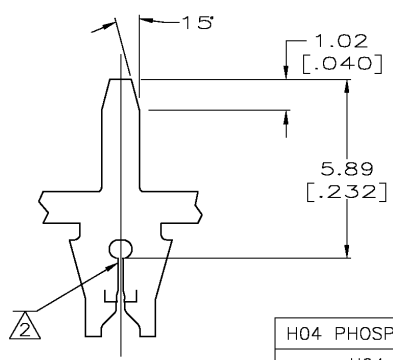
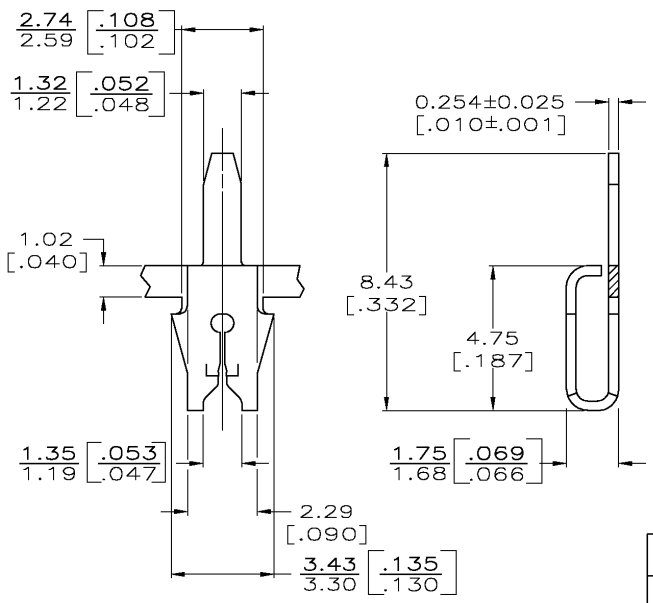
THIS DRAWING IS UNPUBLISHED. RELEASED FOR PUBLICATION
 © COPYRIGHT BY TYCO ELECTRONICS CORPORATION. ALL RIGHTS RESERVED.

LOC	DIST	REVISIONS				
AF	50	REV	DATE	BY	APPD	
		G	24JAN03	MF	KR	
		DESCRIPTION			DATE	BY
		REVISED PER 063A-0057-03			24JAN03	MF

IDENTIFICATION NUMBER 4 FOR MAGNET WIRE RANGE



- 1 CONTINUOUS STRIP ON REELS WITH TERMINALS LOCATED ON 5.08±0.08 [.200±.003] CENTERS.
- 2 SLOT ACCEPTS 0.18-0.23mm DIA [#33-#31]AWG COPPER MAGNET WIRE
- 3 0.002032[.000080] MIN TIN OVER 0.00127[.000050] MIN NICKEL
- 4 REELED FOR APPLICATION THROUGH MAG-MATE INSERTION MACHINE.
- 5 REELED FOR INSERTION INTO PRINTED CIRCUIT BOARD.
- 6 PRELIMINARY - NOT FOR PRODUCTION.



MATERIAL	REELING	PART NUMBER
H04 PHOSPHOR BRONZE	4	62938-3
H04 BRASS	5	62938-2
H04 BRASS	4	62938-1

THIS DRAWING IS A CONTROLLED DOCUMENT.		DWN MICHAEL S. FEHER 24JAN2003		Tyco Electronics Corporation	
DIMENSIONS: INCHES		CHK KURT A. RANDOLPH 24JAN2003		Harrisburg, PA 17105-3608	
TOLERANCES UNLESS OTHERWISE SPECIFIED:		APVD KURT A. RANDOLPH 24JAN2003		NAME	
0 PLC ±-		PRODUCT SPEC		TERMINAL, POSTED, 187 SERIES MAG-MATE™	
1 PLC ±-		APPLICATION SPEC		-	
2 PLC ±0.25 [.010]		SIZE		A3	
3 PLC ±-		CAGE CODE		00779	
4 PLC ±-		DRAWING NO		62938	
4 PLC ANGLE ±-		WEIGHT		-	
MATERIAL SEE TABLE		FINISH		- 3	
		CUSTOMER DRAWING		SCALE 8:1 SHEET 1 OF 1 REV G	