

4

3

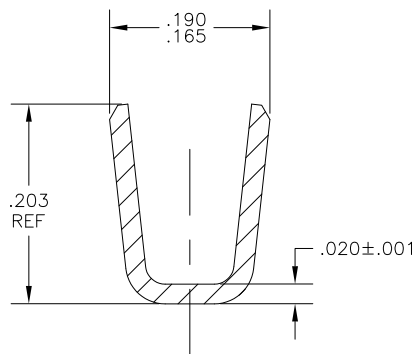
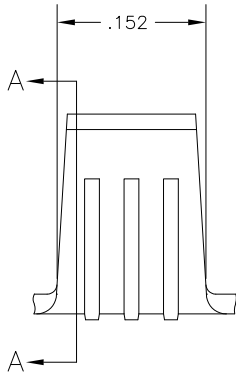
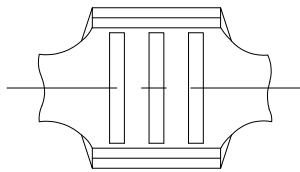
2

1

THIS DRAWING IS UNPUBLISHED. RELEASED FOR PUBLICATION  
 © COPYRIGHT - BY TYCO ELECTRONICS CORPORATION. ALL RIGHTS RESERVED.

LOC	DIST	REVISIONS				
P	LTR	DESCRIPTION	DATE	DWN	APVD	
AF	50	E1	ECR-07-018635(REDRAWN IN AUTOCAD)	03JUL07	HMR	GP

- CONTINUOUS STRIP ON REELS.
- WIRE RANGE: 3300 TO 9000 CMA
- CRIMP WIDTH: .140, "F" TYPE  
 CRIMP HEIGHT  $(\pm .002) = (\text{TOTAL CMA} + 14,600) / 223,200$   
 FOR APPLICATOR INFORMATION CALL: 1-800-722-1111  
 FOR PRODUCT INFORMATION CALL: 1-800-522-6752



SECTION A-A

60470-1  
 PART NO

THIS DRAWING IS A CONTROLLED DOCUMENT.		DWN	RAGHAVENDRA	03JUL07	Tyco Electronics		Tyco Electronics Corporation Harrisburg, PA 17105-3608																		
DIMENSIONS: INCHES		CHK	G.D.PORTA	03JUL07	NAME		SPLICE																		
<table border="1"> <tr><td>0</td><td>PLC</td><td>± -</td></tr> <tr><td>1</td><td>PLC</td><td>± -</td></tr> <tr><td>2</td><td>PLC</td><td>± -</td></tr> <tr><td>3</td><td>PLC</td><td>± .010</td></tr> <tr><td>4</td><td>PLC</td><td>± -</td></tr> <tr><td colspan="2">ANGLES</td><td>± -</td></tr> </table>		0	PLC	± -	1	PLC	± -	2	PLC	± -	3	PLC	± .010	4	PLC	± -	ANGLES		± -	APVD		PRODUCT SPEC		RESTRICTED TO	
0	PLC	± -																							
1	PLC	± -																							
2	PLC	± -																							
3	PLC	± .010																							
4	PLC	± -																							
ANGLES		± -																							
MATERIAL STAINLESS STEEL		FINISH BLACKEN		APPLICATION SPEC		SIZE A3																			
		WEIGHT		CAGE CODE 00779		DRAWING NO 60470																			
		CUSTOMER DRAWING		SCALE 10:1		SHEET 1 of 1																			
				REV E1																					