

4

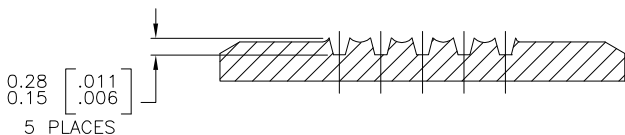
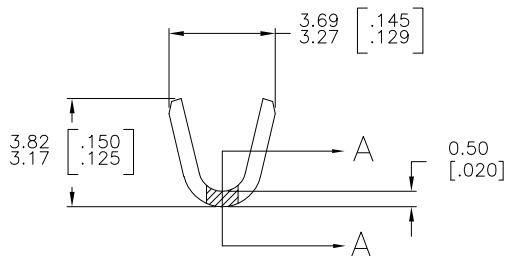
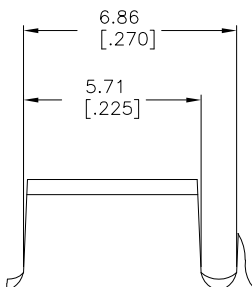
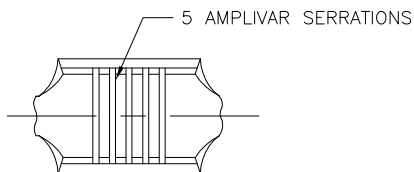
3

2

1

THIS DRAWING IS UNPUBLISHED. RELEASED FOR PUBLICATION
 © COPYRIGHT - BY TYCO ELECTRONICS CORPORATION. ALL RIGHTS RESERVED.

LOC		DIST		REVISIONS			
P	LTR	DESCRIPTION		DATE	DWN	APVD	
	D1	ECR-06-023927 (REDRAWN IN AUTOCAD)		07JUL06	HMR	GP	



SECTION A-A
SCALE 20:1

- CONTINUOUS STRIP ON REELS.
- DIMENSIONS IN BRACKETS ARE IN INCHES.
- FOR ADDITIONAL INFORMATION, SEE APPLICATION SPEC. 114-2009.
- WIRE RANGE: 600-3000 CMA.
- CRIMP WIDTH: .110 F TYPE (AMPLIVAR THRU)
 CRIMP HEIGHT ($\pm .002$) = (TOTAL CMA + 9,400) / 190,500
 GENERAL APPLICATION GUIDELINES MUST BE FOLLOWED AS SPECIFIED IN CATALOG #82221
 FOR APPLICATOR INFORMATION CALL: 1-800-722-1111
 FOR PRODUCT INFORMATION CALL: 1-800-522-6752

OBSOLETE	TIN PLATE	0.51 [.020]	PH BRZ	42076-3
OBSOLETE	-	0.51 [.020]	PH BRZ	42076-2
OBSOLETE	TIN PLATE	0.51 [.020]	BRASS	42076-1
-	-	0.51 [.020]	BRASS	42076-0
FINISH		MATERIAL		PART NO

THIS DRAWING IS A CONTROLLED DOCUMENT.		DWN	07JUL06	Tyco Electronics Corporation Harrisburg, PA 17105-3608	
		CHK	RAGHAVENDRA	SPLICE, AMPLIVAR	
DIMENSIONS: mm [INCHES]		APVD	G.D.PORTA	NAME	
		PRODUCT SPEC	G.D.PORTA	SIZE	
TOLERANCES UNLESS OTHERWISE SPECIFIED:		APPLICATION SPEC	-	CAGE CODE	DRAWING NO
0 PLC	± -	WEIGHT	-	A3	00779
1 PLC	± -	CUSTOMER DRAWING	-	C	42076
2 PLC	± -	SCALE	8:1	SHEET	1 OF 1
3 PLC	± 0.38 [.015]	RESTRICTED TO	-	REV	D1
4 PLC	± -				
ANGLES	± 1' 0"				
MATERIAL	SEE TABLE	FINISH	SEE TABLE		