

4

3

2

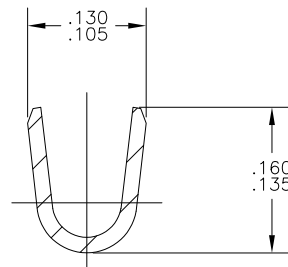
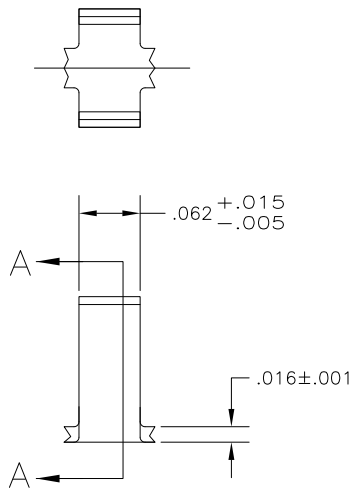
1

THIS DRAWING IS UNPUBLISHED. RELEASED FOR PUBLICATION
 © COPYRIGHT - BY TYCO ELECTRONICS CORPORATION. ALL RIGHTS RESERVED.


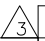
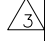
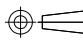
LOC	DIST	REVISIONS			
P	LTR	DESCRIPTION	DATE	DWN	APVD
AF	50				
		REVISED PER ECR-08-030838	30MAR09	HMR	GP

- SUPPLIED 50,000 PIECES PER REEL.
- WIRE RANGE IS 1400-3600 CMA
 CRIMP WIDTH: .090, F TYPE
 CRIMP HEIGHT: $\pm .002 = (\text{TOTAL CMA} + 7600) / 145,100$
 FOR APPLICATOR INFORMATION CALL: 1-800-722-1111
 FOR PRODUCT INFORMATION CALL: 1-800-522-6752

 FOREIGN PRODUCTION ONLY.



SECTION A-A

		.000150 MIN NICKEL PLATE	TEMP 3 STEEL	40862-3
		OBSOLETE	TEMP 3 STEEL	40862-2
		OBSOLETE	TIN	TEMP 3 STEEL
			TIN	TEMP 3 STEEL
			081 BRASS	40862
		FINISH	MATERIAL	PART NUMBER
THIS DRAWING IS A CONTROLLED DOCUMENT.		DWN MICHAEL S. FEHER 29SEP2003 CHK GARY D. PORTA 29SEP2003 APVD GARY D. PORTA 29SEP2003 NAME GARY D. PORTA PRODUCT SPEC APPLICATION SPEC 114-2088 WEIGHT CUSTOMER DRAWING		
DIMENSIONS: INCHES 		TOLERANCES UNLESS OTHERWISE SPECIFIED: 0 PLC ± - 1 PLC ± - 2 PLC ± .010 3 PLC ± - 4 PLC ± - ANGLES ± 1°		
MATERIAL SEE TABLE		Tyco Electronics Corporation Harrisburg, PA 17105-3608 SPLICE SIZE A3 CAGE CODE 00779 DRAWING NO C-40862 RESTRICTED TO SCALE 10:1 SHEET 1 OF 1 REV P		