

4

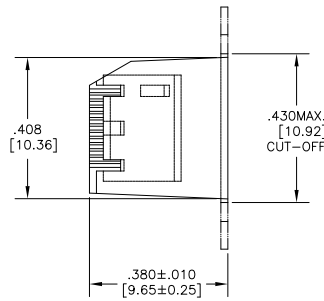
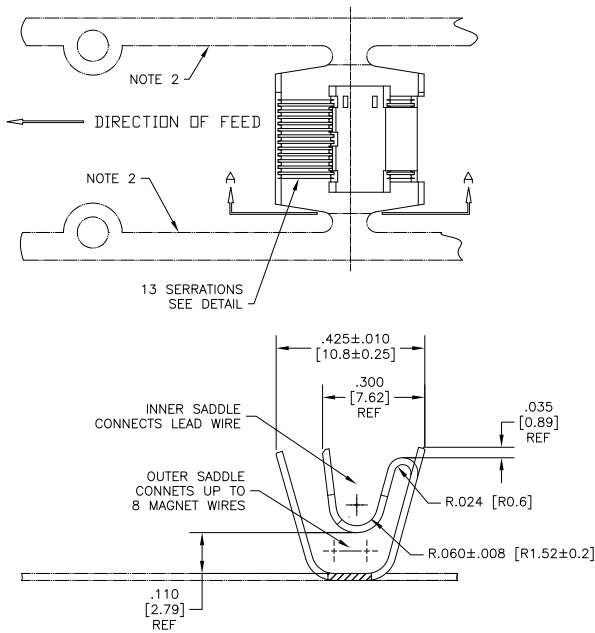
3

2

1

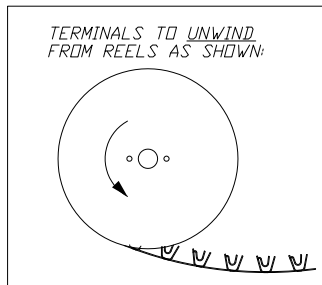
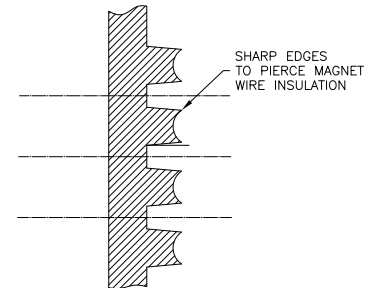
THIS DRAWING IS UNPUBLISHED. RELEASED FOR PUBLICATION  
 © COPYRIGHT BY TYCO ELECTRONICS CORPORATION. ALL RIGHTS RESERVED.

LOC		DIBT		REVISIONS			
P	LR	DATE	BY	APP'D	DESCRIPTION	DATE	BY
A2		REVISED PER ECR-08-005025	03MAR08	DML	DML		



1. SPECIFICATIONS  
 LEAD WIRE : #14-#10 AWG (2.0-5.6mm<sup>2</sup>) (4,000-11,000 CMA)  
 2 WIRES MAX  
 MAGNET WIRE: #20-#11 AWG (0.81-2.30mm<sup>2</sup>) (1,000-9,000 CMA)  
 8 WIRES MAX  
 TOTAL WIRE: 4,000-40,000 CMA  
 CRIMP HEIGHT: (TOTAL CMA + 39,000) / 516,000
  2. CARRIER STRIPS (PHANTOM LINES) TO SCRAP DURING INSERTION.
- △ FINISH: PRE-TIN PLATE OVER COPPER UNDERPLATE.

SERRATION DETAIL  
 SCALE 40X



-		-		-	
△		111-000-001		1601953-1	
FINISH		REFERENCE PART NUMBER		TYCO PART NUMBER	
THIS DRAWING IS A CONTROLLED DOCUMENT.				18JUL2002 OK: G JACONO 18JUL2002 NAME: Tyco Electronics Corporation Harrisburg, PA 17105-3608	
DIMENSIONS: INCHES		0 PLC 1 PLC 2 PLC 3 PLC 4 PLC ANGLES FINISH		APPLICATION SPEC: 114-13093 WEIGHT: - SIZE: A2 CASE CODE: 00779 DRAWING NO: C=1601953	
MATERIAL: BRASS, HALF HARD		CUSTOMER DRAWING		RESTRICTED TO: - SCALE: 1:1 SHEET: 1 of 1 REV: A2	