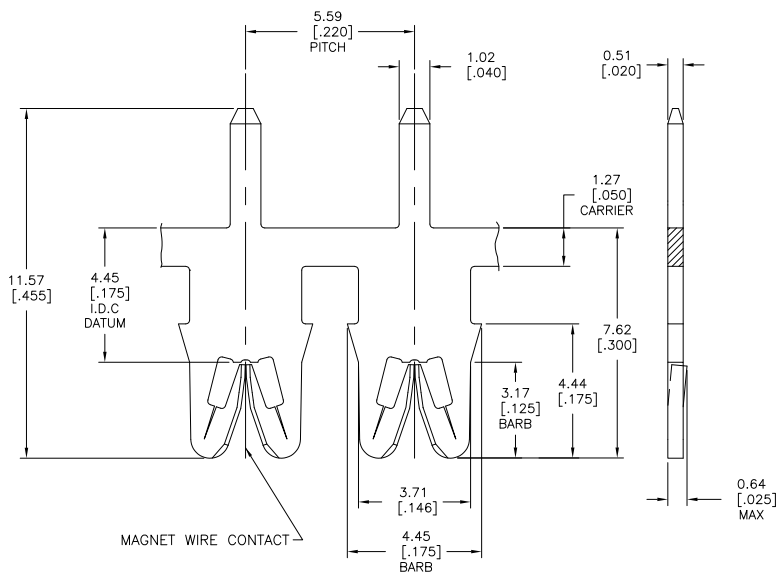
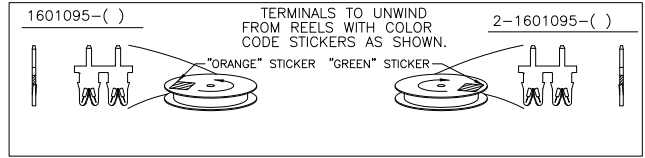
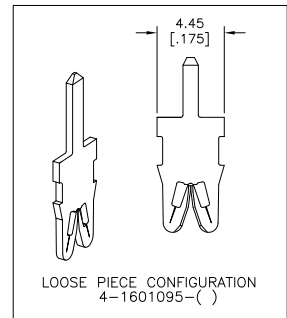


THIS DRAWING IS UNPUBLISHED. RELEASED FOR PUBLICATION.  
 BY TYCO ELECTRONICS CORPORATION. ALL INTERNATIONAL RIGHTS RESERVED.

LOC	DIST	REVISIONS			
F	LN	DESCRIPTION	DATE	BY	APP'D
C2		REVISED PER ECR-10-013696	19AUG10	HMR	GJ



- SPECIFICATIONS:  
 MAGNET WIRE #18 - #34 AWG,  
 1.02MM(.040)-0.16MM(.006) DIA. COPPER,  
 OTHER SIZES MAY BE ACCOMMODATED.  
 CONSULT TYCO ELECTRONICS FOR APPROVAL.
- POCKET RECOMMENDATION: #1601424
- TERMINAL APPLICATION TO COMPLY WITH TYCO ELECTRONICS SPECIFICATION 114-13166. CONSULT PRODUCT ENGINEERING FOR PROPER INSERTION.
- PRELIMINARY - NOT FOR PRODUCTION
- TWO(2) TERMINALS SHOWN FOR ILLUSTRATION PURPOSES ONLY.



PRE-TIN PLATE OVER COPPER UNDERPLATE	-	4-1601095-2													
PRE-TIN PLATE OVER COPPER UNDERPLATE	131-166-014	2-1601095-2													
PRE-TIN PLATE OVER COPPER UNDERPLATE	131-165-014	1601095-2													
FINISH		REFERENCE PART NUMBER													
PART NUMBER		PART NUMBER													
THIS DRAWING IS A CONTROLLED DOCUMENT.															
DIMENSIONS: mm [INCHES]	<table border="1"> <tr><th colspan="2">TOLERANCES UNLESS OTHERWISE SPECIFIED</th></tr> <tr><td>0 PL</td><td>± .005</td></tr> <tr><td>1 PL</td><td>± .005</td></tr> <tr><td>2 PL</td><td>± 0.1%(.005)</td></tr> <tr><td>3 PL</td><td>± .005</td></tr> <tr><td>4 PL</td><td>± .005</td></tr> <tr><td>ANGLES</td><td>± .5°</td></tr> </table>	TOLERANCES UNLESS OTHERWISE SPECIFIED		0 PL	± .005	1 PL	± .005	2 PL	± 0.1%(.005)	3 PL	± .005	4 PL	± .005	ANGLES	± .5°
TOLERANCES UNLESS OTHERWISE SPECIFIED															
0 PL	± .005														
1 PL	± .005														
2 PL	± 0.1%(.005)														
3 PL	± .005														
4 PL	± .005														
ANGLES	± .5°														
MATERIAL BRASS, SPRING HARD	FINISH SEE TABLE	<table border="1"> <tr> <td>           DWG: J. WELLS 11JAN2002            CHK: M. FEHR 11JAN2002            APP'D: K. RANDOLPH 11JAN2002            PRODUCT SPEC: 108-2085            APPLICATION SPEC: 3            WEIGHT: -            CUSTOMER DRAWING         </td> <td>           Tyco Electronics Corporation            Harrisburg, PA 17105-3608            STANDARD RANGE WIRE TO 1.02 X 0.51            P.C.B. SIAMEZE TERMINAL            SIZE: A2            CASE CODE: 00779            DRAWING NO: C=1601095            SCALE: 11:1            SHEET: 1 of 1            REV: C2         </td> </tr> </table>	DWG: J. WELLS 11JAN2002 CHK: M. FEHR 11JAN2002 APP'D: K. RANDOLPH 11JAN2002 PRODUCT SPEC: 108-2085 APPLICATION SPEC: 3 WEIGHT: - CUSTOMER DRAWING	Tyco Electronics Corporation Harrisburg, PA 17105-3608 STANDARD RANGE WIRE TO 1.02 X 0.51 P.C.B. SIAMEZE TERMINAL SIZE: A2 CASE CODE: 00779 DRAWING NO: C=1601095 SCALE: 11:1 SHEET: 1 of 1 REV: C2											
DWG: J. WELLS 11JAN2002 CHK: M. FEHR 11JAN2002 APP'D: K. RANDOLPH 11JAN2002 PRODUCT SPEC: 108-2085 APPLICATION SPEC: 3 WEIGHT: - CUSTOMER DRAWING	Tyco Electronics Corporation Harrisburg, PA 17105-3608 STANDARD RANGE WIRE TO 1.02 X 0.51 P.C.B. SIAMEZE TERMINAL SIZE: A2 CASE CODE: 00779 DRAWING NO: C=1601095 SCALE: 11:1 SHEET: 1 of 1 REV: C2														