

4

3

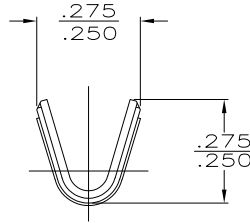
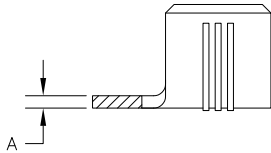
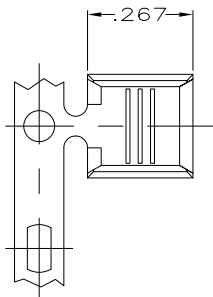
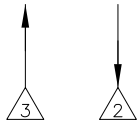
2

1

THIS DRAWING IS UNPUBLISHED. RELEASED FOR PUBLICATION  
 © COPYRIGHT - By - ALL RIGHTS RESERVED.

LOC	DIST	REVISIONS			
P	LTR	DESCRIPTION	DATE	DWN	APVD
AF	50	S1	REVISED PER ECO-11-005027	11MAR11	RK HMR

REELING OFF TOP  
OF REEL  
WIRE BARREL UP



- 1 PRODUCT PROVIDED IN STRIP FORM ON REELS;  
BREAKS MAY BE PRESENT
- 2 STANDARD REELING.
- 3 REVERSE REELING.
- 4 CRIMP WIDTH: .180 F TYPE  
CRIMP HEIGHT:  $(\pm.002) = (\text{TOTAL CMA} + 28,300) / 289,800$   
FOR APPLICATOR INFORMATION CALL: 1-800-722-1111  
FOR PRODUCT INFORMATION CALL: 1-800-522-6752
- 5 WIRE RANGE FOR NEW APPLICATIONS: 7000-12,000 CMA  
(WIRE RANGE APPROVED FOR APPLICATIONS IMPLEMENTED  
PRIOR TO 2005: 9000-16,000 CMA).

3	.031±.001	5	TIN	STEEL	61299-8
			NONE	BRASS	61299-3
2	.032±.001		TIN	STEEL	61299-2
	.031±.001				61299-1
REELING	A	CMA WIRE SIZE	FINISH	MATERIAL	PART NUMBER

THIS DRAWING IS A CONTROLLED DOCUMENT.

DWN	19DEC2002	
CHK	19DEC2002	
APVD	19DEC2002	
NAME		
DIMENSIONS: INCHES TOLERANCES UNLESS OTHERWISE SPECIFIED: 0 PLC ± - 1 PLC ± - 2 PLC ± - 3 PLC ± .010 4 PLC ± - ANGLES ± -		NAME GARY PORTA PRODUCT SPEC APPLICATION SPEC 114-2088 WEIGHT -
MATERIAL	SEE TABLE	FINISH SEE TABLE SIZE A3 CAGE CODE 00779 DRAWING NO 61299 RESTRICTED TO -
CUSTOMER DRAWING		SCALE 4:1 SHEET 1 OF 1 REV S1