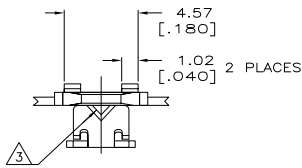


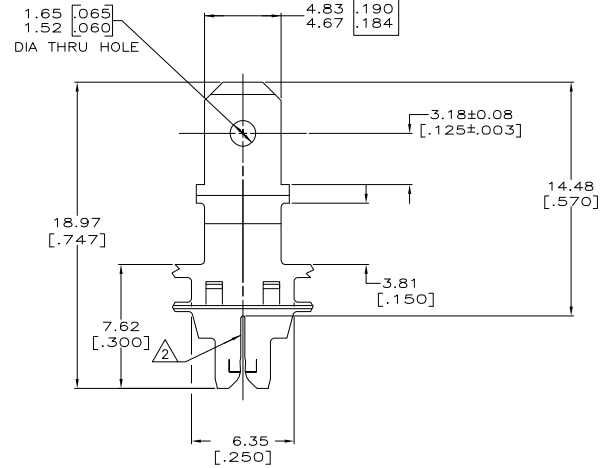
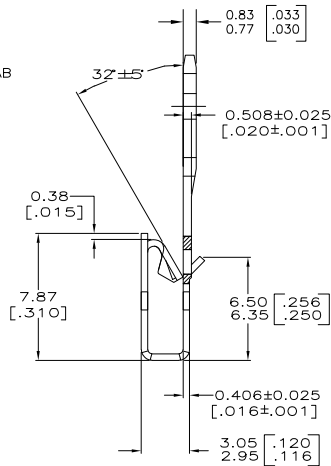
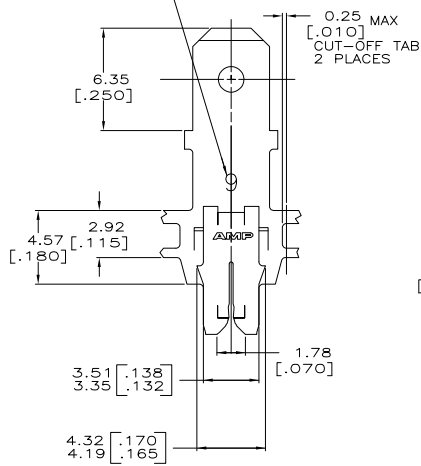
THIS DRAWING IS UNPUBLISHED. RELEASED FOR PUBLICATION. BY TYCO ELECTRONICS CORPORATION. ALL RIGHTS RESERVED.

LOC	QTY	REV	DESCRIPTION	DATE	BY	APP
AF	50	C	REVISED PER ECR-06-010412	02NOV06	HMR	KR



- 1 CONTINUOUS STRIP ON REELS WITH TERMINALS LOCATED ON 8.38 ± 0.08 $[\.330 \pm .003]$ CENTERS.
- 2 SLOTS ACCEPT EITHER A SINGLE OR DOUBLE MAGNET WIRE OF THE SAME SIZE AND TYPE. COPPER RANGE: $0.30-0.51\text{mm}$ $[\#28.5-\#24]$ AWG.
- 3 POKE-IN ACCEPTS A $0.81-1.02\text{mm}^2$ $[\#20-\#18]$ AWG SOLID OR FUSED STRANDED LEAD WIRE.
- 4 PRELIMINARY - NOT FOR PRODUCTION.
- 5 PREPRODUCTION - FASR REQUIRED

IDENTIFICATION NUMBER 9 FOR MAGNET WIRE RANGE



4M PRE-MILLED BRASS	1217857-2
0B2 PRE-MILLED BRASS	1217857-1
MATERIAL	PART NUMBER

THIS DRAWING IS A CONTROLLED DOCUMENT.		DN MICHAEL S. FEHER 23482002	Electronic Tyco Electronics Corporation																				
DIMENSIONS: TO DIMENSIONS UNLESS OTHERWISE SPECIFIED:		DR KURT A. RANDELEH 23482002	Harrisburg, PA 17105-3608																				
mm [INCHES]		APR KURT A. RANDELEH 23482002	TYPE TERMINAL																				
<table border="1"> <tr><td>Ø</td><td>PIC</td><td>±</td><td>-</td></tr> <tr><td>□</td><td>PIC</td><td>±</td><td>0.25[.010]</td></tr> <tr><td>∠</td><td>PIC</td><td>±</td><td>-</td></tr> <tr><td>H</td><td>PIC</td><td>±</td><td>-</td></tr> <tr><td>ANGLES</td><td>±</td><td>-</td><td>-</td></tr> </table>		Ø	PIC	±	-	□	PIC	±	0.25[.010]	∠	PIC	±	-	H	PIC	±	-	ANGLES	±	-	-	PRODUCT SPEC 108-2012	POKE-IN / 4.75 [.187] FASTON TAB COMBINATION, 300 SERIES MAG-MATE
Ø	PIC	±	-																				
□	PIC	±	0.25[.010]																				
∠	PIC	±	-																				
H	PIC	±	-																				
ANGLES	±	-	-																				
MATERIAL SEE TABLE		APPLICATION SPEC 114-2094	SIZE A2																				
FINISH 0.0002(32) (000080) MIN TIN PLATE		WEIGHT -	SCALE 6:1																				
CUSTOMER DRAWING		DRAWING NO. 00779	REVISIONS 1 of 1																				

AMP 1471-B REV 31MMR2000

1217857

A