

4

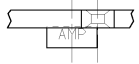
3

2

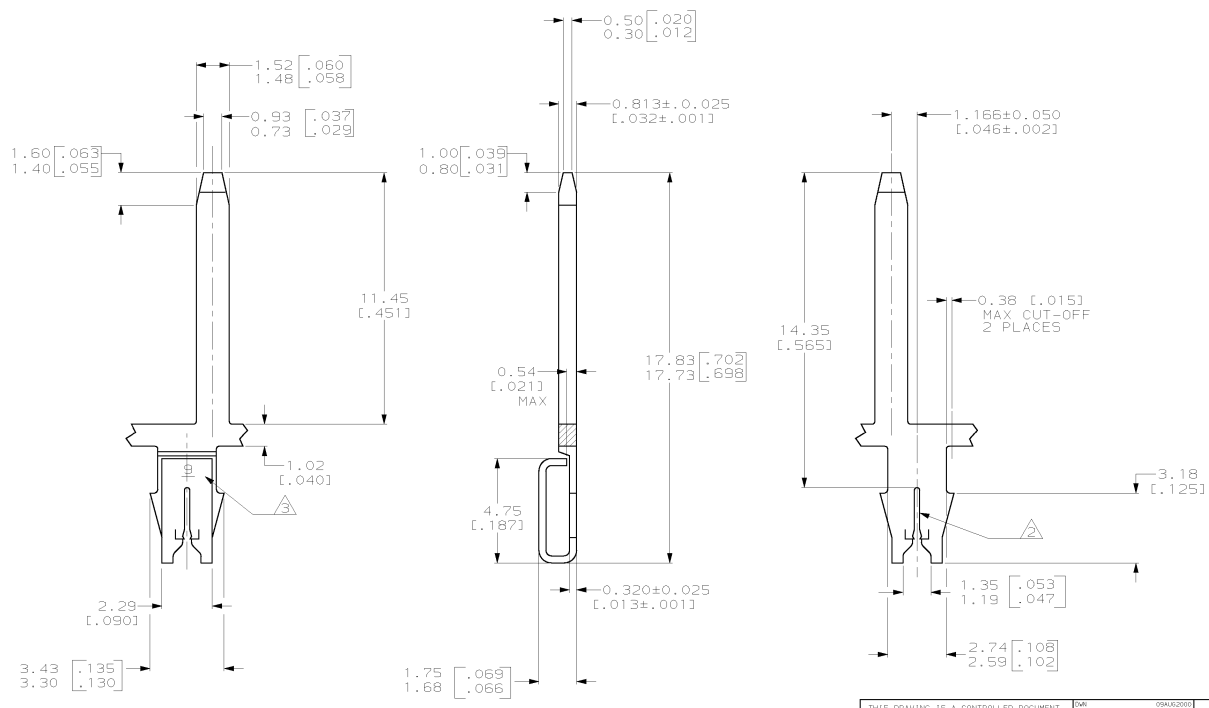
1

THIS DRAWING IS UNPUBLISHED. RELEASED FOR PUBLICATION. (C) COPYRIGHT IS BY AMP INCORPORATED. ALL RIGHTS RESERVED.

REV	DATE	BY	APP'D	DESCRIPTION
C	13 JUN 01	JR	KR	REL PER 063A-0316-01



- 1 CONTINUOUS STRIP ON REELS WITH TERMINALS LOCATED ON 5.08 ± 0.08 [1.200 ± .003] CENTERS.
- △ SLOT ACCEPTS 0.36-0.45mm [#27-#25] AWG COPPER MAGNET WIRE
- △ IDENTIFICATION NUMBER 9 FOR WIRE SLOT SIZE.
- △ 0.002032 [0.00080] MIN TIN PLATE OVER 0.00254 [0.00100] MIN COPPER UNDERPLATE.



1217459-1 PART NUMBER

THIS DRAWING IS A CONTROLLED DOCUMENT.		DATE: 06/04/2000	BY: MICHAEL S. FEJER	AMP Incorporated Harrisburg, PA 17105-3608
DRAWN BY: FURT A. RANDOLPH		DATE: 06/04/2000	BY: FURT A. RANDOLPH	AMP Incorporated Harrisburg, PA 17105-3608
CHECKED BY: FURT A. RANDOLPH		DATE: 06/04/2000	BY: FURT A. RANDOLPH	AMP Incorporated Harrisburg, PA 17105-3608
PROJECT SPEC: 108-2012		APPLICATION SPEC: 114-2069	STRT CASE CODE: A200779	RESTRICTED TO: -
MATERIAL: #04 PRE-MILLED BRASS		FINISH: △	CUSTOMER DRAWING	SCALE: 8:1 SHEET 1 OF 1 REV C