

4

3

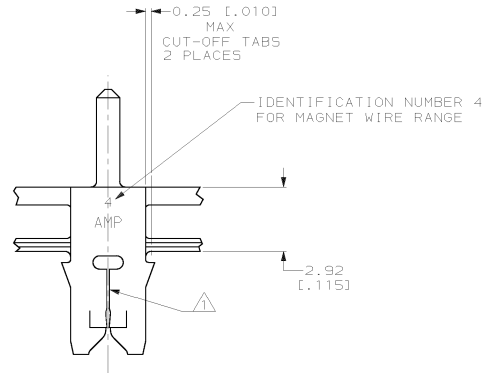
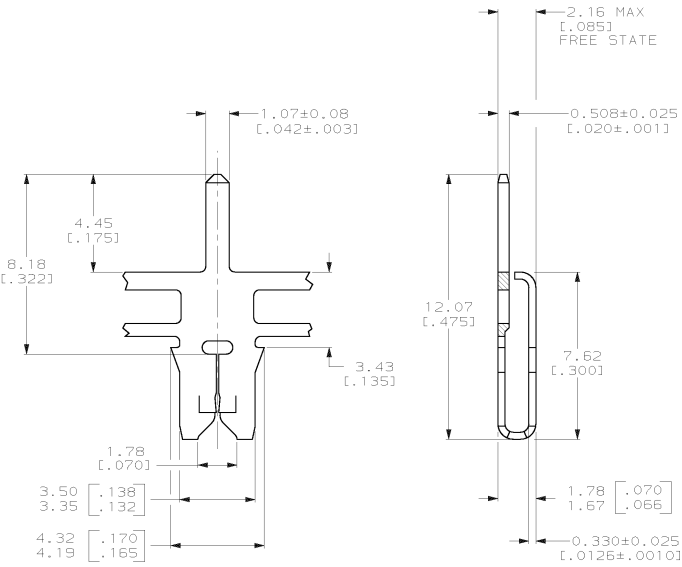
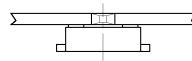
2

1

THIS DRAWING IS UNPUBLISHED. RELEASED FOR PUBLICATION. (C) COPYRIGHT IS BY AMP INCORPORATED. ALL RIGHTS RESERVED.

REV	DATE	BY	APP'D	DESCRIPTION
AF	50			
A				REVISED PER 053A-0225-00

- 1 SLOT TERMINATES 0.18-0.23mm [#33-#31] AWG COPPER MAGNET WIRE EITHER SINGLE OR DOUBLE OF THE SAME SIZE.
- 2 CONTINUOUS STRIP ON REELS WITH TERMINALS LOCATED ON 8.38±0.08 [.330±.003] CENTERS.
- 3 0.002032 [.000080] MIN TIN OVER 0.00127 [.000050] MIN NICKEL.



1217302-1  
PART NUMBER

THIS DRAWING IS A CONTROLLED DOCUMENT.		DWG: MICHAEL S. FEHNER 2/20/00 DRW: FURT A. RANDOLPH 2/20/00 APPR: FURT A. RANDOLPH 2/20/00	<b>AMP</b> AMP Incorporated Harrisburg, PA 17105-3608
DIMENSIONS: mm (INCHES) DECIMALS: 0.001 (0.0005) ANGLES: 0.001 (0.0005)	PRODUCT SPEC: 108-2012 APPLICATION SPEC: 114-2046 FINISH: -	TITLE: SOLDER TAB, 1.07 [.042], 300 SERIES MAG-MATE™ CASE CODE: 1217302 PRINTING NO: A200779	RESTRICTED TO: - SCALE: 8:1 SHEET: 1 OF 1 REV: A

1217302

B

A