

4

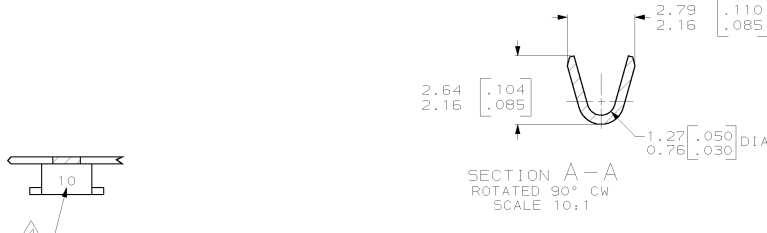
3

2

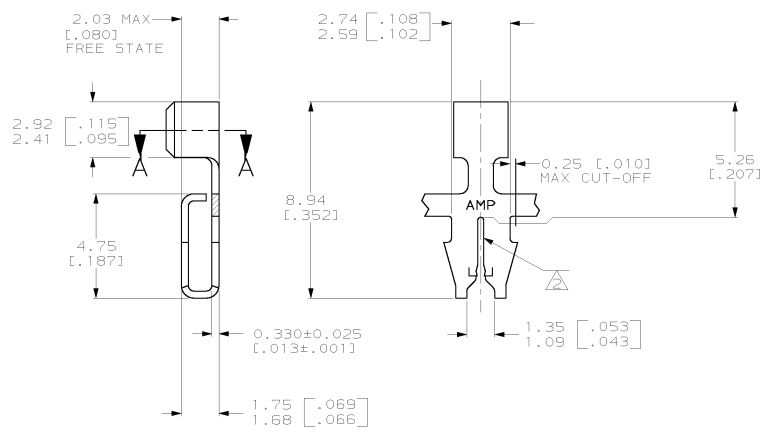
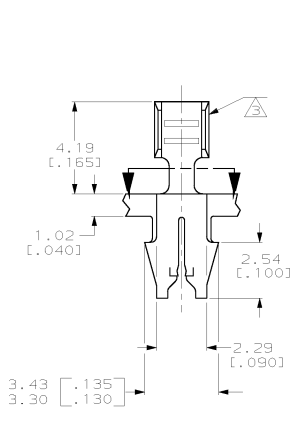
1

THIS DRAWING IS UNPUBLISHED. RELEASED FOR PUBLICATION. (C) COPYRIGHT IS BY AMP INCORPORATED. ALL RIGHTS RESERVED.

LOC	DIST	REVISIONS		
AF	50	DESCRIPTION	DATE	BY
		A	REVISED PER EC 061A-0170-99	13.JUL.99 SDW KAR



- 1 CONTINUOUS STRIP ON REELS (NO SPLICES) WITH TERMINALS LOCATED ON 8.38±0.08 [0.330±0.003] CENTERS.
- △ SLOT ACCEPTS 0.40-0.51mm [#26-#24] AWG COPPER MAGNET WIRE 2 WIRES MAX OF THE SAME SIZE PER SLOT.
- △ WIRE BARREL ACCEPTS 0.3-1.0mm² [#22-#18] AWG LEAD WIRE.
- △ IDENTIFICATION NUMBER 10 FOR WIRE SLOT SIZE.
- △ 0.00203 [0.00080] - 0.00381 [0.00150] TIN PLATE OVER  
0.00254 [0.00100] - 0.00127 [0.00050] NICKEL UNDERPLATE.



3.56 [0.140]	F	1.78 [0.070]	1.08 [0.043]	0.4# [0.22]
			1.18 [0.047]	0.5# [0.20]
			1.32 [0.052]	0.8# [0.18]
STRIP LENGTH ±.015	TYPE	WIDTH	HEIGHT ±.051 [0.003]	WIRE
WIRE BARREL CRIMP				

1217146-1  
PART NUMBER

THIS DRAWING IS A CONTROLLED DOCUMENT. DWG: MICHAEL S. FEHNER 310481999  
DATE: 07/25/1999  
APP: JEFF E. BUTH 310481999  
PART: FURT & RANDO OPH 09/04/1999

AMP Incorporated  
Harrisburg, PA 17105-3608

TERMINAL, F-CRIMP,  
187 SERIES MAG-MATE™

MATERIAL: H04 BRASS FINISH: -

APPLICATION SPEC: 108-2012  
APPLICATION SPEC: 114-2059

SCALE: 8:1 SHEET: 1 OF 1 REV: A