

4

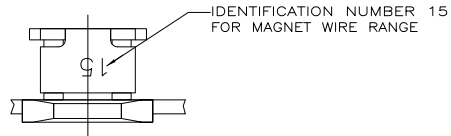
3

2

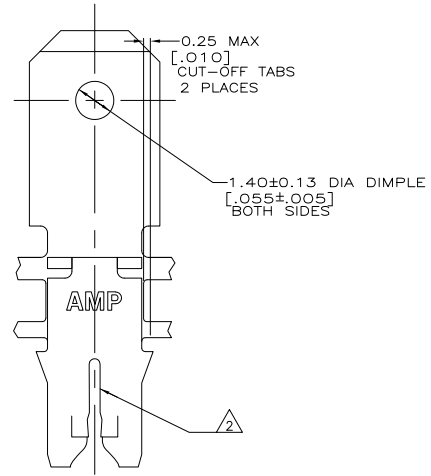
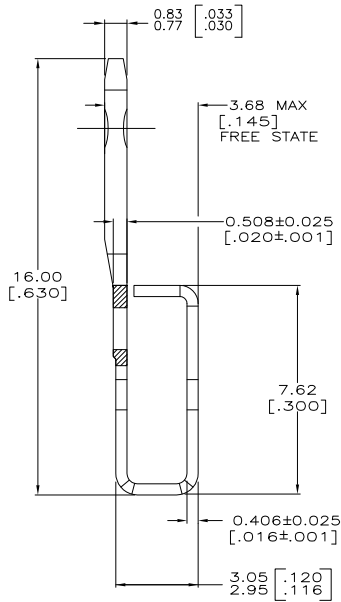
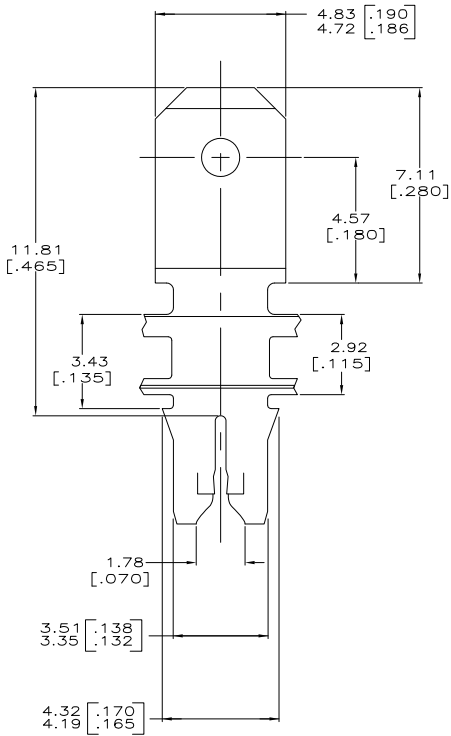
1

THIS DRAWING IS UNPUBLISHED. RELEASED FOR PUBLICATION
 © COPYRIGHT BY TYCO ELECTRONICS CORPORATION. ALL RIGHTS RESERVED.

LOC		DIBT		REVISIONS			
F	LR	DESCRIPTION	DATE	BY	APP'D		
AF	50	D	REVISED PER ECR-06-010412	26OCT06	HMR	KR	



- CONTINUOUS STRIP ON REELS WITH TERMINALS LOCATED ON 5.59 ± 0.08 [.220 ± .003] CENTERS.
- SLOT ACCEPTS A SINGLE WIRE MAX OF 0.64–0.81mm [#22–#20] AWG COPPER MAGNET WIRE.
- AFTER INSERTION INTO PLASTIC HOLDER TAB PORTION MUST BE BENT OVER 45° TO 90° OR POTTED-IN TO PREVENT PULL-OUT WHEN MATING RECEPTACLE IS DISCONNECTED.



1217065-1
 PART NUMBER

THIS DRAWING IS A CONTROLLED DOCUMENT.		DRN R. GRZYBOWSKI 20FEB99	Tyco Electronics Corporation Harrisburg, PA 17105-3608	
DIMENSIONS: mm [INCHES]		CHK M. S. FISHER 20FEB99	TERMINAL, TAB 4.75[.187] FASTON™ MAG-MATE™	
TOLERANCES UNLESS OTHERWISE SPECIFIED:		APPC N.E. NEFF 20FEB99	RESTRICTED TO	
Ø PLG ± .010	Ø PLG ± .025 (Ø10)	PRODUCT SPEC 108-2012	SIZE A2	CAGE CODE 00779
Ø PLG ± .010	Ø PLG ± .025 (Ø10)	APPLICATION SPEC 114-2046	DRAWING NO C=1217065	SCALE 10:1
MATERIAL OR2 PRE-MILLED BRASS	FINISH 0.002032[.000080] MAX TN	WEIGHT -	CUSTOMER DRAWING	SHEET 1 of 1

AMP 1471-9 REV 31MM2000

1217065

A