

4

3

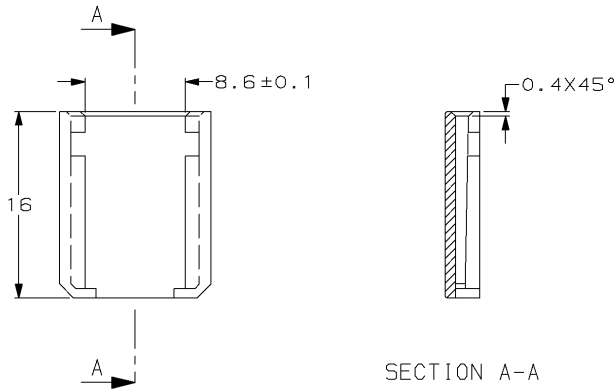
2

1

THIS DRAWING IS UNPUBLISHED.  
 DIFFUSION RESTREINTE AMP  
 © COPYRIGHT 1989

RELEASED FOR PUBLICATION  
 DIFFUSION PUBLIQUE  
 ALL RIGHTS RESERVED.  
 TOUS DROITS RESERVES

LOC	DISP	REVISIONS				
P	LTR	REV	DESCRIPTION MODIFICATIONS	DATE	DWN DESS.	APVD APP.
	A		UP DATED	09/94	DE	-
	B		NEW TITLE BLOCK	09-OCT-96	MP	-
	C		ENGLISH TRANSLATION	18-MAR-98	JL	-



SECTION A-A

144936-1	LOCKING DEVICE FOR MQ5 HOUSING	BLACK (NOIR)
AMP PART NUMBER	DESCRIPTION	COLOR (COULEUR)

<small>THIS DRAWING IS A CONTROLLED DOCUMENT FOR AMP INCORPORATED          IT IS SUBJECT TO CHANGE AND THE CONTROL LINE ENGINEERING          ORGANIZATION SHOULD BE CONTACTED FOR THE LATEST REVISION.          CE PLAN EST UN DOCUMENT CONTROLÉ PAR AMP INCORPORATED.          IL EST SUSCEPTIBLE D'ÊTRE REVISÉ. CONTACTER LE SERVICE          TECHNIQUE D'AMP DE FRANCE POUR OBTENIR LA DERNIÈRE RÉVISION.</small>		DWN/DESSINE <b>D. ELISEI</b> 04/11/93 CHK/VERIFIE <b>J. LALANGE</b> 08-APR-98 APVD/APPROUVE <b>J.J. REVIL</b> 08-APR-98	<b>AMP</b> AMP DE FRANCE 95301 PONTOISE
DIMENSIONS: mm 	TOLERANCES UNLESS OTHERWISE SPECIFIED, (SUIVI NIB DE DECIMALES): FRACTIONS: DECIMALS: ANGLES: FINISH:	NAME TITRE <b>LOCKING DEVICE FOR MQ5 HOUSING</b>	SIZE FORMAT <b>A3</b>
MATERIAL MATIERE <b>PBT</b>	FINISH <b>-</b>	PRODUCT SPEC SPEC. PRODUIT <b>-</b>	CASE CODE <b>00779</b>
CUSTOMER DRAWING/PLAN CLIENT		APPLICATION SPEC SPEC. APPLICATION <b>-</b>	DRAWING NO No PLAN <b>144936</b>
WEIGHT MASSE APPROX. <b>-</b>		UNIFORMITY POUR REFERENCE <b>1</b>	SCALE ECHELLE <b>1:1</b>
		SHEET FEUILLE <b>1</b>	OF DE <b>1</b>
		REV <b>C</b>	

AMP1470-19 REV 10/93

\_19-MAR-98 09:11:44 jL2650 /home/dept1302/jL2650/edmod