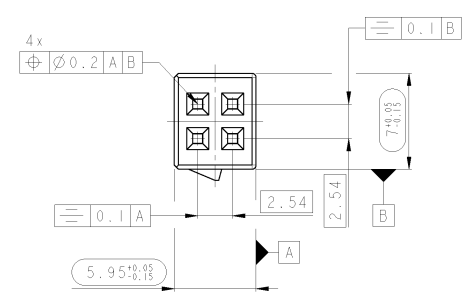


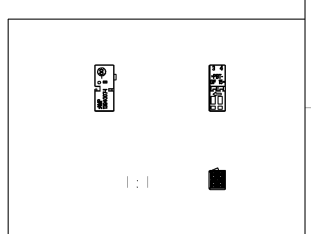
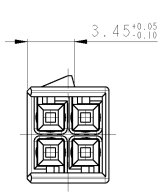
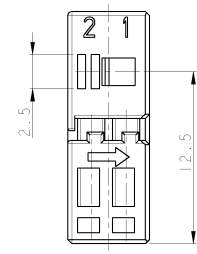
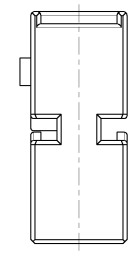
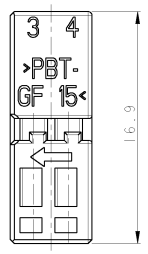
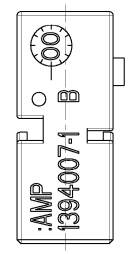
REV. NO.	DATE	BY	CHKD	DESCRIPTION
A	31JAN00	ASC	JWO	New Drawing
B	11FEB00	ASC	JWO	Locking latch improved
B1	03NOV00	SBL	ASC	Spec number added



NOTES
Bemerkungen

Massgebend ist der deutsche Text
1. ONLY THE GERMAN-LANGUAGE VERSION SHALL BE BINDING
Drahtgrößenbereich bis 0,75mm²
2. WIRE SIZE RANGE UNTIL 0,75mm²

Einzelheiten der Ausführung bleiben dem Hersteller überlassen
3. DETAILS OF DESIGN ARE LEFT TO MANUFACTURER



AMP PART NO.	REV.	MATERIAL	SURFACE COLOR	DESCRIPTION	ITEM NO.	MATERIAL	WEIGHT	DATE	BY	CHKD	SCALE	SHEET NO.	TOTAL SHEETS	REV.
1394007-1	B	PBT-GF15	schwarz/BLACK	SOCKET HOUSING	1	PBT-GF15	0.47g	10JAN2000	A. Schrockel	W. J. L.	5:1	1	1	B1

tyco Electronics Tyco Electronics AMP GmbH
D - 44625 Besseln

MOS Buchsengehäuse, 4polig
MOS SOCKET HOUSING, 4POS.

SIZE: A2 CASE CODE: 100779 DRAWING NO.: 1394007
REVISIONS: B1