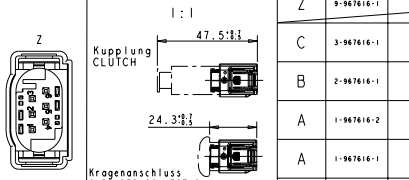
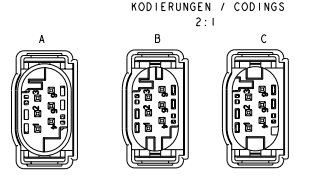
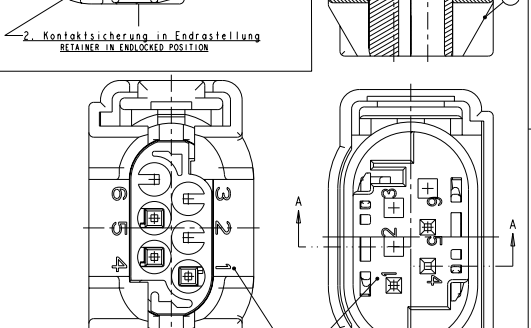
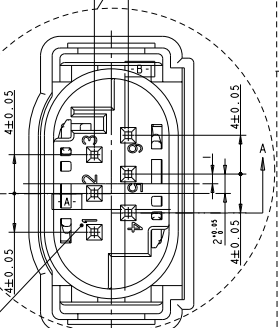
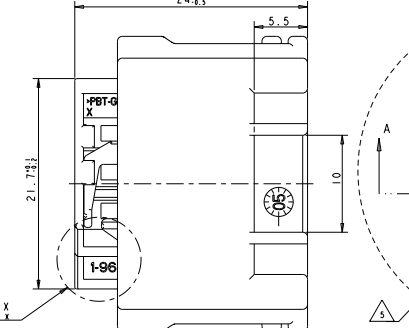
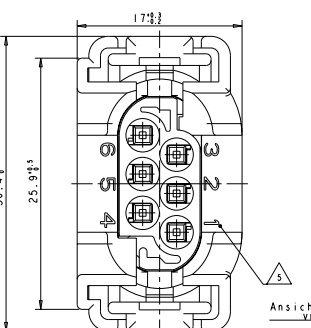
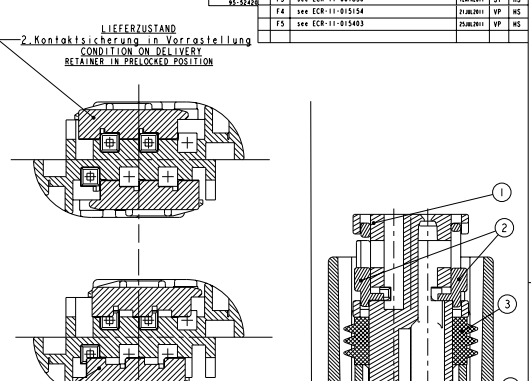
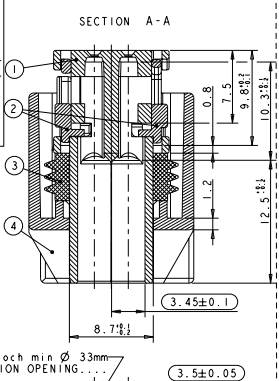
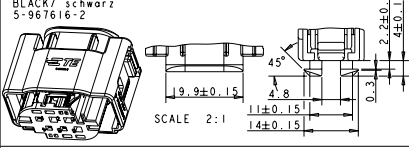
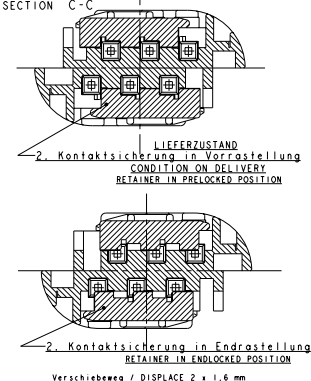


THIS DRAWING IS PROPERTY OF STYRIA WIRTSCHAFTS UNIVERSITÄT LEON. ANY REPRODUCTION OR DISTRIBUTION WITHOUT THE WRITTEN PERMISSION OF THE COMPANY IS PROHIBITED.

ANSCHLUSSBEREICH FÜR WELLRÖHRODAPTER
CONNECTING AREA FOR CORRUGATED TUBE ADAPTER

REV.	DATE	REVISIONS	BY	CHK
1	12.06.94	INITIAL DESIGN	ST	MS
2	12.06.94	REVISED	VP	MS
3	12.06.94	REVISED	VP	MS



B	5-967616-2	A	4	1	Schaltzappe	PBT-GF 15	schwarz
B	4-967616-2	A	2	2	Dichtung	MOV30	natür
B	7-967616-3	A	4	1	Buchsengehäuse	PBT-GF 15	grün
Z	9-967616-1	A	4	1	Schaltzappe	PBT-GF 15	schwarz
C	3-967616-1	A	4	1	Buchsengehäuse	PBT-GF 15	grün
B	2-967616-1	E	3	1	Dichtung	MOV30	natür
A	1-967616-2	E	3	1	Dichtung	MOV30	natür
A	1-967616-1	E	3	1	Dichtung	MOV30	natür

Bemerkungen :
NOTES:
1. Maßgebend ist der deutsche Text!
ONLY GERMAN LANGUAGE VERSION SHALL BE AUTHORITY!
2. Posend zu Buchsenkontakt für Einzelleiterabdichtung:
SUITABLE FOR SOCKET CONTACT FOR SINGLE WIRE SEALING
TE 962005 (DOB 0.2/0.5 mm), 962006 (DOB 0.75 mm)
3. Kragenanschluss siehe Zeichnung:
SHROUDED CONNECTION SEE DRAWING:
TE: 114-10083-126
4. Posend für Leiterquerschnitt:
SUITABLE FOR WIRE SIZE RANGE:
10.....
DIREKTION VON FIGUREN OPTIONAL

THIS DRAWING IS A CONTROLLED DOCUMENT.
DATE: 29-JUL-94
BY: Schöberl
MOS SOCKET HOUSING SWS, 6 POS. ASSY
MOS Buchsengehäuse, EDS, 6pol. kompl.
A | 00779 | 967616
CUSTOMER DRAWING