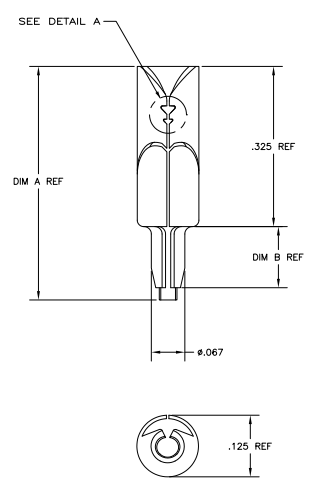
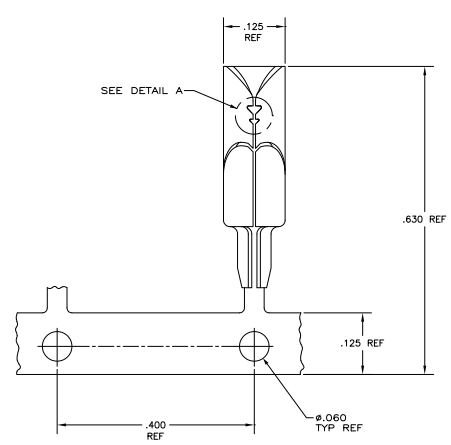


THIS DRAWING IS UNPUBLISHED
 ALL RIGHTS RESERVED

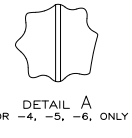
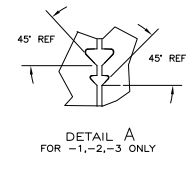
REV	DATE	DESCRIPTION	BY	CHK	APP
AF 58					
V2		EDR PER 11-00886			



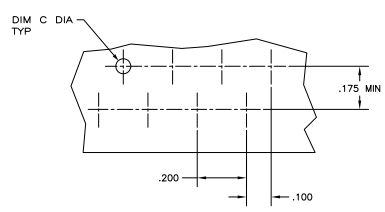
LOOSE PIECE
 -1, -3, -4, -6, & -8 ONLY



STRIP MOUNTED
 -2, -5 & -7 ONLY



- FOR USE IN PRINTED CIRCUIT BOARD, 3/64-1/8 THICK.
 - WIRE RANGE: 18-28 AWG (SOLID) OR (STRANDED) WIRE. MAX OUTSIDE DIA .086.
 - FURNISHED AS LOOSE PIECE OR STRIP MOUNTED BY SMALL END OF BARREL.
 - TERMINAL SHALL ACCOMMODATE ONE OR TWO WIRES OF THE SAME TYPE AND WITHIN PLUS OR MINUS ONE WIRE GAGE SIZE. EXAMPLE:
 24 AWG MAY BE MIXED WITH EITHER 26 OR 22 AWG.
 - RECOGNIZED UNDER COMPONENT RECOGNITION PROGRAM OF UNDERWRITERS LABORATORIES INC., FILE NO. E-28476.
 - FOR 18-22 AWG WIRE USE INSERTION TOOL, PART NO.
- ⚠ WHEN USING TEFLON INSULATED WIRES USE 552699-1, -2 OR -3 ONLY.
 ⚠ WHEN USING 28 AWG SOLID, TWO WIRES PER TERMINAL, USE 552699-4, -5, -6, -7 OR -8 ONLY.
 ⚠ PRELIMINARY - NOT FOR PRODUCTION



SUGGESTED PRINTED CIRCUIT BOARD MOUNTING DIMENSIONS

TERMINAL INSERTION TOOL (REF)	PUNCHED HOLE DIM. C	DRILLED HOLE DIM. C	DIM. B	DIM. A	PC BOARD THICKNESS	DESCRIPTION	PART NO.
1-453973-4			.458	.062-.094		STRIP MOUNTED, REVERSE REELED	1-552699-0
2-453973-1			.483	.094-.125		SUPERSEDED BY -4	552699-6
230549-1			.483	.062-.125		SAME AS -2 EXCEPT AS SHOWN IN DETAIL A	552699-5
1-453973-4	.060-.064	.061-.065	.458	.062-.094	.118	SAME AS -1 EXCEPT AS SHOWN IN DETAIL A	552699-4
2-453973-1			.458	.062-.094		SUPERSEDED BY -1	552699-3
230549-1			.458	.062-.094		AS SHOWN, STRIP MOUNTED	552699-2
1-453973-4			.483	.094-.125		AS SHOWN, LOOSE PIECE	552699-1
230549-1			.458	.062-.094			

THIS DRAWING IS A CONTROLLED DOCUMENT.

DIMENSIONS: INCHES
 UNLESS OTHERWISE SPECIFIED: DECIMALS
 DIMENSIONS: MILLIMETERS
 UNLESS OTHERWISE SPECIFIED: DECIMALS
 DIMENSIONS: MILLIMETERS
 DIMENSIONS: MILLIMETERS
 UNLESS OTHERWISE SPECIFIED: DECIMALS
 DIMENSIONS: MILLIMETERS

MATERIAL: PHOS BRONZE
 FINISH: PRE-TINNED

CUSTOMER DRAWING
 DATE: 00779
 SIZE: 1:1
 SHEET: 1 OF 1
 REV: V2

TE Connectivity
 TERMINAL, AMP BARREL, .125 DIA