

4

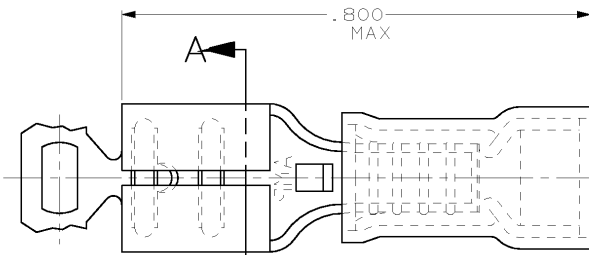
3

2

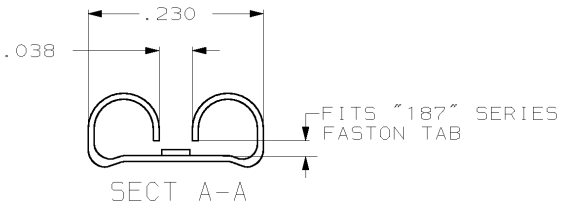
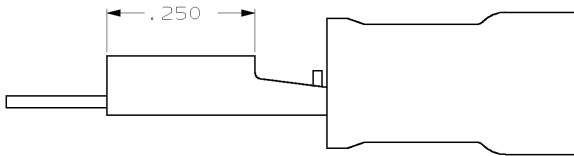
1

THIS DRAWING IS UNPUBLISHED. RELEASED FOR PUBLICATION .19
 © COPYRIGHT 19 BY AMP INCORPORATED. ALL RIGHTS RESERVED.

LOC		DIST		REVISIONS			
P	LTR	DESCRIPTION		DATE	DWN	APVD	
G	14	G	REV PER 063A-0176-02	08APR02	JR	TM	



- 1. INSULATION DIA .170 MAX
- 2. FITS TAB .020 THK



-	-	640918-1
QTY	PACKAGE TYPE	PART NO

AMP INCORPORATED CUSTOMER SERVICE SYSTEM		MAX RECOMMENDED OPERATING TEMPERATURE: -	THIS DRAWING IS A CONTROLLED DOCUMENT FOR AMP INCORPORATED. IT IS SUBJECT TO CHANGE AND THE CONTROLLING ENGINEERING ORGANIZATION SHOULD BE CONTACTED FOR THE LATEST REVISION.		DWN L OLMEDA 26 JUN 95	26 JUN 95	AMP Incorporated Harrisburg, PA 17105-3608				
FOR ADDITIONAL PRODUCT INFORMATION OR COPIES OF DRAWINGS AND TECHNICAL DOCUMENTS	PRODUCT INFORMATION CENTER 1-800-522-6752	VOLTAGE RATING: -	DIMENSIONS: INCHES	TOLERANCES UNLESS OTHERWISE SPECIFIED: 0 PLC ±- 1 PLC ±- 2 PLC ±.015 3 PLC ±- 4 PLC ±- ANGLES ±-	CHK M ELLIS 26 JUN 95	26 JUN 95		NAME RECEPTACLE, 187 SERIES, FASTON™, PID6™, WIRE SIZE, 16-14 AWG			
FOR APPLICATION TOOLING INFORMATION	TOOLING ASSISTANCE CENTER 1-800-722-1111	CIRCULAR MIL AREA: -	MATERIAL BODY, BRASS .016 SLV, NYLON, COLOR, BLUE	FINISH BODY, TIN	APV B BARE 26 JUN 95		SIZE A3	CAGE CODE 00779	DRAWING NO 640918		
FOR ORDER ENTRY	1-800-526-5142				PRODUCT SPEC -		WEIGHT -	CUSTOMER DRAWING	SCALE NTS	SHEET 1 OF 1	REV G

AMP 1470-19 REV 09MAY94
 25 JAN 1996 10:33:12 AMP12368 <U128A>DEPT1132-U.DWG1132-U.RBY-U.FASTON-U.CUST