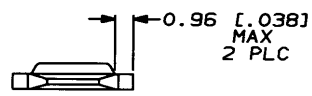
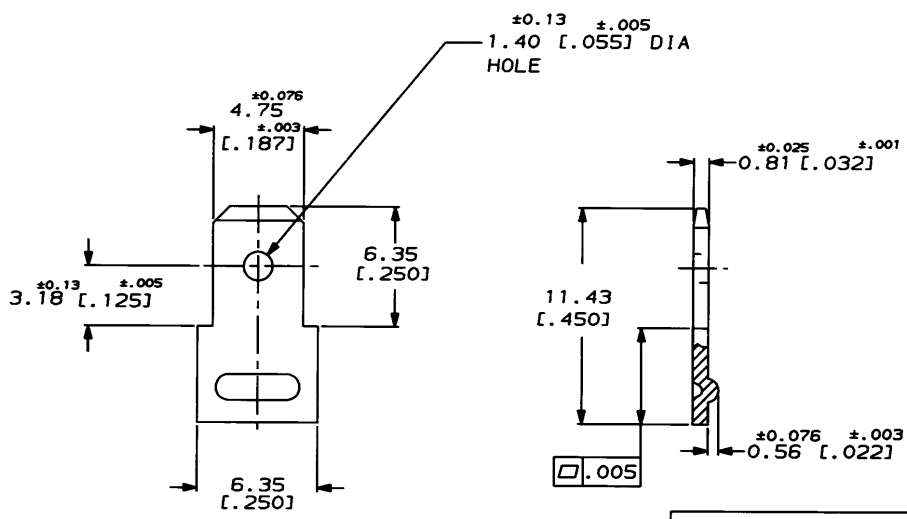


4  
 DRAWING MADE IN THIRD ANGLE PROJECTION  
 THIS DRAWING IS UNPUBLISHED. RELEASED FOR PUBLICATION  
 © COPYRIGHT 19 BY AMP INCORPORATED. ALL INTERNATIONAL RIGHTS RESERVED.

LOC	DIST	REVISIONS				
AF	50	ZONE	LTR	DESCRIPTION	DATE	APPO
		B		REL -1 PER 0097-94	3/11/94	JR/PD



1 SUPPLIED IN LOOSE PIECE.  
 2 NICKEL 0.00381 [0.00150] OVER COPPER  
 0.00127 [0.00050] MIN.



THIS DRAWING IS A CONTROLLED DOCUMENT FOR  
 AMP INCORPORATED. IT IS SUBJECT TO CHANGE  
 AND THE CONTROLLING ENGINEERING ORGANIZATION  
 SHOULD BE CONTACTED FOR THE LATEST REVISION.

DO NOT SCALE PRINT. UNLESS SPECIFIED DIMENSIONS IN MM (INCHES) TOLERANCES ON: 2 PLC DEC ± 0.25 (0.010) 3 PLC DEC ± - ANGLES ± -		DR 12/16/93 IN BUSH CHK 12/16/93 HS PERER APPO 12/16/93 P DESHWIS R REISER	63771-1 PART NO	
MATERIAL C.R. STEEL	FINISH NICKEL / COPPER	PRODUCT SPEC -	AMP AMP Incorporated Harrisburg, PA 17105-3608	
		APPLICATION SPEC -	NAME TAB, FASTON, 4.75 [0.187] SERIES	
		WEIGHT -	SIZE B	CARE CODE 00779
			SCALE 5:1	DRAWING NO C-63771
				SHEET 1 OF 1