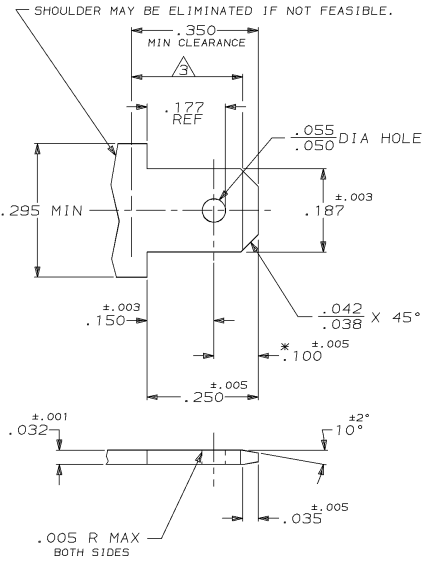


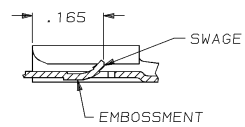
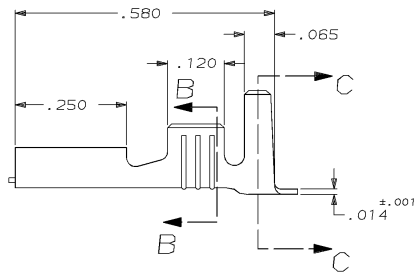
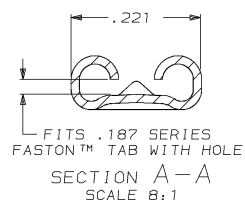
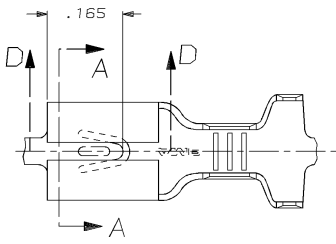
DRAWING MADE IN THIRD ANGLE PROJECTION  
 THIS DRAWING IS UNPUBLISHED. RELEASED FOR PUBLICATION .19  
 © COPYRIGHT 19 BY AMP INCORPORATED. ALL INTERNATIONAL RIGHTS RESERVED.

REVISIONS								
LOC	DIST	P	F	ZONE	LTR	DESCRIPTION	DATE	APPD
AF	50					E REV PER 0502-94	12/8/94	JR/JG

SUGGESTED MATING TAB



- 1 - MATL. 1/2 H BRASS OR NICKEL PL STEEL.
- 2 - NO BURRS PERMISSIBLE AT HOLE.
- 3 - MUST BE FLAT WITHIN .003 OVER THIS LENGTH.
- 4 - HOLE MUST BE SYMMETRICAL ABOUT TAB Q WITHIN 0.076 [.003]
- \* TO BE USED ONLY WHEN SHOULDER IS ELIMINATED.



1 CONTINUOUS STRIP ON REELS  
 TIN PL .000080 MIN THK PER MIL-T-10727A

TYPE	WIDTH	STRIP LENGTH ±.015	TYPE	WIDTH	±.002 HEIGHT	WIRE
F	.180	.188	F	.090	.077	14
					.066	16
					.059	18

.161-.196		18-14		63524-1	
INSUL RANGE		WIRE SIZE		PART NO	
DO NOT SCALE PRINT. UNLESS SPECIFIED DIMENSIONS IN INCHES TOLERANCES ON:		DR 1/3/90 JR RUTH		<b>AMP</b> AMP INCORPORATED Harrisburg, Pa. 17105	
1 PLC DEC ±		CHK 1/3/90 MS FEHER			
2 PLC DEC ±		APPD 1/3/90 J GILLESPIE			
3 PLC DEC ± .010		APPD 1/3/90 R KUZO		NAME	
ANGLES ±		PRODUCT SPEC		RECEPTACLE, FASTON™	
MATERIAL		APPLICATION SPEC		LOCK-ON, 4.75 [.187] SERIES	
TEMP 3 PHOS BRONZE		WEIGHT		SIZE	
FINISH		SCALE		CAGE CODE	
△		B:1		00779	
				DRAWING NO	
				63524	
				SHEET	
				1 OF 1	