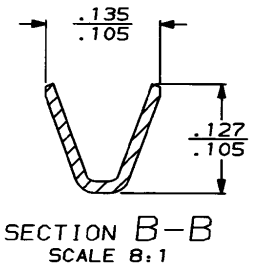
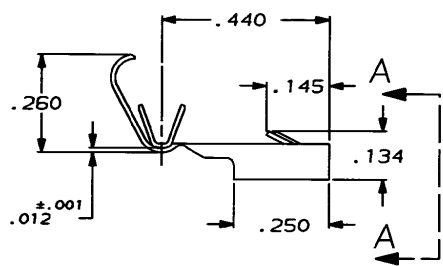
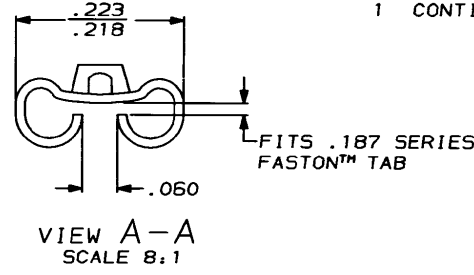
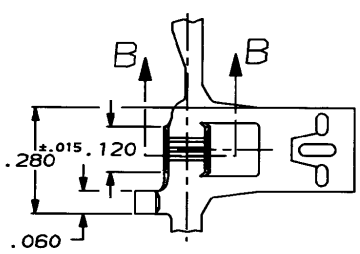


DRAWING MADE IN THIRD ANGLE PROJECTION

THIS DRAWING IS UNPUBLISHED. RELEASED FOR PUBLICATION, 19
 © COPYRIGHT 19 BY AMP INCORPORATED. ALL INTERNATIONAL RIGHTS RESERVED.

LOC	DIST	REVISIONS			
AF	50	P	F	ZONE	LTR
				C	REVISED AF-804B
					DATE
					9/3/92
					APPD
					JR



0	.140	.188	F	.090	.057	16
					.050	18
					.045	20
TYPE	WIDTH	STRIP LENGTH ±.015	TYPE	WIDTH	±.002 HEIGHT	WIRE
INSUL BARREL CRIMP			WIRE BARREL CRIMP			

.060-.110	20-16	.020	63509-1
INSULATION RANGE	WIRE SIZE	MATING TAB THK ±.001	PART NO
DO NOT SCALE PRINT. UNLESS SPECIFIED DIMENSIONS IN INCHES TOLERANCES ON: 2 P.L.C DEC ± .010 3 P.L.C DEC ± .010 ANGLES ± -	DR S/S/88 JR B/TH CHK S/S/88 RE F/88 APPD S/S/88 J GILLESPIE	AMP INCORPORATED Harrisburg, Pa. 17105	
MATERIAL #4H BRASS	APPD S/S/88 R 0/88	RECEPTACLE, FASTIN-FASTON, FLAG, .187 SERIES	
FINISH PRE-TIN .000030 MIN	APPLICATION SPEC -	SIZE B	PSCH NO 00779
	WEIGHT -	SCALE 4:1	DRAWING NO 63509
			SHEET 1 OF 1

AMP 1470-15 REV 3-87
 03 SEP 1992 09:32:00 AMP13469 <U5128A>DEPT121>DWG2121>U.FASTIN-ON>U.187-FL

CUSTOMER DRAWING