

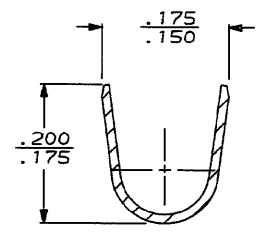
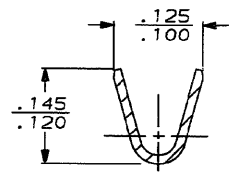
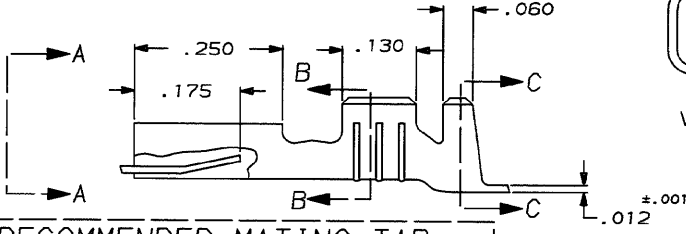
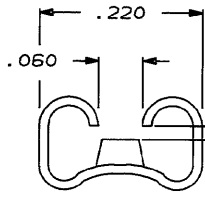
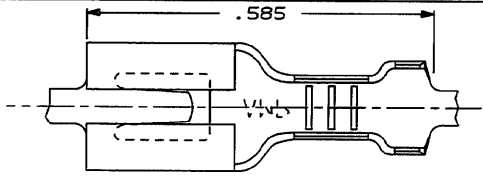
4 3 2 1

DRAWING MADE IN THIRD ANGLE PROJECTION

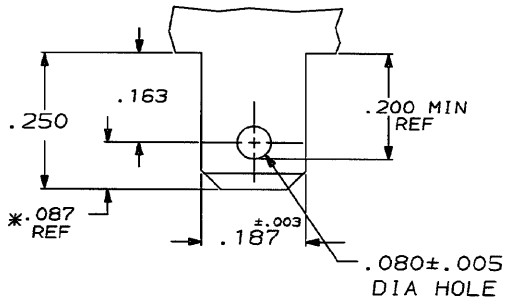
THIS DRAWING IS UNPUBLISHED. RELEASED FOR PUBLICATION 19

© COPYRIGHT 1970 BY AMP INCORPORATED, HARRISBURG, PA. ALL INTERNATIONAL RIGHTS RESERVED. AMP PRODUCTS MAY BE COVERED BY U.S. AND FOREIGN PATENTS AND/OR PATENTS PENDING.

LOC	DIST	P	F	ZONE	LTR	DESCRIPTION	DATE	APPROVED
AF	50					D	REV PER 0086-93	1/14/93 JR/JG



RECOMMENDED MATING TAB
MATL: 1/2 H BRASS OR NICKEL PL STL



* TO BE USED ONLY WHEN SHOULDER IS ELIMINATED

.090-.130		20-16	61939-1
INSULATION RANGE		WIRE SIZE	PART NO
AMP INCORPORATED Harrisburg, Pa. 17105			
NAME RECT, FASTON, LOCK-ON, .187 SERIES			
MATERIAL #4H PHOS BRONZE		SIZE B	FSCN NO 00779
FINISH		DRAWING NO 61939	
UNLESS OTHERWISE SPECIFIED DIMENSIONS ARE IN INCHES TOLERANCES ON: 2 PL DEC ± .001 3 PL DEC ± .015 ANGLES ± .5		SCALE NTS	SHEET 1 OF 1
DR 7/28/86 JK RUTH CHK 8/8/86 6 NETTER APPD 8/15/86 J GILLESPIE R RIZZO PRODUCT SPEC			
APPLICATION SPEC			
WEIGHT			

CUSTOMER DRAWING

AMP 1470-15 REV 10-84
14 APR 1983 15:11:25 AMPENG 45228183F0270-MERCH-ILLUS-88