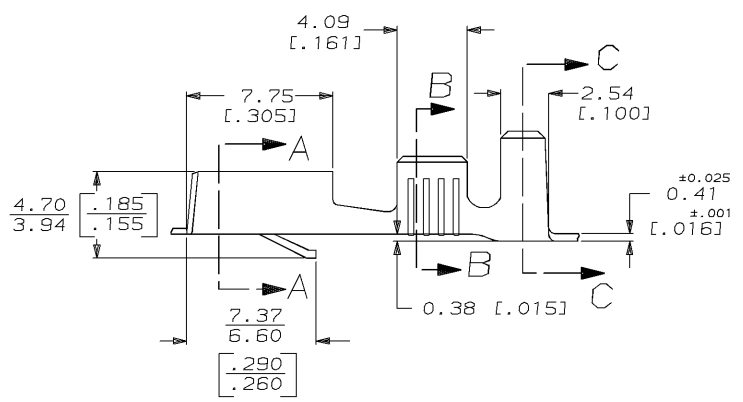
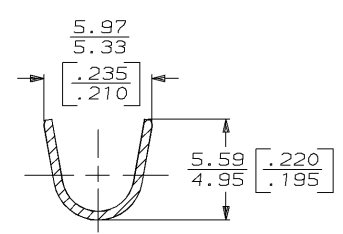
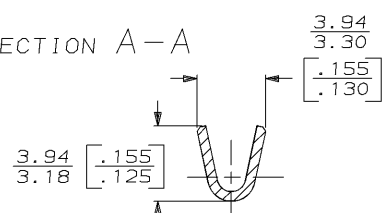
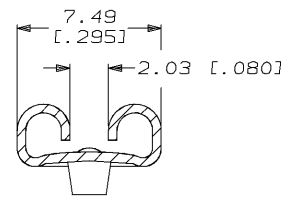
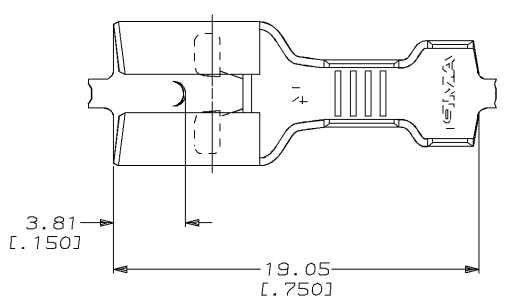


DRAWING MADE IN THIRD ANGLE PROJECTION

THIS DRAWING IS UNPUBLISHED. RELEASED FOR PUBLICATION, 19  
 © COPYRIGHT 19 BY AMP INCORPORATED. ALL INTERNATIONAL RIGHTS RESERVED.

LOC	DIST	REVISIONS				
P	F	ZONE	LTR	DESCRIPTION	DATE	APPD
AF	50	AG		REV PER 0710-0302-95	7/13/95	JR/JG

1 CONTINUOUS STRIP ON REELS.



2.54-4.32 DIA [.100-.170] DIA	0.8-2.0mm <sup>2</sup> [18-14] AWG	0.81 [.032]	60634-1
INSUL RANGE	WIRE SIZE	MATING TAB THK ±0.025 [.001]	PART NO
DO NOT SCALE PRINT. UNLESS SPECIFIED DIMENSIONS IN mm [INCHES] TOLERANCES ON: 2 PLC DEC ± 0.25 (.010) 3 PLC DEC ± - ANGLES ± -	DR 8/19/93 JR RTH CHK 8/19/93 NS FEHER APPD 8/19/93 J SILESPIE APPD 8/19/93 R REINER PRODUCT SPEC -	<b>AMP</b> AMP Incorporated Harrisburg, PA 17105-3608 NAME <b>RECEPTACLE, FASTIN-FASTON,                  6.35 [.250] SERIES</b>	
MATERIAL 4M BRASS	FINISH -	SIZE B	CAGE CODE 00779
	APPLICATION SPEC 114-2025	DRAWING NO C=60634	SCALE 5:1
	WEIGHT -	SHEET 1 OF 1	

THIS DRAWING IS A CONTROLLED DOCUMENT FOR AMP INCORPORATED. IT IS SUBJECT TO CHANGE AND THE CONTROLLING ENGINEERING ORGANIZATION SHOULD BE CONTACTED FOR THE LATEST REVISION.

AMP 1470-15 REV 3-92  
 13-JUL-95 14:43:23 amp13469 /ws/dept2121/dwg2121/u.fastin-on/u.250-str

CUSTOMER DRAWING