

4

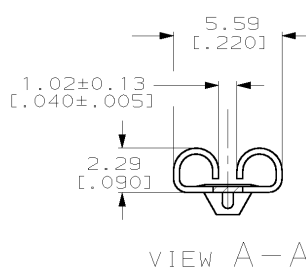
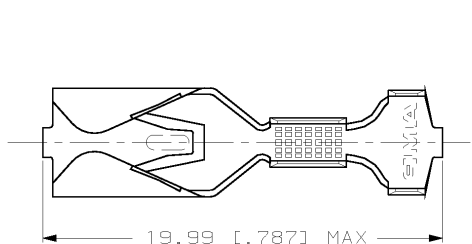
3

2

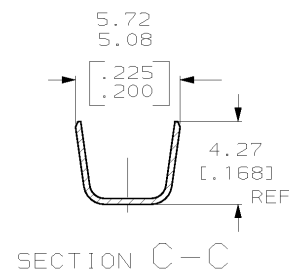
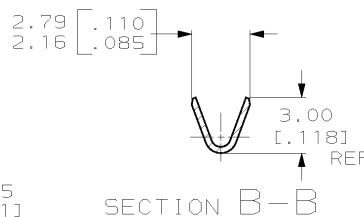
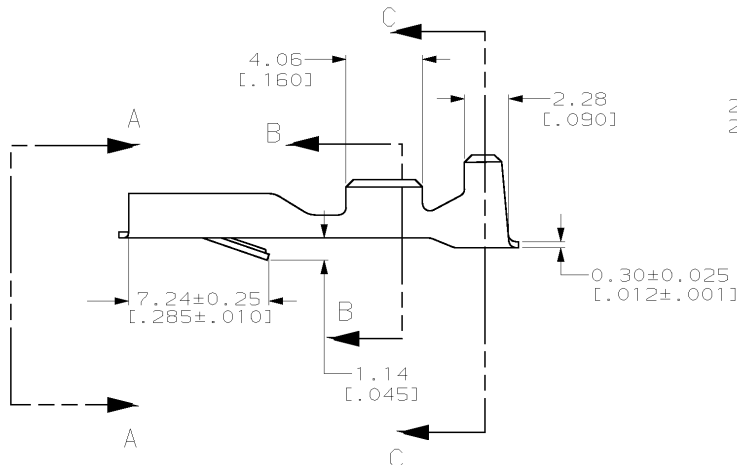
1

THIS DRAWING IS UNPUBLISHED. RELEASED FOR PUBLICATION .19
 © COPYRIGHT 19 BY AMP INCORPORATED. ALL RIGHTS RESERVED.

LOC	DIST	REVISIONS				
P	LTR	DESCRIPTION	DATE	DWN	APVD	
AF	50	0	DRAWN PER 0L10-0212-97	5/23/97	JR	JG



- 1 SUPPLIED IN LOOSE PIECE.
- 2 TO BE USED WITH 60434 AND HOUSING 480252.
- 3 MAY BE USED WITH INDIVIDUAL 4.75 X 0.51 [0.187 X 0.020] THK TAB.
- 4 WIRE SIZE IS [#20-#16] AWG.
- 5 INSULATION RANGE IS 2.29-3.30 [0.090-.130] DIA. OR TWO AT 2.79 [0.110] MAX.



60520-1
PART NO.

THIS DRAWING IS A CONTROLLED DOCUMENT.		DWN JR RUTH 5/23/97	AMP AMP Incorporated Harrisburg, PA 17105-3608
DIMENSIONS: MM (INCHES)		CHK MS FEHER 5/23/97	
TOLERANCES UNLESS OTHERWISE SPECIFIED:		APVD J GILLESPIE 5/23/97	NAME RECEPTACLE, FASTIN-FASTON, 4.75 [0.187] SERIES
0 PLC ±-	1 PLC ±-	PRODUCT SPEC	SIZE CAGE CODE DRAWING NO
2 PLC ±0.38 [0.015]	3 PLC ±-	APPLICATION SPEC	A3100779 C-60520
4 PLC ±-	ANGLES ±-	WEIGHT	RESTRICTED TO
MATERIAL H04 BRASS	FINISH PRE-TIN	CUSTOMER DRAWING	SCALE 5:1 SHEET 1 OF 1 REV 0