

4

3

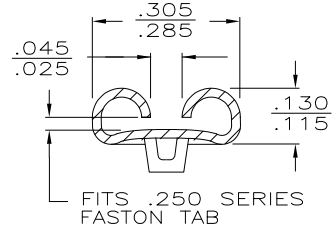
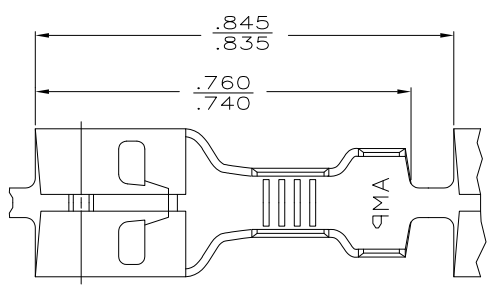
2

1

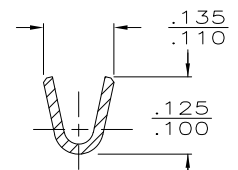
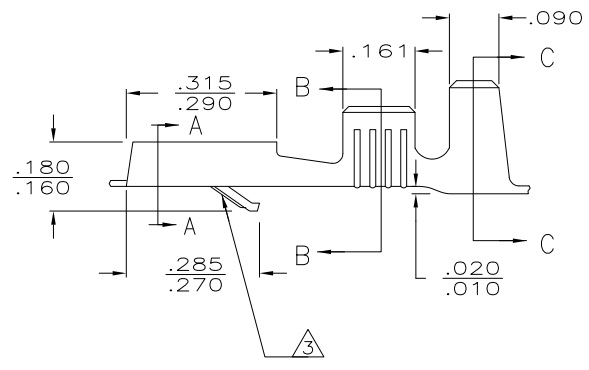
THIS DRAWING IS UNPUBLISHED. RELEASED FOR PUBLICATION  
 © COPYRIGHT - By - ALL RIGHTS RESERVED.

LOC	DIST	REVISIONS				
P	LTR	DESCRIPTION	DATE	DWN	APVD	
AF	50					
		AH1 REVISED PER ECO-11-004820	11MAR11	RK	HMR	

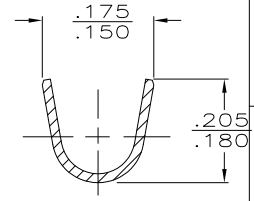
- 1 - CONTINUOUS STRIP ON REELS.
- 2 - FOREIGN PRODUCTION ONLY
- 3 - LANCE IN 1-60295-2 ONLY.
- 4 - INTERLEAVING PAPER
- 5 - PRELIMINARY - NOT FOR PRODUCTION



SECTION A-A



SECTION B-B



SECTION C-C

FINISH	INSULATION RANGE	WIRE SIZE	TAB THK	PART NO
TIN	.085-.125	22-18	.032 ±.001	60295-4
TIN	.085-.125	22-18	.032 ±.001	60295-2
NICKEL	.085-.125	22-18	.032 ±.001	60295-3
TIN	.085-.125	22-18	.032 ±.001	60295-2
-	.085-.125	22-18	.032 ±.001	60295-1

THIS DRAWING IS A CONTROLLED DOCUMENT.

DIMENSIONS: INCHES	TOLERANCES UNLESS OTHERWISE SPECIFIED:	DWN JR RUTH 4/28/86	<b>STE</b> TE Connectivity	
0 PLC ± -	1 PLC ± -	CHK G YETTER 4/28/86		
2 PLC ± -	3 PLC ± .015	APVD R KUZO 4/28/86	NAME .250 SERIES FASTON - FASTON RECEPTACLE	
4 PLC ± -	ANGLES ± -	PRODUCT SPEC -	SIZE CAGE CODE DRAWING NO RESTRICTED TO	
MATERIAL .012 BRASS	FINISH SEE ABOVE	WEIGHT -	A3 00779 C-60295	-
CUSTOMER DRAWING			SCALE 1:1	SHEET 1 OF 1 REV AH1