

4

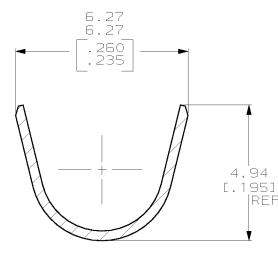
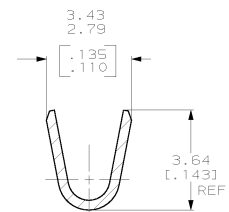
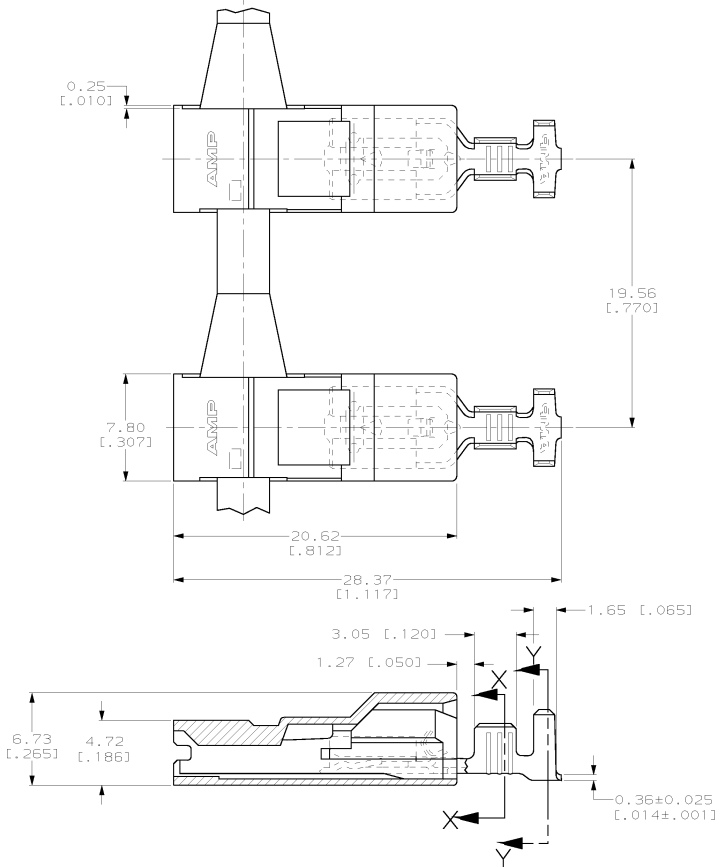
3

2

1

THIS DRAWING IS UNPUBLISHED.  
 RELEASED FOR PUBLICATION  
 BY AMP INCORPORATED. ALL RIGHTS RESERVED.

LOC	DIST	REVISIONS					
AF	50	F	LTR	DESCRIPTION	DATE	ENR	APPD
		C		REV PER 063A-0646-01		OBMAR02	JR JH



- 1 WIRE SIZE IS [#18-#14] AWG.
- 2 INSULATION RANGE IS 2.79-4.57 [0.110-.180] DIA.  
 2.79-3.56 [0.110-.140] DIA - CRIMP WIDTH 4.57 [0.180], F TYPE  
 3.56-4.57 [0.140-.180] DIA - CRIMP WIDTH 4.57 [0.180], O TYPE
- 3 MATING TAB THK TO BE 0.51±0.025 [0.020±.001].

THIS DRAWING IS A CONTROLLED DOCUMENT.		DWG. NO.	2470300	DATE	06/03/00
DRAWN BY		J.D. RUTH	2470300	DATE	06/03/00
CHECKED BY		F. FECHER	2470300	DATE	06/03/00
DESIGNED BY		J. BLUMHIL	2470300	DATE	06/03/00
TERMINAL / MATERIAL		0.002032 [0.00080] MIN TIN	521271-2		
		-	521271-1		
			PART NO.		
TERMINAL / MATERIAL		AMP Incorporated Harrisburg, PA 17105-3608			
ASSEMBLY, RECEPT, POSI-LOCK, ULTRA-POD, 4.75 [0.187] SERIES					
MATERIAL - H05 BRASS		TERMINAL - SEE TABLE		RESTRICTED TO	
HOUSING - 6/8 W/LOW V2		HOUSING - NATURAL		-	
CUSTOMER DRAWING		SCALE 5:1		SHEET 1 OF 1 REV C	