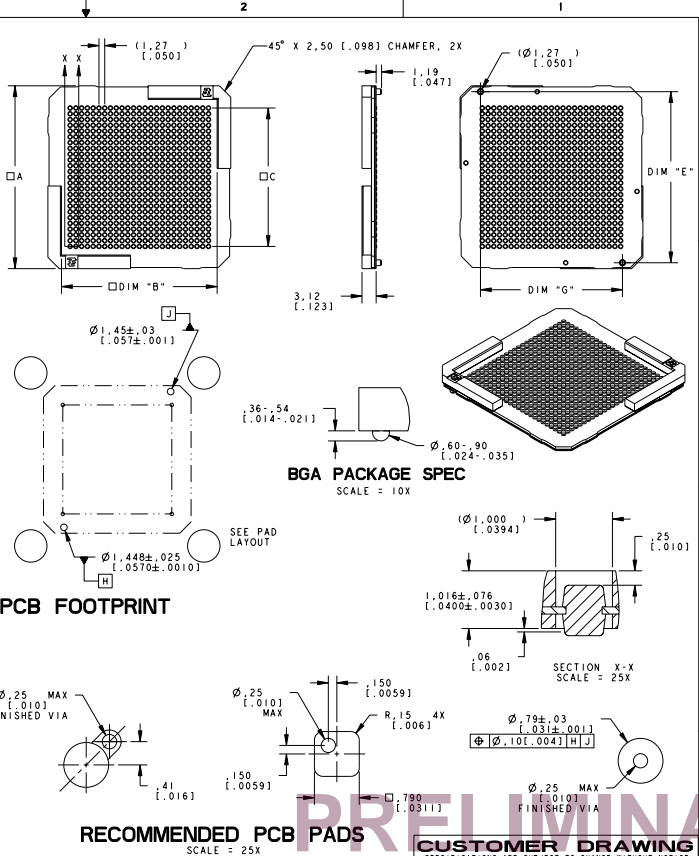


MATRIX BGA SOCKET (1,27mm)									
PART NO.	NO. OF CONTACTS	GRID	DIM A	DIM B	DIM C	DIM D	DIM E	DIM G	LOAD
1640320-1	256	16X16	28.27 (1.131)	22.27 (.877)	19.05 (.750)	38.10 (1.500)	25.67 (1.011)	19.27 (.759)	256.0 LBS
1640320-2	289	17X17	30.27 (1.192)	24.27 (.954)	20.00 (.787)	39.10 (1.539)	27.67 (1.089)	21.27 (.837)	296.7 LBS
1640320-3	324	18X18	32.27 (1.270)	26.27 (1.034)	21.00 (.827)	40.10 (1.578)	30.17 (1.188)	23.27 (.916)	328.8 LBS
1640320-4	361	19X19	34.27 (1.349)	28.27 (1.113)	22.00 (.866)	41.10 (1.615)	32.17 (1.267)	25.27 (.985)	368.9 LBS
1640320-5	400	20X20	36.27 (1.428)	30.27 (1.192)	23.00 (.909)	42.10 (1.653)	34.17 (1.346)	27.27 (1.074)	408.0 LBS
1640320-6	441	21X21	38.27 (1.507)	32.27 (1.270)	24.00 (.945)	43.10 (1.691)	36.17 (1.425)	29.27 (1.153)	448.1 LBS
1640320-7	484	22X22	40.27 (1.586)	34.27 (1.349)	25.00 (.984)	44.10 (1.729)	38.17 (1.504)	31.27 (1.232)	488.2 LBS
1640320-8	529	23X23	42.27 (1.665)	36.27 (1.428)	26.00 (1.022)	45.10 (1.767)	40.17 (1.583)	33.27 (1.311)	528.3 LBS
1640320-9	576	24X24	44.27 (1.744)	38.27 (1.507)	27.00 (1.061)	46.10 (1.805)	42.17 (1.662)	35.27 (1.390)	578.4 LBS
1-1640320-0	625	25X25	46.27 (1.823)	40.27 (1.586)	28.00 (1.100)	47.10 (1.843)	44.17 (1.741)	37.27 (1.469)	628.5 LBS
1-1640320-1	676	26X26	48.27 (1.902)	42.27 (1.665)	29.00 (1.138)	48.10 (1.881)	46.17 (1.820)	39.27 (1.548)	678.6 LBS
1-1640320-2	729	27X27	50.27 (1.981)	44.27 (1.744)	30.00 (1.176)	49.10 (1.919)	48.17 (1.909)	41.27 (1.627)	728.7 LBS
1-1640320-3	784	28X28	52.27 (2.060)	46.27 (1.823)	31.00 (1.215)	50.10 (1.957)	50.17 (1.988)	43.27 (1.706)	778.8 LBS
1-1640320-4	841	29X29	54.27 (2.139)	48.27 (1.902)	32.00 (1.253)	51.10 (2.000)	52.17 (2.067)	45.27 (1.785)	828.9 LBS
1-1640320-5	900	30X30	56.27 (2.218)	50.27 (1.981)	33.00 (1.291)	52.10 (2.048)	54.17 (2.146)	47.27 (1.864)	879.0 LBS
1-1640320-6	961	31X31	58.27 (2.297)	52.27 (2.060)	34.00 (1.330)	53.10 (2.086)	56.17 (2.225)	49.27 (1.943)	929.1 LBS
1-1640320-7	1024	32X32	60.27 (2.376)	54.27 (2.139)	35.00 (1.368)	54.10 (2.124)	58.17 (2.304)	51.27 (2.022)	979.2 LBS
1-1640320-8	1089	33X33	62.27 (2.455)	56.27 (2.218)	36.00 (1.407)	55.10 (2.162)	60.17 (2.383)	53.27 (2.101)	1029.3 LBS
1-1640320-9	1156	34X34	64.27 (2.534)	58.27 (2.297)	37.00 (1.445)	56.10 (2.200)	62.17 (2.462)	55.27 (2.180)	1079.4 LBS
2-1640320-0	1225	35X35	66.27 (2.613)	60.27 (2.376)	38.00 (1.484)	57.10 (2.238)	64.17 (2.541)	57.27 (2.259)	1129.5 LBS
2-1640320-1	1296	36X36	68.27 (2.692)	62.27 (2.455)	39.00 (1.522)	58.10 (2.276)	66.17 (2.620)	59.27 (2.338)	1179.6 LBS
2-1640320-2	1369	37X37	70.27 (2.771)	64.27 (2.534)	40.00 (1.561)	59.10 (2.314)	68.17 (2.709)	61.27 (2.417)	1229.7 LBS
2-1640320-3	1444	38X38	72.27 (2.850)	66.27 (2.613)	41.00 (1.600)	60.10 (2.352)	70.17 (2.788)	63.27 (2.496)	1279.8 LBS
2-1640320-4	1521	39X39	74.27 (2.929)	68.27 (2.692)	42.00 (1.638)	61.10 (2.390)	72.17 (2.867)	65.27 (2.575)	1329.9 LBS
2-1640320-5	1600	40X40	76.27 (3.008)	70.27 (2.771)	43.00 (1.677)	62.10 (2.428)	74.17 (2.946)	67.27 (2.654)	1380.0 LBS

ALTERNATE SIZES									
PART NO.	NO. OF CONTACTS	GRID	DIM A	DIM B	DIM C	DIM D	DIM E	DIM G	LOAD
2-1640320-5	324	18X18	32.27 (1.270)	26.27 (1.034)	21.00 (.827)	40.10 (1.578)	30.17 (1.188)	23.27 (.916)	328.8 LBS
2-1640320-6	441	21X21	38.27 (1.507)	32.27 (1.270)	24.00 (.945)	43.10 (1.691)	36.17 (1.425)	29.27 (1.153)	448.1 LBS
2-1640320-7	576	24X24	44.27 (1.744)	38.27 (1.507)	27.00 (1.061)	46.10 (1.805)	42.17 (1.662)	35.27 (1.390)	578.4 LBS
2-1640320-8	729	27X27	50.27 (1.981)	44.27 (1.744)	30.00 (1.176)	49.10 (1.919)	48.17 (1.909)	41.27 (1.627)	728.7 LBS

SPECIFICATIONS:
MATERIALS:
CONDUCTIVE COLUMN: HVC-125.
INSULATOR: POLYIMIDE.
FRAME: 94V-0 ULTEM.
MECHANICAL:
MPI TOTAL LOAD: SEE CHART
APPLICATION:
THIS SOCKET IS DESIGNED FOR COMPRESSION MOUNT.
FOR MORE INFORMATION REFERENCE MPI APPLICATION GUIDE,
P/N 1640905 (BGA).
NOTES: UNLESS OTHERWISE SPECIFIED
1. INTERPRET DRAWING PER ASME Y14.5M-1994.
2. DOES NOT INCLUDE VESTIGES OR SURFACE ENRICHMENT.
3. THE SOLDER MASK ON THE PCB ARRAY MUST BE NO MORE THAN 15 MICROMETERS THICK.
4. STANDARD CHEMICAL GOLD PLATING IS ACCEPTABLE FOR PCB FAB IN THE USE OF THIS SOCKET.
5. RoHS COMPLIANT AND CERTIFIED.



REVISIONS: 1. REV. 1-16-03 2. REV. 3-16-03 3. REV. 3-16-03 4. REV. 3-16-03	DATE: 1-16-03 DATE: 3-16-03 DATE: 3-16-03 DATE: 3-16-03	DRAWN BY: L. SILVA ENGINEER W. ALDEN CHECKER	DATE: 1-28-03 DATE: 3-7-03 PROJECT: SYSTEM	MATERIAL: N/A FINISH: N/A	NORTH ATTLEBORO, MASSACHUSETTS 01760 Tyco Electronics CUSTOMER DRAWING, SOCKET ASSEMBLY 1.27mm BGA SEE CHART C-1640320
--	--	---	--	------------------------------	--

PRELIMINARY