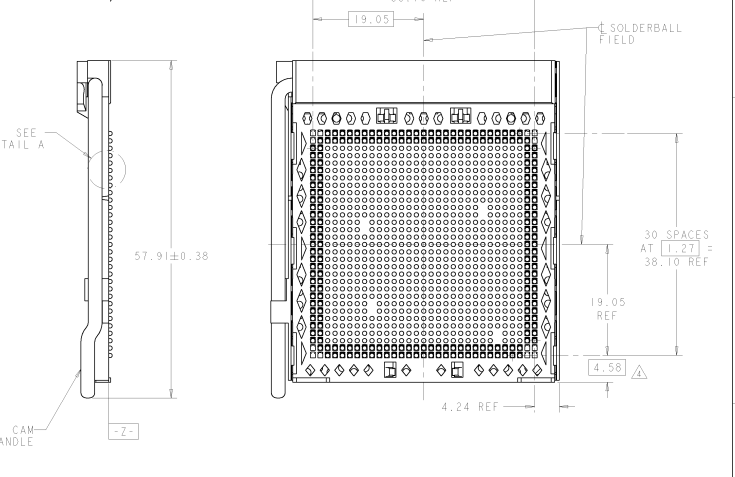


- △ HOUSING: HIGH TEMPERATURE THERMOPLASTIC, UL94V-0, BLACK.
- △ COVER: HIGH TEMPERATURE THERMOPLASTIC, UL94V-0, NATURAL;
- △ CONTACT: COPPER ALLOY; HANDLE: STAINLESS STEEL.
- △ CONTACT: 0.38µm MIN GOLD IN CONTACT AREA, OVER 1.27µm MIN NICKEL ALL OVER.
- △ ACTUATION DIRECTION AS SHOWN 0.38 NOMINAL PROCESSOR MOVEMENT.
- △ THIS DIMENSION FOR FRONT ROW SOLDER BALLS.
- △ PROCESSOR OUTLINE.
- 6. SOCKET IS DESIGNED FOR SINGLE SIDE PCB APPLICATION ONLY.
- △ SOCKET FINAL HEIGHT FROM PC BOARD TO PROCESSOR SEATING SURFACE IS, 4.35 MAX BEFORE SOLDER REFLOW AND 4.20 MAX AFTER SOLDER REFLOW.
- △ PICK-UP TAPE COVERING ALL CIRCUIT HOLES PROVIDED FOR PICK AND PLACE EQUIPMENT. IMPORTANT: REMOVE TAPE BEFORE INSTALLING PROCESSOR.
- △ POCKET RECESS.
- △ DATE CODE MARKINGS APPROXIMATE AREA SHOWN.
- △ APPROXIMATE CENTER OF GRAVITY OF SOCKET ASSEMBLY
- △ PC BOARD LAYOUTS FOR 1888060-2/-6, 1888060-3 AND -4 ARE EACH DIFFERENT THAN 1888060-1 IN AREAS CIRCLED.
- △ PART NUMBER HAS BEEN OBSOLETE.
- △ CONTACT: 0.05µm MIN GOLD IN CONTACT AREA, OVER 1.27µm MIN NICKEL ALL OVER.
- △ OBSOLETE PARTS: OBSOLETE CIS STREAMLINING PER D.RENAUD/D.SINISI

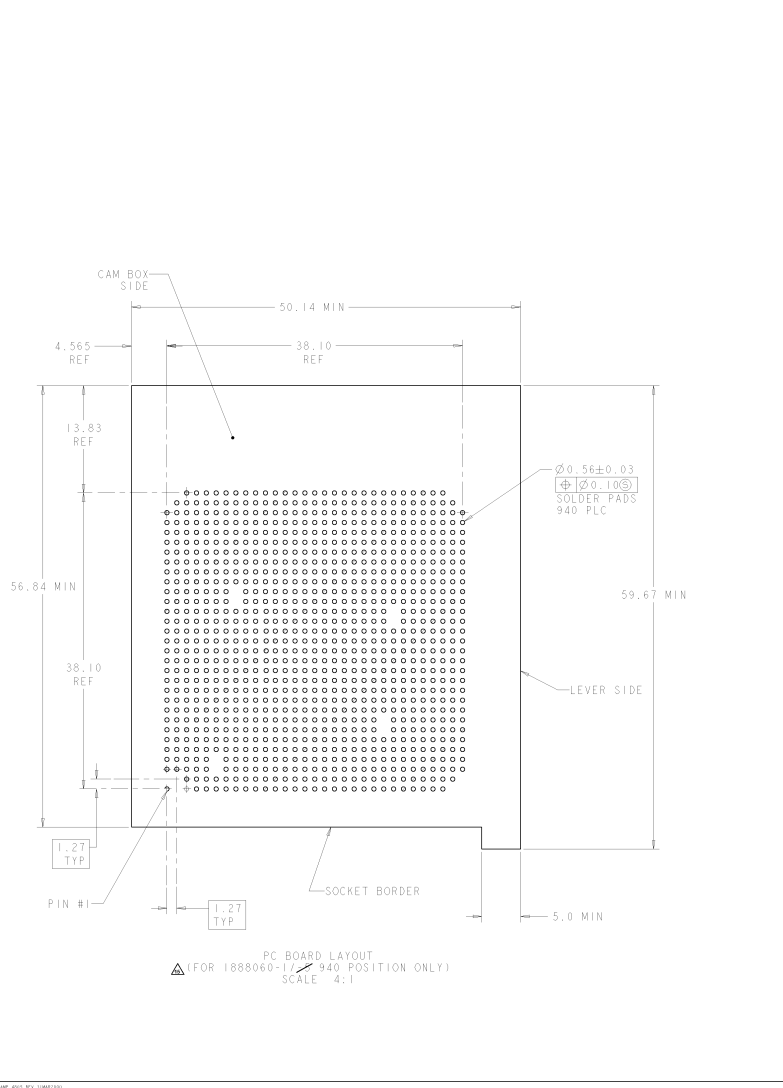


OBsolete

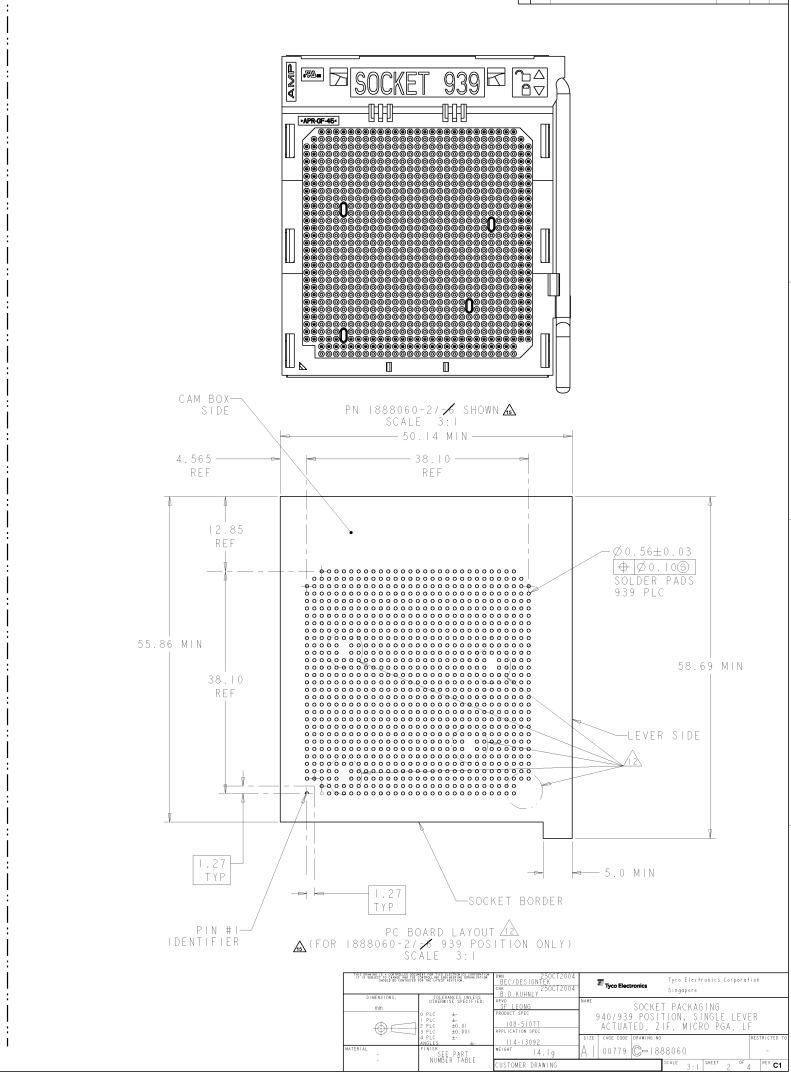
SEE VIEW AND PCB LAYOUT, SH 3	-	1888060-4
SEE VIEW AND PCB LAYOUT, SH 3	-	1888060-5
SEE VIEW AND PCB LAYOUT, SH 2	1888060-6	1888060-2
AS SHOWN, SH 1 AND PCB LAYOUT, SH 2	1888060-5	1888060-1
DESCRIPTION	PART NUMBER	PART NUMBER

INTERNETION	en	DATE	1998-08-10
REV. NO.	1	DESCRIPTION	SOCKET 940
DESIGNER	T. R. J.	DATE	1998-08-10
CHECKED	K. K. AEO	DESCRIPTION	940 940 POSITION, SINGLE LEVER ACTUATED, 21E MICRO PGA, LF
APPROVED	K. K. AEO	DATE	1998-08-10
SCALE	1:1	DESCRIPTION	SOCKET 940
WEIGHT	14.1g	DATE	1998-08-10
NUMBER TABLE	1	DESCRIPTION	SOCKET 940

8	7	6	5	4	3	2	1
REVISED FOR POSITIONING		REVOLUTIONS					
BY		DATE	BY	DATE	BY	DATE	BY
BY TAO ELECTRONICS CORPORATION, 111 YONGE STREET		SEE SHEET 1					



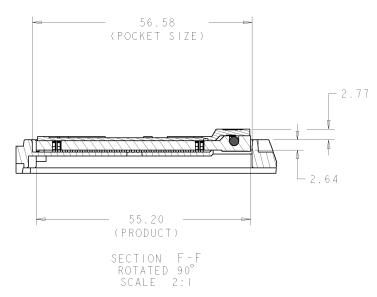
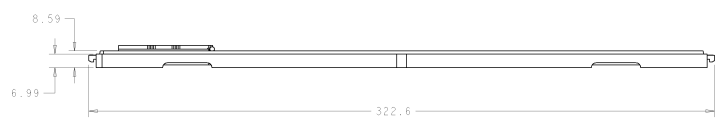
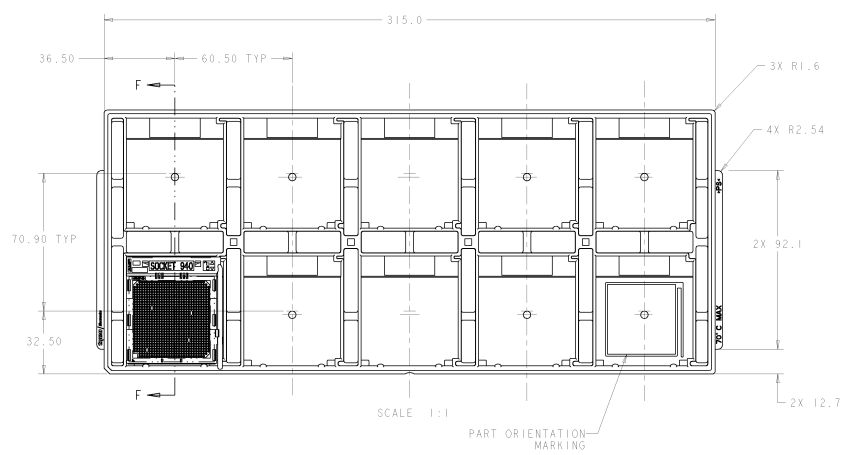
8	7	6	5	4	3	2	1
REVISED FOR POSITIONING		REVOLUTIONS					
BY		DATE	BY	DATE	BY	DATE	BY
BY TAO ELECTRONICS CORPORATION, 111 YONGE STREET		SEE SHEET 1					



WWW.TAOELECTRONICS.COM TAO ELECTRONICS CORPORATION 111 YONGE STREET TORONTO, ONTARIO M5C 1S5 CANADA		SOCKET 939 940/939 POSITION, SINGLE LEVER ACTIVATED, TIE MICRO PGB, LF		TAO Electronics Corporation Singapore	
PART NO. 188-51077	QTY. 14,100	DATE 14.1g	REV. A	DRAWN BY 00778	CHECKED BY 1888060
MATERIAL SEE PART NUMBER TABLE		CUSTOMER DRAWING		SHEET 3:1 OF 2	

8	7	6	5	4	3	2	1
PARTS LIST		REVISED FOR FUNCTION					
BY: [Signature]		BY: [Signature]					

REV	DATE	DESCRIPTION	BY	CHK	APP
1					
2		REVISED FOR FUNCTION			
3		REVISED FOR FUNCTION			



10/10/2014 10:00:00 AM 10/10/2014 10:00:00 AM		10/10/2014 10:00:00 AM 10/10/2014 10:00:00 AM		Tyo Electronics Tyo Electronics Corporation Singapore	
PART NO: 0012004 REV: 3 DATE: 10/10/2014 TIME: 10:00:00 AM		PART NO: 0012004 REV: 3 DATE: 10/10/2014 TIME: 10:00:00 AM		PART NO: 0012004 REV: 3 DATE: 10/10/2014 TIME: 10:00:00 AM	
MATERIAL: STAINLESS STEEL		MATERIAL: STAINLESS STEEL		MATERIAL: STAINLESS STEEL	
FINISH: POLISHED		FINISH: POLISHED		FINISH: POLISHED	
CUSTOMER DRAWING:		CUSTOMER DRAWING:		CUSTOMER DRAWING:	
ACTUATED, ZIF, MICRO PGA		ACTUATED, ZIF, MICRO PGA		ACTUATED, ZIF, MICRO PGA	
0012004		0012004		0012004	
10/10/2014		10/10/2014		10/10/2014	
10:00:00 AM		10:00:00 AM		10:00:00 AM	