

4

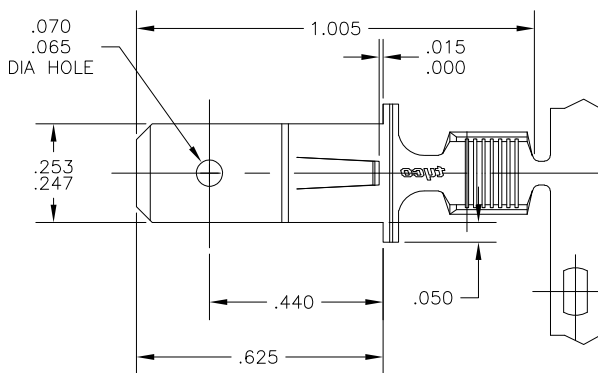
3

2

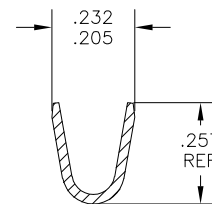
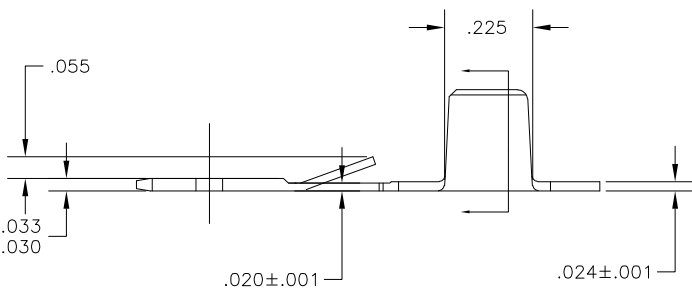
1

THIS DRAWING IS UNPUBLISHED. RELEASED FOR PUBLICATION  
 © COPYRIGHT - BY TYCO ELECTRONICS CORPORATION. ALL RIGHTS RESERVED.

LOC	DIST	REVISIONS			
P	LTR	DESCRIPTION	DATE	DWN	APVD
A1		REL PER ECR 06-028712	08DEC06	JR	KR



- CONTINUOUS STRIP ON REELS
- WIRE SIZE 7,000 - 13,000 CMA
- CRIMP INFO: .180 WIDTH, F TYPE  
 CRIMP HT (±.002) = (TOTAL CMA + 22,200)/304,500



1742266-1

PART NO

THIS DRAWING IS A CONTROLLED DOCUMENT.		DWN jr_ruth 11APR05	Tyco Electronics Corporation Harrisburg, Pa 17105-3608	
DIMENSIONS: INCHES	TOLERANCES UNLESS OTHERWISE SPECIFIED:	CHK K RANDOLPH 11APR05	APVD K RANDOLPH 11APR05	
	0 PLC ± -	NAME TAB, FASTIN-FASTON, AMPLIVAR, .250 SERIES		RESTRICTED TO
	1 PLC ± -	APPLICATION SPEC 114-2146		SIZE A3
	2 PLC ± -	WEIGHT -		CAGE CODE 00779
	3 PLC ± .010	DRAWING NO 1742266		DRAWING NO 1742266
	4 PLC ± -	CUSTOMER DRAWING		SCALE 4:1
	ANGLES ± 5°	MATERIAL 082 BRASS		SHEET 1 OF 1
	FINISH .000080 MIN TIN			REV A1

AMP 1470-19 REV 31MAR2000