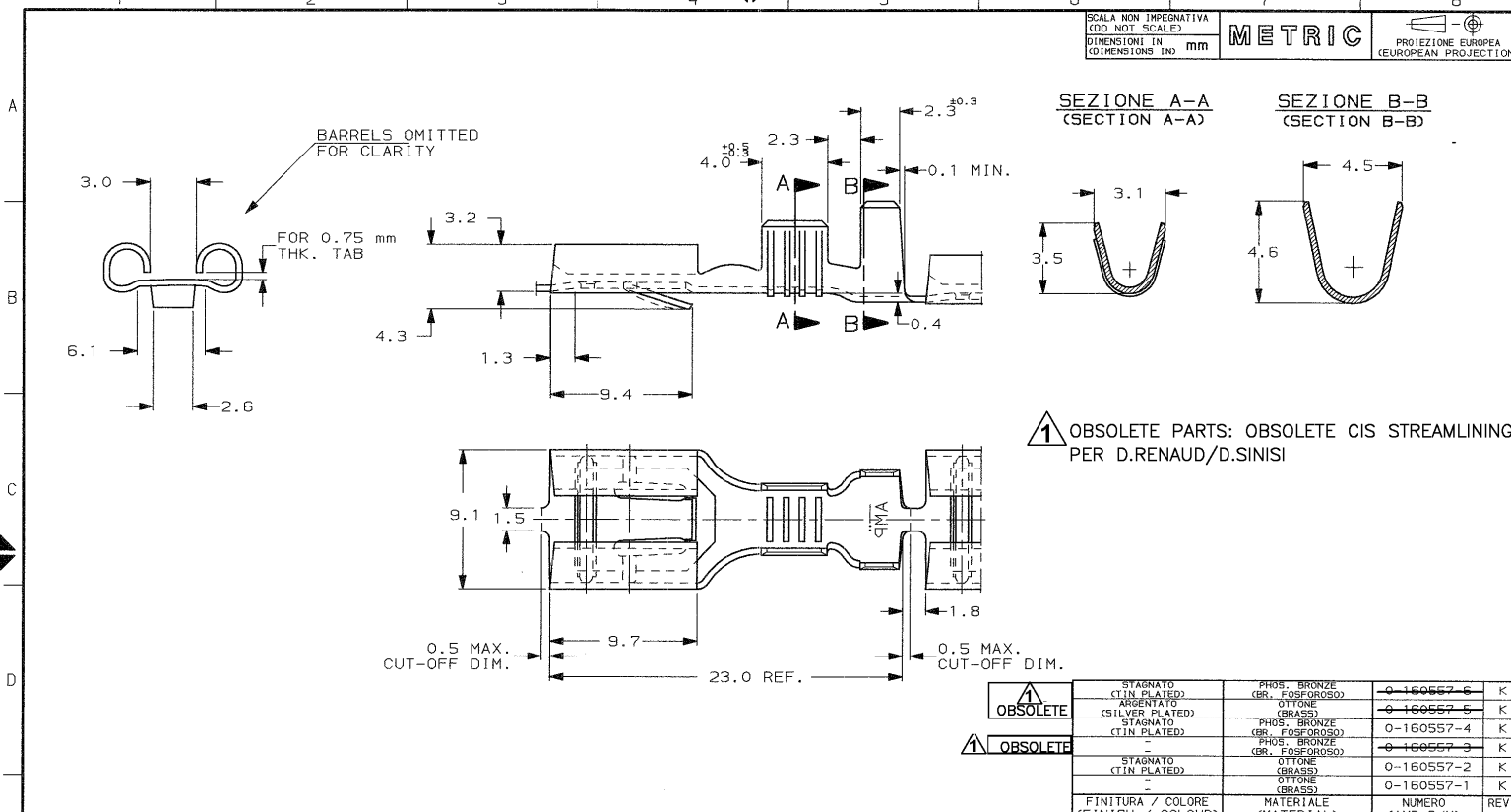


SCALA NON IMPEGNATIVA  
(DO NOT SCALE)  
DIMENSIONI IN  
(DIMENSIONS IN) mm

**METRIC**

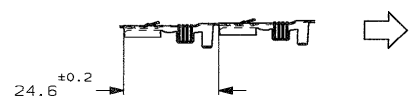
PROIEZIONE EUROPEA  
(EUROPEAN PROJECTION)



**⚠ OBSOLETE PARTS: OBSOLETE CIS STREAMLINING PER D.RENAUD/D.SINISI**

<b>⚠ OBSOLETE</b>	STAGNATO (TIN PLATED)	PHOS. BRONZE (GR. FOSFOROSO)	0-160557-6	K
	ARGENTATO (SILVER PLATED)	OTTONE (BRASS)	0-160557-5	K
<b>⚠ OBSOLETE</b>	STAGNATO (TIN PLATED)	PHOS. BRONZE (GR. FOSFOROSO)	0-160557-4	K
	OTTONE (BRASS)	PHOS. BRONZE (GR. FOSFOROSO)	0-160557-3	K
	OTTONE (BRASS)	OTTONE (BRASS)	0-160557-2	K
	-	OTTONE (BRASS)	0-160557-1	K
	FINITURA / COLORE (FINISH / COLOUR)	MATERIALE (MATERIAL)	NUMERO (AMP P/N)	REV.

**STATO DI FORNITURA - SCALA 1:1**  
(SUPPLY CONDITION - SCALE 1:1)



SENSO DI USCITA DEL TERMINALE DALLA BOBINA  
(DIRECTION OFF TOP OF REEL)

**CUSTOMER DWG. FOR REFERENCE ONLY**      **DISEGNO PER CLIENTE SOLO PER RIFERIMENTO**

THIS DRAWING IS UNPUBLISHED	RELEASE FOR PUBLICATION	19
© COPYRIGHT 19 BY AMP INCORPORATED, HARRISBURG, PA. ALL INTERNATIONAL RIGHT RESERVED. AMP PRODUCTS MAY BE COVERED BY U.S. AND FOREIGN PATENT AND/OR PATENT PENDING.		
TOLLERANZE, SE NON DIVERSAMENTE SPECIFICATO	DIAM. ISOLANTE (INS. DIA. RANGE)	RANGO FILE (WIRE RANGE) mm2
± 0.3	2.3-3.3	0.5-1.5
ANGOLI (ANGLES) ± 2°	SCALA (SCALE) 4:1	
<b>AMP</b> AMP ITALIA S.p.A. Corso F.lli Cervi, 15 COLLENO (TORINO)		
DIS. H. YAALI (DR.) 11 MAY 99	DESCRIZIONE (DESCRIPTION) FASTIN-FASTON Connector	
CONT. C. TARTARI (CONTR.) 11 MAY 99	.312" sr. REC. CONTACT	
REV. K1 ET00-0269-01 K REVISIO & REDRAWN ET00-0221-03 REV. REVISION RECORD	LOC. SIZE NUMERO (DWG NO)	REV. FOLIO (SHEET)
DIS. DATA (DATE)	IA3 C-160557	K2 1 01 1

K2	REVISED PER ECO-09-026346	KK	00000
K1	REVISED ET00-0269-01	H. Y.	01 27 99
K	REVISED & REDRAWN ET00-0221-03	H. Y.	02 24 99
REV.	REVISION RECORD	DIS. DATA (DATE)	APP. (APP.)

DISTRIBUZIONE (DISTRIBUTION)