

4

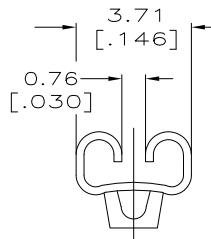
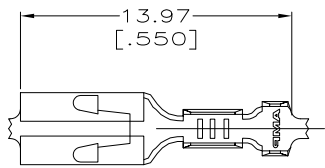
3

2

1

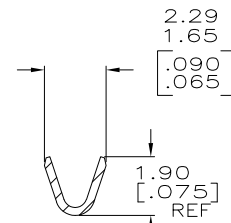
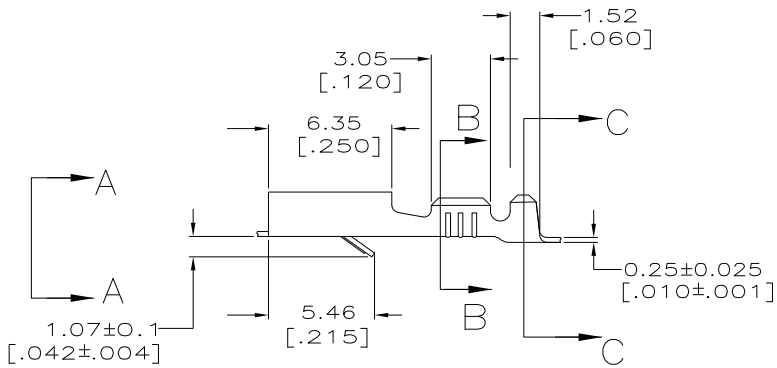
THIS DRAWING IS UNPUBLISHED. RELEASED FOR PUBLICATION
 © COPYRIGHT - By - ALL RIGHTS RESERVED.

LOC	DIST	REVISIONS				
P	LTR	DESCRIPTION	DATE	DWN	APVD	
AF	50					
	J3	REVISED PER ECO-11-005027	11MAR11	RK	HMR	

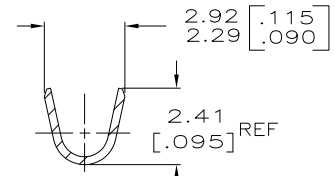


VIEW A-A
SCALE 8:1

- 1 CONTINUOUS STRIP ON REELS.
- 2 MATING TAB THK TO BE 0.81 ± 0.025 [.032±.001].
- 3 WIRE SIZE IS [#24-#20] AWG.
- 4 INSULATION RANGE IS 1.27-2.03 [.050-.080] DIA.



SECTION B-B
SCALE 8:1



SECTION C-C
SCALE 8:1

OBSOLETE

-	1217281-3
PRE-TIN	1217281-2
0.002032 [.000080]	1217281-1
MIN TIN	
FINISH	PART NO.

F	2.29 [.090]	3.96 [.156]	F	1.40 [.055]	1.02 [.040] [#20]	0.91 [.036] [#22]	0.84 [.033] [#24]
TYPE	WIDTH	STRIP LENGTH ±0.38 ±.015	TYPE	WIDTH	±.051 [±.002] HEIGHT	WIRE	
INSUL BARREL CRIMP		WIRE BARREL CRIMP					

THIS DRAWING IS A CONTROLLED DOCUMENT.

DIMENSIONS: mm[INCHES]	TOLERANCES UNLESS OTHERWISE SPECIFIED:
0 PLC ± -	1 PLC ± -
2 PLC ± 0.38 [.015]	3 PLC ± -
4 PLC ± -	ANGLES ± -
MATERIAL: H04 BRASS	FINISH: SEE TABLE

DWN: JR RUTH 29NOV99	CHK: MS FEHER 29NOV99	APVD: D BRATINA 29NOV99	NAME: STE TE Connectivity
APPLICATION SPEC: 114-2065			RECEPTACLE, FASTIN-FASTON, 2.79 [.110] SERIES
WEIGHT: -	SIZE: A3	CAGE CODE: 00779	DRAWING NO: 1217281
CUSTOMER DRAWING			RESTRICTED TO: -
SCALE: 5:1			SHEET: 1 OF 1 REV: J3