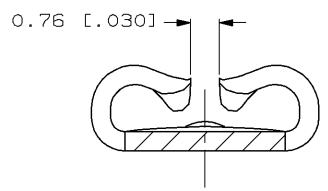
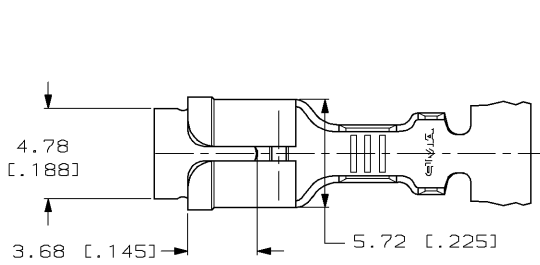


DRAWING MADE IN THIRD ANGLE PROJECTION

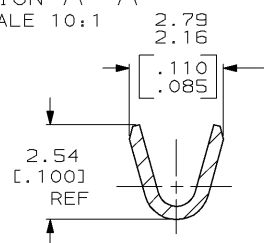
THIS DRAWING IS UNPUBLISHED. RELEASED FOR PUBLICATION, 19 .  
 © COPYRIGHT 19 BY AMP INCORPORATED. ALL INTERNATIONAL RIGHTS RESERVED.

LOC	DIST	ZONE	LTR	REVISIONS	DATE	APPD
AF	50			REL PER 0G1A-0258-98	7/29/98	JR/JG

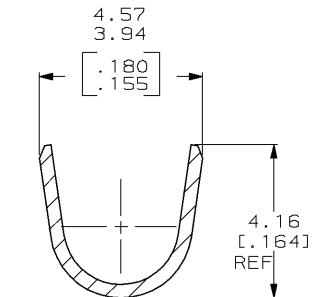
- CONTINUOUS STRIP ON REELS.
- MATING TAB THK TO BE 0.508±0.025 [.020±.001].
- WIRE SIZE IS [#22-#18] AWG.
- INSUL. RANGE IS 2.29-3.30 [.090-.130] DIA.



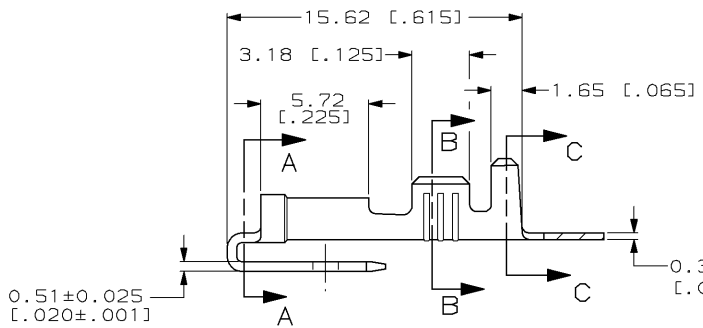
SECTION A-A  
SCALE 10:1



SECTION B-B  
SCALE 10:1



SECTION C-C  
SCALE 10:1



1217084-1  
PART NO

TYPE	WIDTH	STRIP LENGTH	TYPE	WIDTH	HEIGHT	WIRE
INSUL BARREL CRIMP	3.56 [.140]	4.77 [.188]	F	1.78 [.070]	1.40 [.055]	#18
					1.27 [.050]	#20
					1.17 [.046]	#22
					±0.051 ±(.002)	
					±(.015)	

DR 4/22/98 JR RUTH		<b>AMP</b> AMP Incorporated Harrisburg, PA 17105-3608
CHK 4/22/98 P FORTNEY	NAME RECEPTACLE & TAB, FASTON™ PIGGYBACK, 4.75 [.187] SERIES	
APPD 4/22/98 J GILLESPIE	PRODUCT SPEC -	SIZE B
APPD 4/22/98 D BRATINA	APPLICATION SPEC 114-2082	CAGE CODE 00779
FINISH 0.002032 [.000080] MIN TIN	WEIGHT -	DRAWING NO 1217084
		SCALE 5:1
		SHEET 1 OF 1

AMP 1470-15 REV 11-89  
29-JUL-98 13:51:18 amp1369 /home/amp1369/ndmod

CUSTOMER DRAWING