

4

3

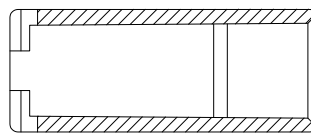
2

1

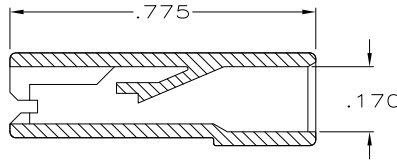
THIS DRAWING IS UNPUBLISHED. RELEASED FOR PUBLICATION  
 © COPYRIGHT - By - ALL RIGHTS RESERVED.

LOC	DIST	REVISIONS			
P	LTR	DESCRIPTION	DATE	DWN	APVD
	V4	REVISED PER ECR-11-007101	08APR11	HMR	PD

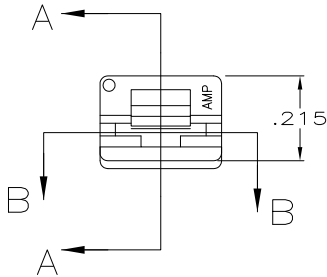
- 1 FOR FOREIGN PRODUCTION ONLY.
- 2 PRELIMINARY - NOT FOR PRODUCTION
- 3 POLYAMIDE, UL 94, V2 ACCORDING TO IEC 60335-1, GLOW WIRE.
- 4 OBSOLETE PARTS: OBSOLETE CIS STREAMLINING PER D.RENAUD/D.SINISI
- 5 ACCEPTS 187 SERIES FASTONS BUDGET AND PREMIER STYLE RECEPTACLES



SECTION B-B  
 ROTATED 90° CW



SECTION A-A



FINISH	MATERIAL	PART NO
1 NATURAL	UL94 5VA RATED	2-480435-0
4 OBSOLETE 1 NATURAL	-	1-480435-5
4 OBSOLETE 1 DYED BLACK	6/6 NYLON	4-480435-4
4 OBSOLETE 1 DYED RED		1-480435-3
1 NATURAL		4-480435-2
1 NATURAL		1-480435-0

THIS DRAWING IS A CONTROLLED DOCUMENT.		DWN	JR RUTH	2/4/91	<b>TE</b> TE Connectivity	
DIMENSIONS: INCHES		CHK	P FORTNEY	2/4/91		
TOLERANCES UNLESS OTHERWISE SPECIFIED:		APVD	R KUZO	2/4/91	NAME	
0 PLC	± -	PRODUCT SPEC		HOUSING, RECEPTACLE, FASTON, .187 SERIES		
1 PLC	± -	APPLICATION SPEC		SIZE	CAGE CODE	DRAWING NO
2 PLC	± -	MATERIAL		A3	00779	C-480435
3 PLC	± .015	FINISH		RESTRICTED TO		
4 PLC	± -	MATERIAL		CUSTOMER DRAWING		
4 ANGLES	± -	MATERIAL		SCALE	4:1	SHEET 1 OF 1
SEE TABLE		SEE TABLE		REV		V4