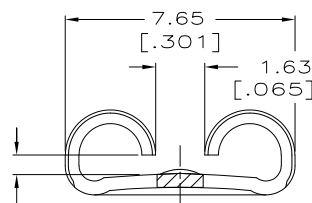
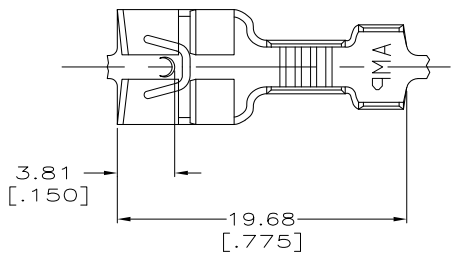


THIS DRAWING IS UNPUBLISHED. RELEASED FOR PUBLICATION
 © COPYRIGHT - By - ALL RIGHTS RESERVED.

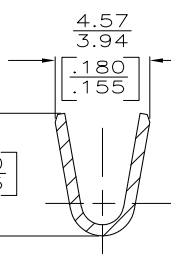
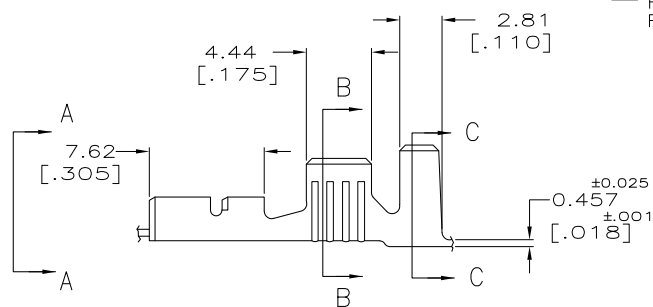
LOC	DIST	REVISIONS					
AF	50	P	LTR	DESCRIPTION	DATE	DWN	APVD
		D		REVISED PER ECR-11-018063	26DEC11	KH	PD



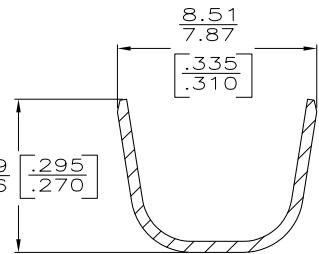
- CONTINUOUS STRIP ON REELS.
- MATING TAB THK TO BE 0.813 ± 0.025 [.032 ± .001]

FITS 6.35 [.250] SERIES FASTON TAB

VIEW A-A
SCALE 8:1



SECTION B-B
SCALE 6:1



SECTION C-C
SCALE 6:1

5.72-6.95 OR (2) 3.56 MAX [.225-.275 OR (2).140 MAX]	2-5mm ² OR (2) 5mm ² [14-10 OR 2#14]	-	63539-2
INSULATION RANGE	WIRE SIZE	FINISH	PART NO
		TIN	63539-1

F	7.87 [.310]	5.59 [.220]	F	3.56 [.140]	1.930 [.076]	2.0mm [14]
					2.235 [.088]	3.0mm [12]
					2.692 [.106]	5.0mm [10]
TYPE	WIDTH	STRIP LENGTH ±0.38 [±.015]	TYPE	WIDTH	±0.51 [±.002] HEIGHT	WIRE
INSUL BARREL CRIMP			WIRE BARREL CRIMP			

THIS DRAWING IS A CONTROLLED DOCUMENT.

DIMENSIONS: mm [INCHES]	TOLERANCES UNLESS OTHERWISE SPECIFIED:
0 PLC ± -	1 PLC ± -
2 PLC ± -	3 PLC ± 0.25 [.010]
4 PLC ± -	ANGLES ± -
MATERIAL TEMPER 4M BRASS	FINISH SEE TABLE

DWN JR RUTH 7/31/89	CHK MS FEHER 7/31/89	APVD C MEYERS 7/31/89	NAME
STE			TE Connectivity
RECEPTACLE, FASTON, .250 SERIES			
SIZE A3	CAGE CODE 00779	DRAWING NO C=63539	RESTRICTED TO
CUSTOMER DRAWING			SCALE 4:1 SHEET 1 of 1 REV D