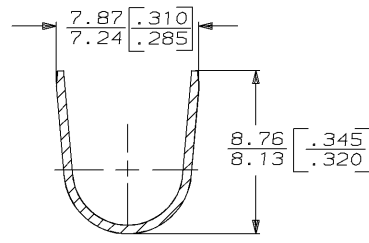
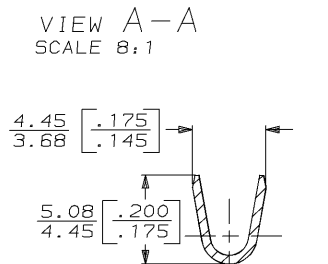
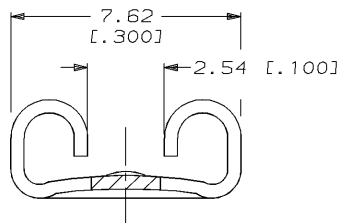
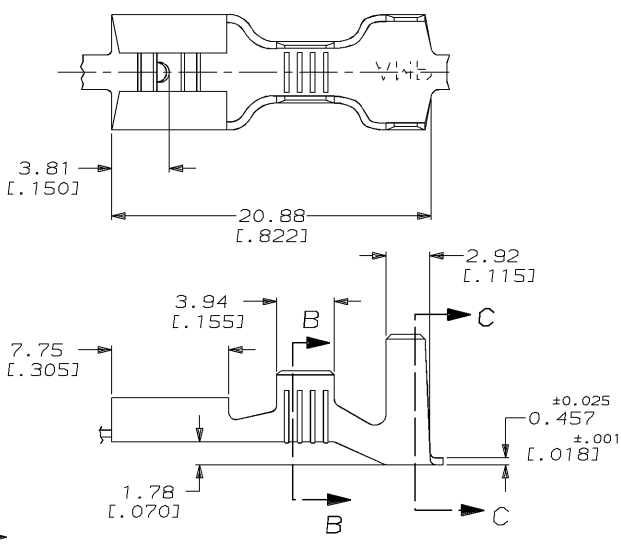


THIS DRAWING IS UNPUBLISHED. RELEASED FOR PUBLICATION, 19 .  
 © COPYRIGHT 19 BY AMP INCORPORATED. ALL INTERNATIONAL RIGHTS RESERVED.

LOC	DIST	REVISIONS				
P	F	ZONE	LTR	DESCRIPTION	DATE	APPD
AF	50		A	REL -1 PER 0710-0228-95	5/30/95	JR/PD

1 CONTINUOUS STRIP ON REELS



5.33-6.73 or (2) 3.05 [.210-.265] or (2) [.120]	[16-12] or (2) [#18's]	0.813±0.025 [.032±.001]	63831-1
INSULATION RANGE	WIRE SIZE	MATING TAB THICKNESS	PART NO

F	7.62 [.300]	6.4 [.252]	F	3.56 [.140]	2.413 [.095] [12] 2.083 [.082] [14] 1.880 [.074] [16]	DO NOT SCALE PRINT. UNLESS SPECIFIED DIMENSIONS IN mm [INCHES] TOLERANCES ON: 2 PLC DEC ± 0.25 (.010) 3 PLC DEC ± - ANGLES ± -
TYPE	WIDTH	STRIP LENGTH ±0.38 ± [.015]	TYPE	WIDTH	±.051 [.002] HEIGHT	WIRE
INSUL BARREL CRIMP			WIRE BARREL CRIMP			

DR 3/1/95 JR RUTH	AMP INCORPORATED Harrisburg, Pa. 17105
CHK 3/1/95 NS FEHER	
APPD 3/1/95 J REYER	
APPD 3/1/95 R REINER	
PRODUCT SPEC	NAME
FINISH	RECEPTACLE, FASTON™ 6.35 [.250] SERIES
APPLICATION SPEC 114-2036	SIZE
WEIGHT	B 00779
	CAGE CODE
	00779
	DRAWING NO
	63831
	SCALE
	4:1
	SHEET
	1 OF 1

AMP 1470-15 REV 6-89 30-MAY-95 14:22:04 amp13469 /ws/dept2121/dwg2121/u.faston-prem/u.250-str

CUSTOMER DRAWING