

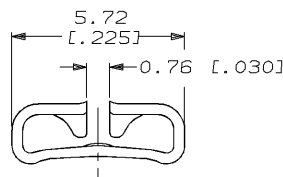
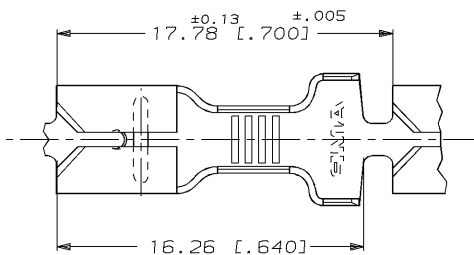
DRAWING MADE IN THIRD ANGLE PROJECTION

THIS DRAWING IS UNPUBLISHED. RELEASED FOR PUBLICATION, 19 .

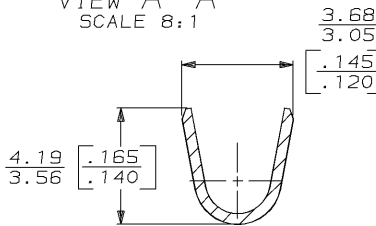
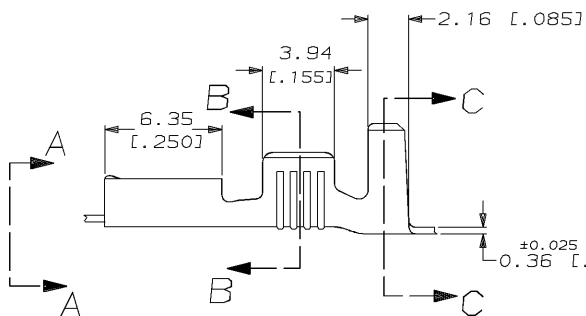
© COPYRIGHT 19 BY AMP INCORPORATED. ALL INTERNATIONAL RIGHTS RESERVED.

| LOC | DIST | P | F | ZONE | LTR | DESCRIPTION          | DATE    | APPD  |
|-----|------|---|---|------|-----|----------------------|---------|-------|
| AF  | 50   |   |   |      | C   | REV PER 0710-0104-96 | 3/20/96 | JR/PD |

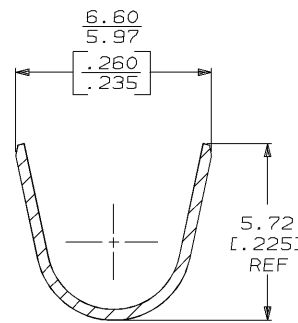
1 CONTINUOUS STRIP ON REELS.



VIEW A-A  
SCALE 8:1



SECTION B-B  
SCALE 8:1



SECTION C-C  
SCALE 8:1

|   |  |   |                    |
|---|--|---|--------------------|
| 3.81-4.83 DIA<br>[.150-.190] DIA  | 0.8-2.0mm <sup>2</sup><br>[#18-14] AWG   | 0.81<br>[.032]  | 63697-1            |
| INSUL RANGE   | WIRE SIZE  | MATING TAB<br>THK±0.025 [0.001]   | PART NO            |
| DO NOT SCALE PRINT.<br>UNLESS SPECIFIED<br>DIMENSIONS ARE IN INCHES<br>TOLERANCES ON:<br>1. PLC DEC ± 0.25 (.010)<br>2. PLC DEC ± -<br>ANGLES ± - | DR 2/19/93<br>JR RUTH<br>CHK 2/19/93<br>NS FEHER<br>APPD 2/19/93<br>C MEYERS<br>APPD 2/19/93<br>R KUZO<br>PRODUCT SPEC - | <b>AMP</b> AMP INCORPORATED<br>Harrisburg, Pa. 17105<br><br>NAME<br><b>RECEPTACLE, FASTON™</b><br><b>4.75 [.187] SERIES</b> |                    |
| MATERIAL<br>H04 BRASS   | FINISH<br>PRE-TIN  | SIZE<br><b>B</b>  | CAGE CODE<br>00779 |
|   | APPLICATION SPEC<br>114-2036   | DRAWING NO<br>63697   | SHEET<br>1 OF 1    |
|   | WEIGHT -   | SCALE<br>5:1  |                    |

AMP 1470-15 REV 6-89  
20-MAR-96 11:34:17 amp13469 /ws/dept2121/dwg2121/u.faston-ceb/u.187-str

CUSTOMER DRAWING