

4

3

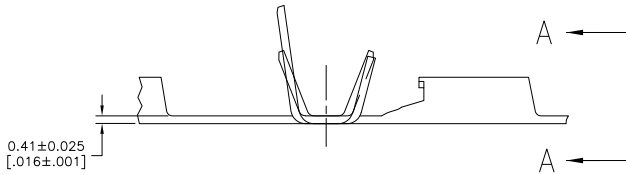
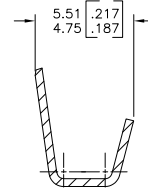
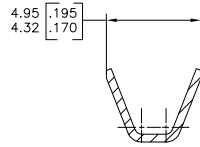
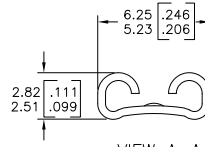
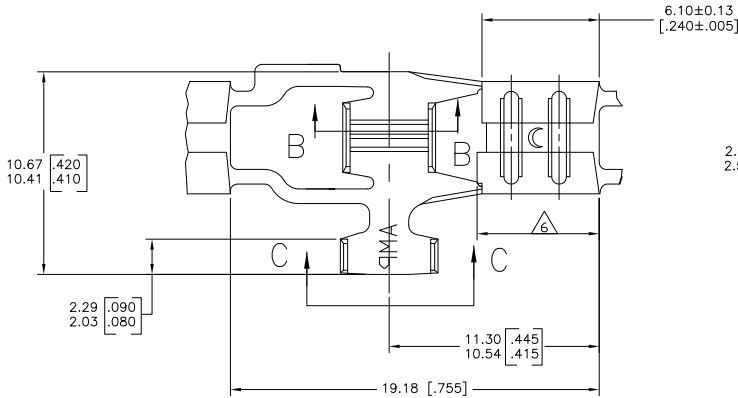
2

1

THIS DRAWING IS UNPUBLISHED. RELEASED FOR PUBLICATION. BY TYCO ELECTRONICS CORPORATION. ALL INTERNATIONAL RIGHTS RESERVED.

LOC	DIST	REVISIONS			
F	LR	DESCRIPTION	DATE	BY	APP'D
AF	50	REVISED PER ECR-10-008915	12MAY10	JR	PD

- 1 CONTINUOUS STRIP ON REELS.
 - 2 MATING TAB THK TO BE 0.81±0.025 [0.032±.001]
 - 3 WIRE SIZE IS #18-#14 AWG.
 - 4 INSULATION RANGE IS 1.52-3.81 [0.060-.150] DIA.
- ⚠ REEL WITH INTERLEAVING PAPER
 ⚠ RECEPTACLE LENGTH CAN BE GREATER BY UP TO 0.25 [0.010] MAX FROM OPPOSITE SIDE.
 PREPRODUCTION - FASR REQUIRED



PART NO	WIRE		INSULATION DIAMETER (MM)	WIRE BARREL CRIMP			TENSILE STRENGTH POUNDS	
	QTY	SIZE AWG		WIDTH	CRIMP HEIGHT	CRIMPER		ANVIL
63316	1	14	.150	.120	.071	F	FLAT	50
	1	16		.063	30			
	1	18		.057	20			

⚠ REVERSE REELED	0.00398 [0.000157] MIN SILVER	H04 PHOS BRZ	⚠ 63316-6
	0.002032 [0.000080] MIN TIN	H04 BRASS	63316-5
	0.00381 [0.000150] MIN NICKEL	T2 CR STEEL	63316-3
	0.002032 [0.000080] MIN TIN	H04 BRASS	63316-2
		H04 BRASS	63316-1
	FINISH	MATERIAL	PART NO.

THIS DRAWING IS A CONTROLLED DOCUMENT.

DRW: JR. RUTH	DATE: 6/16/97	Tyco Electronics Corporation Harrisburg, PA 17105-3608
CHK: J.C. FEUER	DATE: 6/16/97	
APP: C. MEYERS	DATE: 6/16/97	RECEPTACLE, FLAG, FASTON, 4.75 [0.187] SERIES
PRODUCT SPEC: ---	APPLICATION SPEC: ---	SIZE: 000779
MATERIAL: SEE TABLE	FINISH: SEE TABLE	CUSTOMER DRAWING
RESTRICTED TO: ---	SCALE: 4:1	SHEET: 1 of 1
		REV: R6