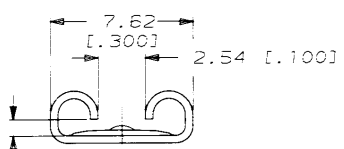
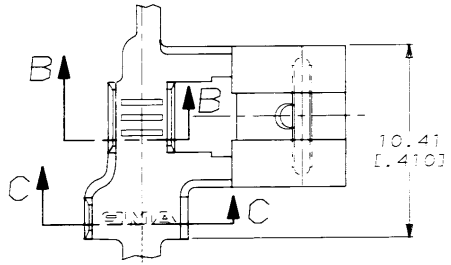


DRAWING MADE IN THIRD ANGLE PROJECTION

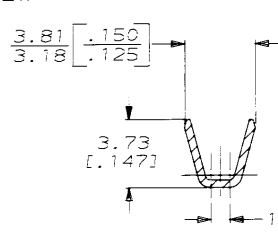
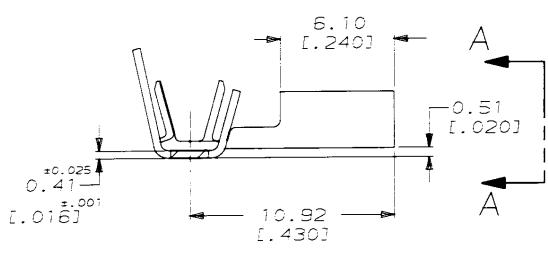
THIS DRAWING IS UNPUBLISHED. RELEASED FOR PUBLICATION. BY AMP INCORPORATED. ALL INTERNATIONAL RIGHTS RESERVED.

LOC	DIST	REVISIONS				DATE	APPD
AF	50	P	F	ZONE	DESCRIPTION		
				F	REVISED AF-7659	10/17/91	JR

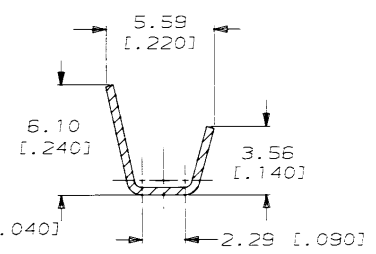


FITS 6.35 [0.250] SERIES FASTON TAB

VIEW A-A



SECTION B-B



SECTION C-C

1 CONTINUOUS STRIP ON REELS.

TIN	2.79-4.06	0.8-2.0mm <sup>2</sup>	0.81	63010-2
	[0.110-0.160] DIA	[18-14] AWG	[0.032]	63010-1
FINISH	INSUL RANGE	WIRE SIZE	MATING TAB THK ±0.025 [0.001]	PART NO
DO NOT SCALE PRINT. UNLESS SPECIFIED DIMENSIONS IN INCHES! TOLERANCES ON:	DR 4/8/91 JR RUT	<b>AMP</b> AMP Incorporated Harrisburg, PA 17105-3608 NAME RECEPTACLE, FASTON, FLAG, 6.35 [0.250] SERIES SIZE CASE CODE DRAWING NO B 00779 63010 SCALE 5:1 SHEET 1 OF 1		
±0.001	CHK 4/8/91 MS FISER			
±0.005	APPD 4/8/91 C MEYERS			
±0.015	PRODUCT SPEC			
MATERIAL	4M BRASS	APPLICATION SPEC		
FINISH	SEE TABLE	WEIGHT		

**METRIC**

AMP 1470-15 REV 11-85  
17 001 186 15 11 85 AMP 13465 457284 DEPT 22106021214 FASTON-GER-250-F

CUSTOMER DRAWING