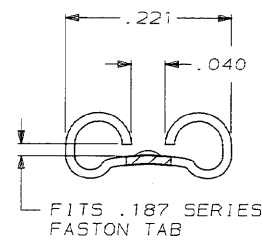
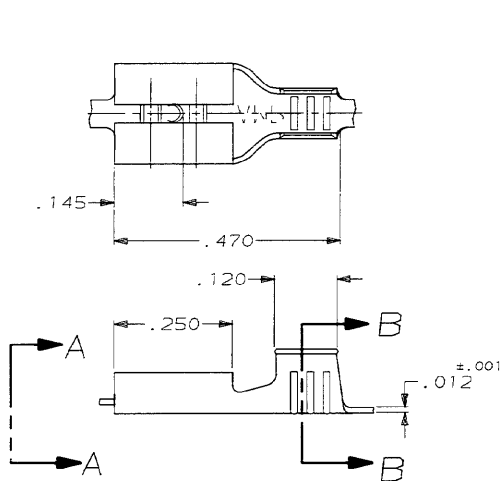


DRAWING MADE IN THIRD ANGLE PROJECTION

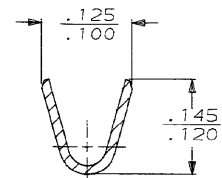
THIS DRAWING IS UNPUBLISHED. RELEASED FOR PUBLICATION  
© COPYRIGHT 19 BY AMP INCORPORATED. ALL INTERNATIONAL RIGHTS RESERVED.

LOC	DIST	P	F	ZONE	LTR	REVISIONS		DATE	APPD
						DESCRIPTION			
AF	50				K	REDRAWN		7/14/89	JR/CH



VIEW A-A  
SCALE 8:1

1 CONTINUOUS STRIP ON REELS



SECTION B-B  
SCALE 8:1

OBSELETE

STRIP LENGTH ±.015	TYPE	WIDTH	±.002 HEIGHT	WIRE
.188	F	.090	.060 16	
			.053 18	
			.049 20	
WIRE BARREL CRIMP				

NICKEL	#2H STEEL	20-16	.020	42373-3
TIN	#4H BRASS	20-16	.020	42373-2
-	#4H BRASS	20-16	.020	<del>42373-1</del>
FINISH	MATERIAL	WIRE SIZE	MATING TAB THK ±.001	PART NO
DO NOT SCALE PRINT. UNLESS SPECIFIED DIMENSIONS IN mm (INCHES) TOLERANCES ON: 2 PLG DEC ± .015 3 PLG DEC ± .015 ANGLES ± °				
AMP INCORPORATED Harrisburg, Pa. 17105				
RECEPTACLE, FASTON™ .187 SERIES				
NAME				
SIZE CASE CODE DRAWING NO				
B 00779 42373				
SCALE 5:1 SHEET 1 OF 1				

AMP 1470-15 REV 6-89

14 JUL 1989 06:24:15 013460 -051264-DEPT2124-DWG212440 FASTON-REKJW 187-STR

CUSTOMER DRAWING